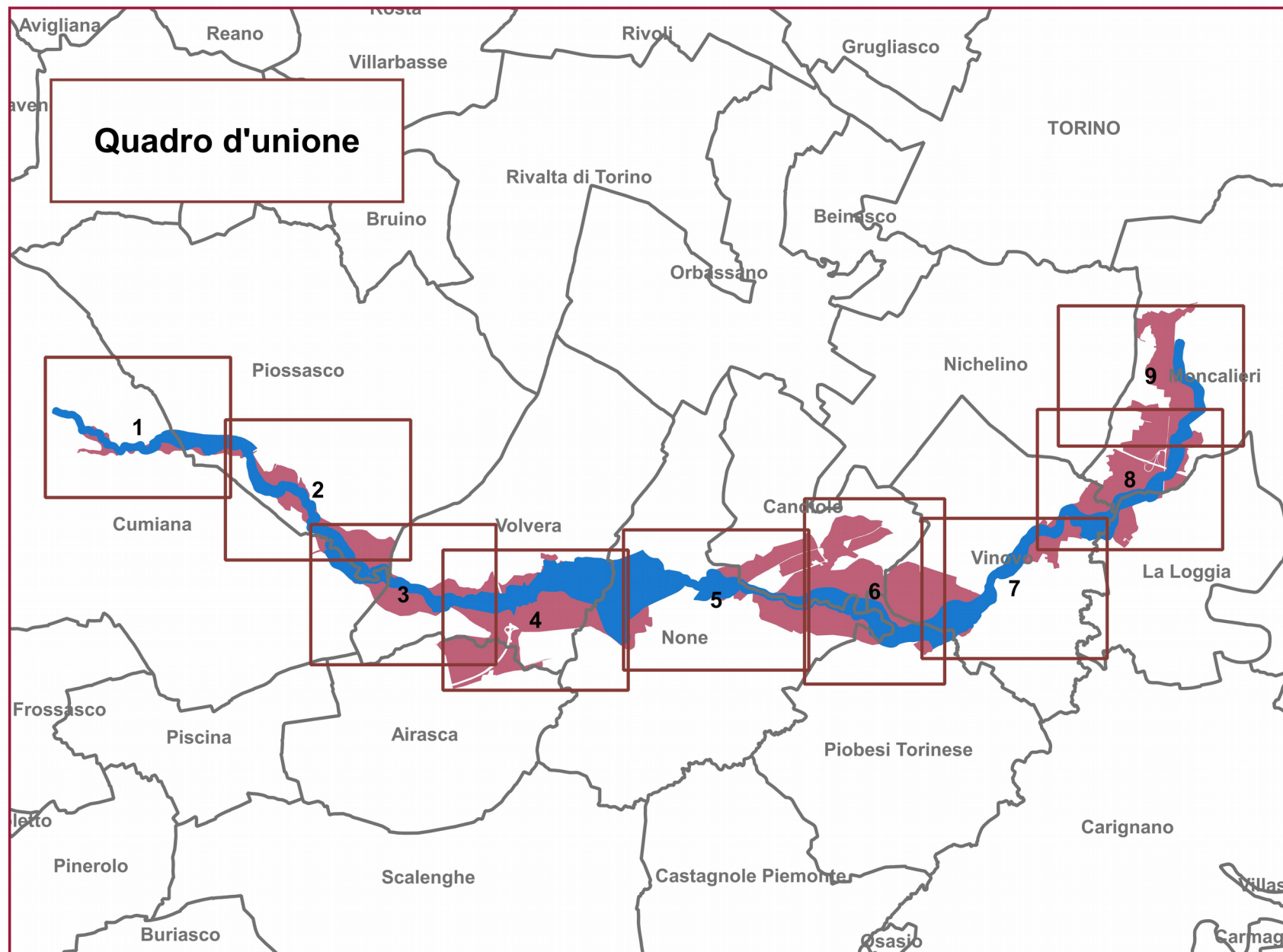


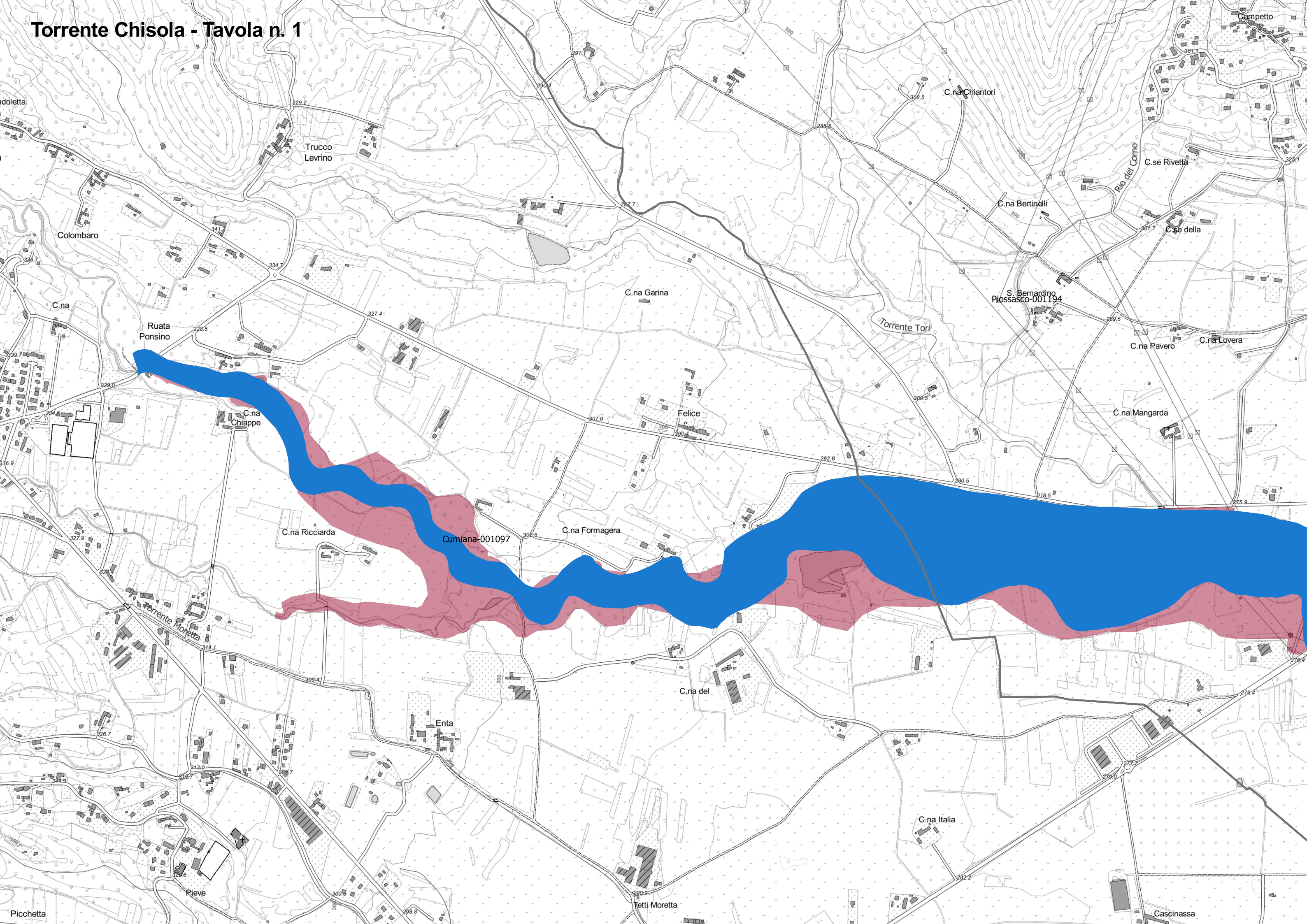
**Torrente Chisola - Confronto tra gli scenari di piena 'M' del
PGRA e gli ampliamenti proposti a seguito dell'evento del 2016**

Legenda

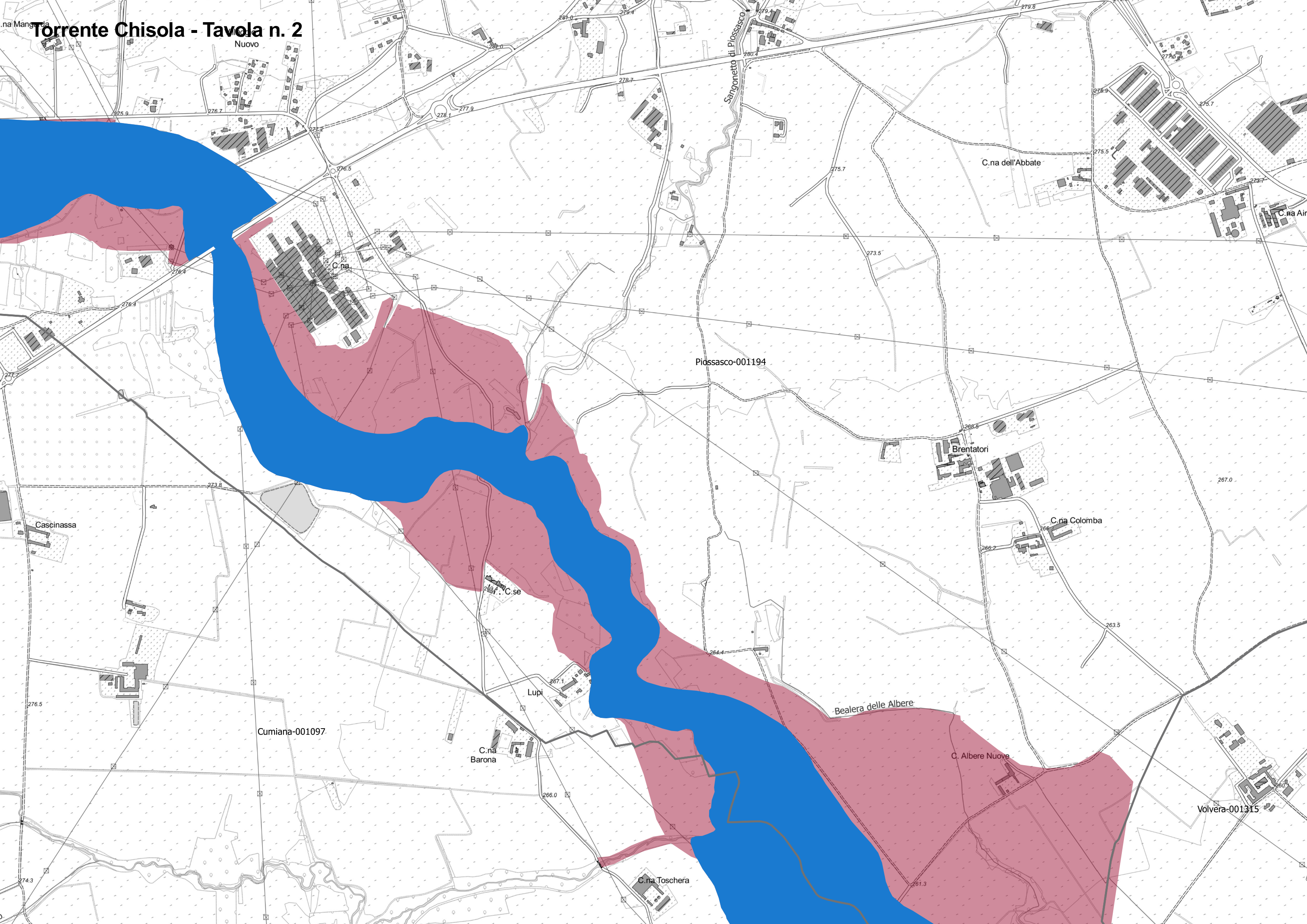
- Scenario 'M' delle mappe di pericolosità del PGRA
- Ampliamenti dello scenario 'M' in seguito all'evento del 2016



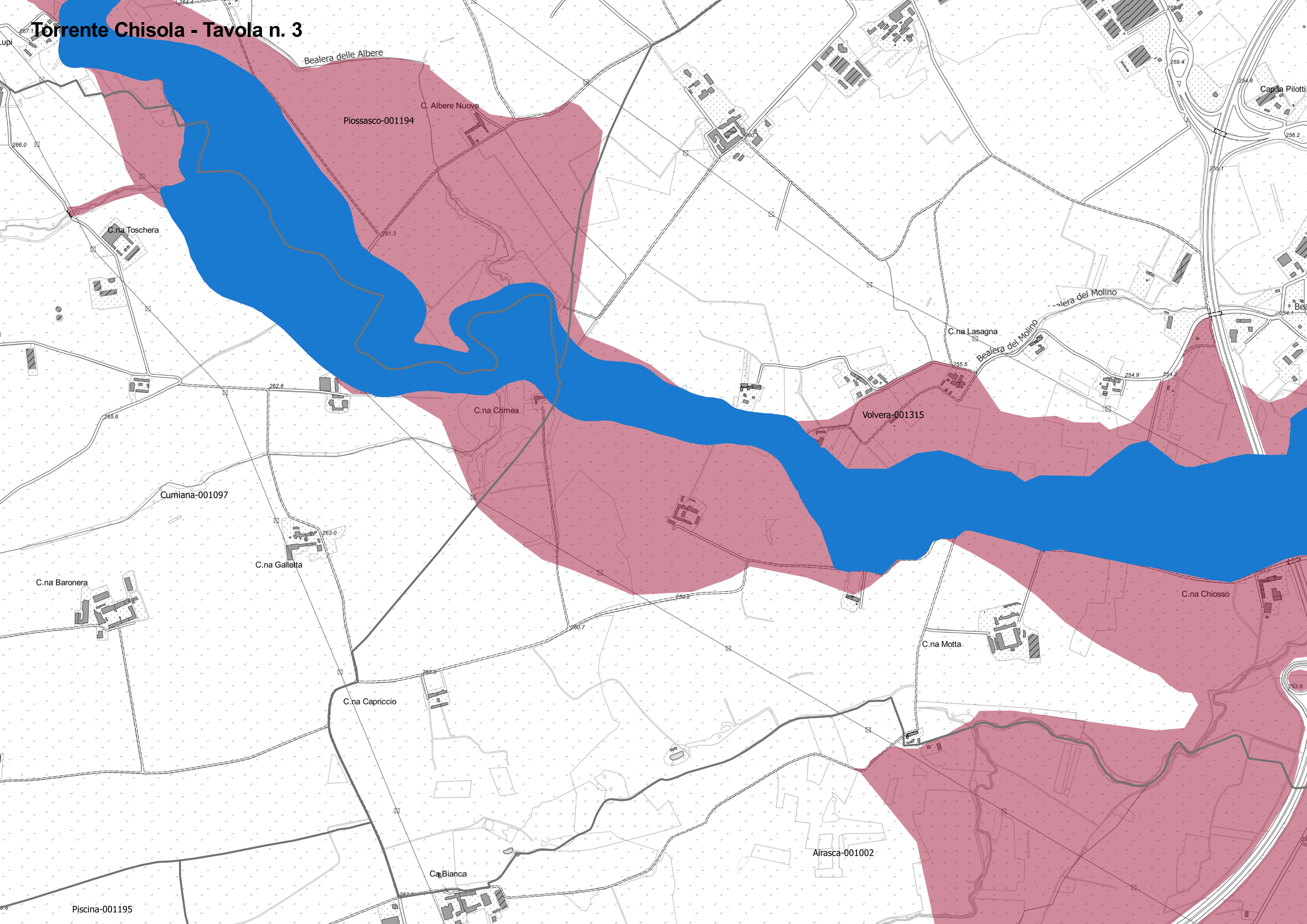
Torrente Chisola - Tavola n. 1



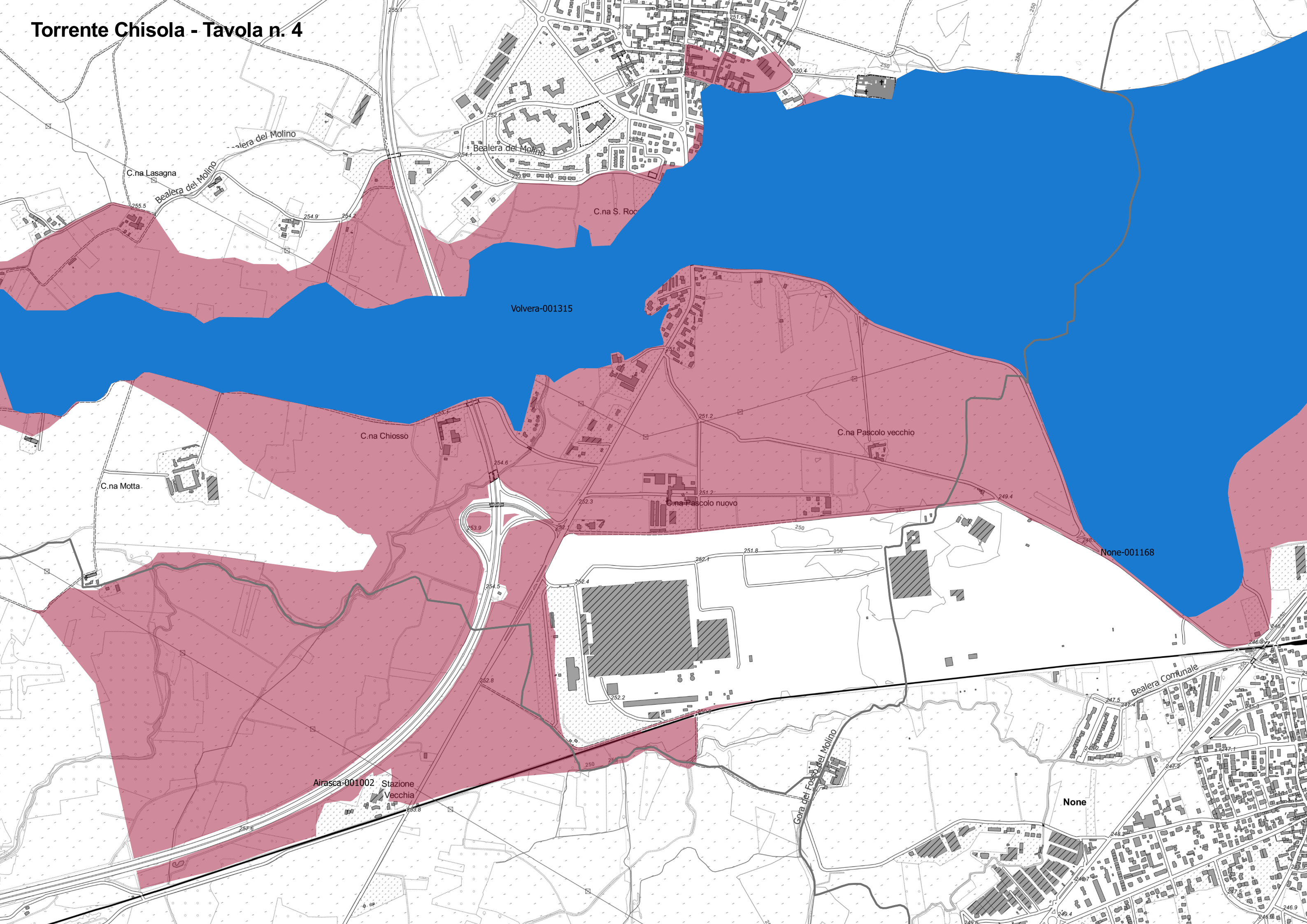
Torrente Chisola - Tavola n. 2



Torrente Chisola - Tavola n. 3

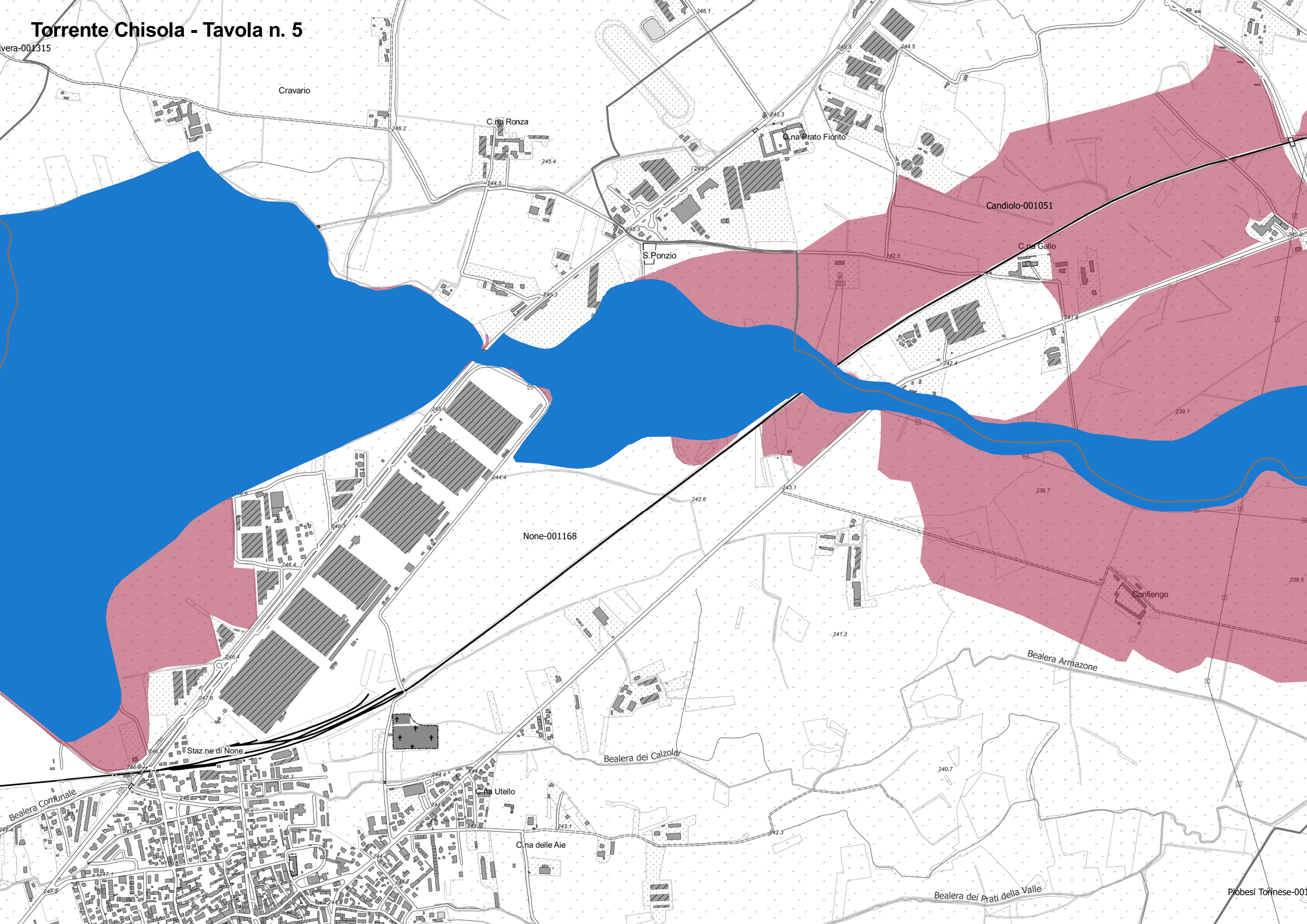


Torrente Chisola - Tavola n. 4



Torrente Chisola - Tavola n. 5

vera-001315



Cravario

C. na Ronza

C. na Prato Fiorito

S. Ponzio

Candiolo-001051

C. na Gallo

None-001168

Confiengo

Staz. ne di None

Bealera dei Calzolari

C. na Utello

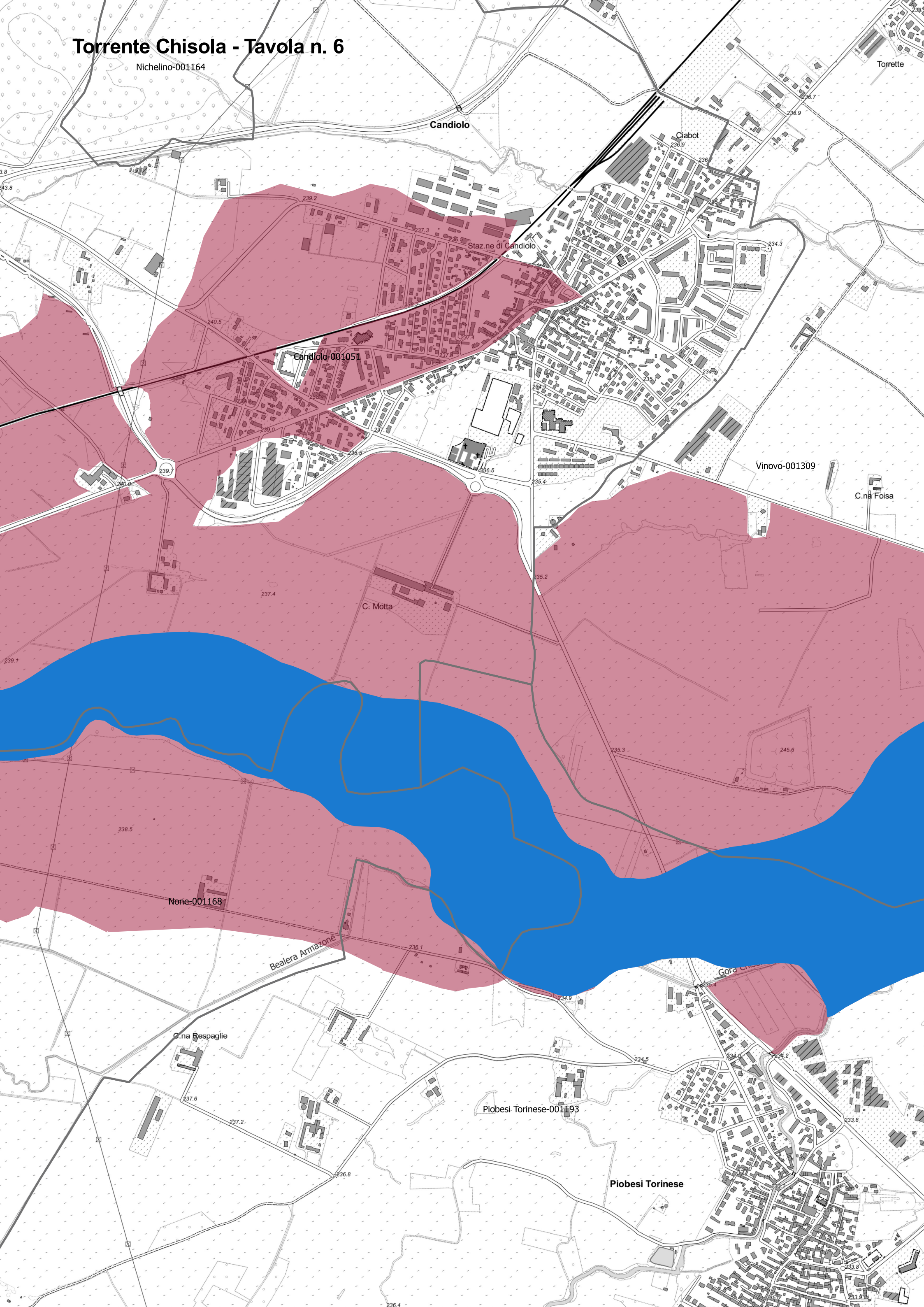
C. na delle Aie

Bealera dei Prati della Valle

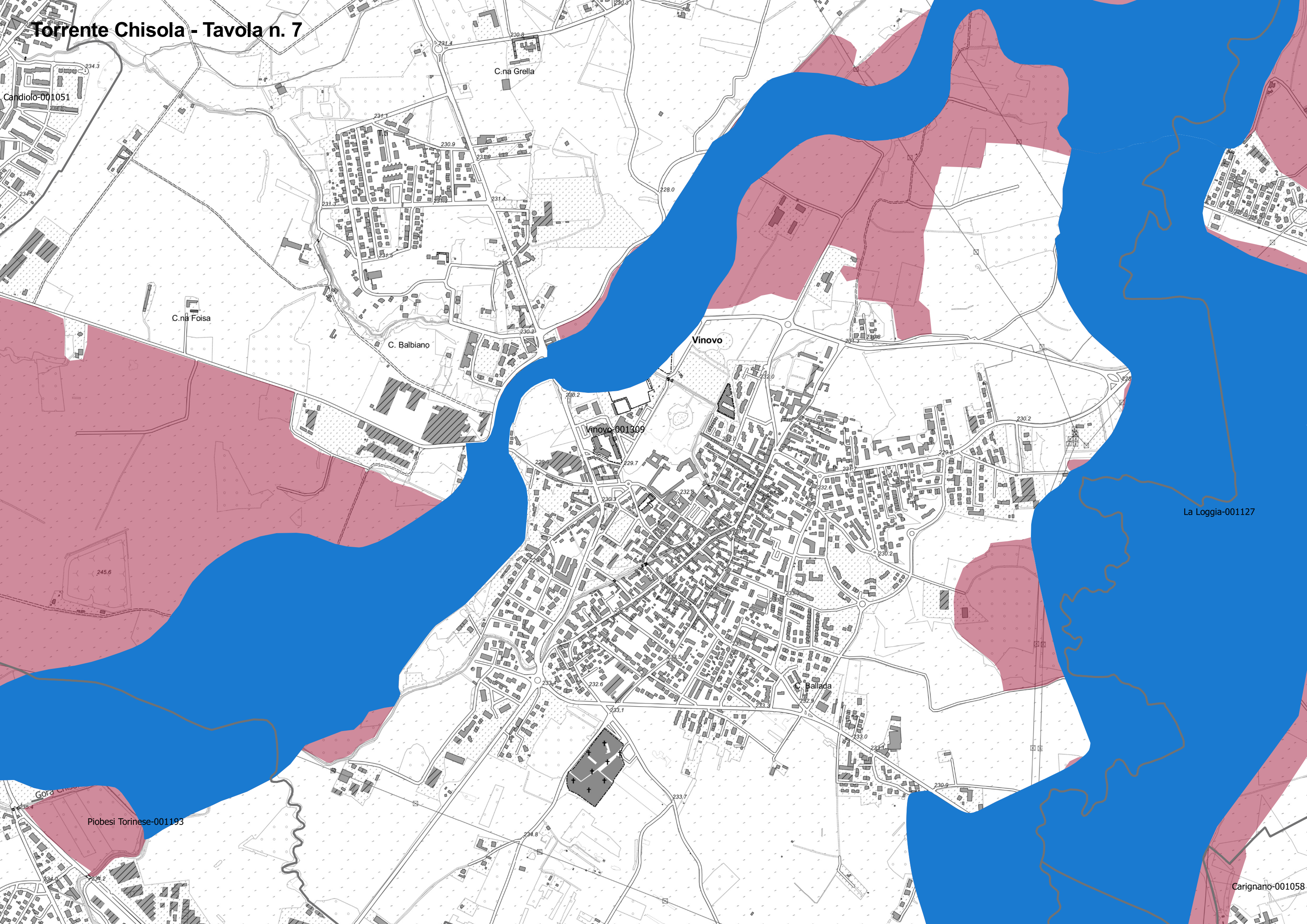
Piobesi Torinese-001

Torrente Chisola - Tavola n. 6

Nichelino-001164



Torrente Chisola - Tavola n. 7



Candiolo-001051

C.nà Grella

C.nà Folsa

C. Balbiano

Vinovo

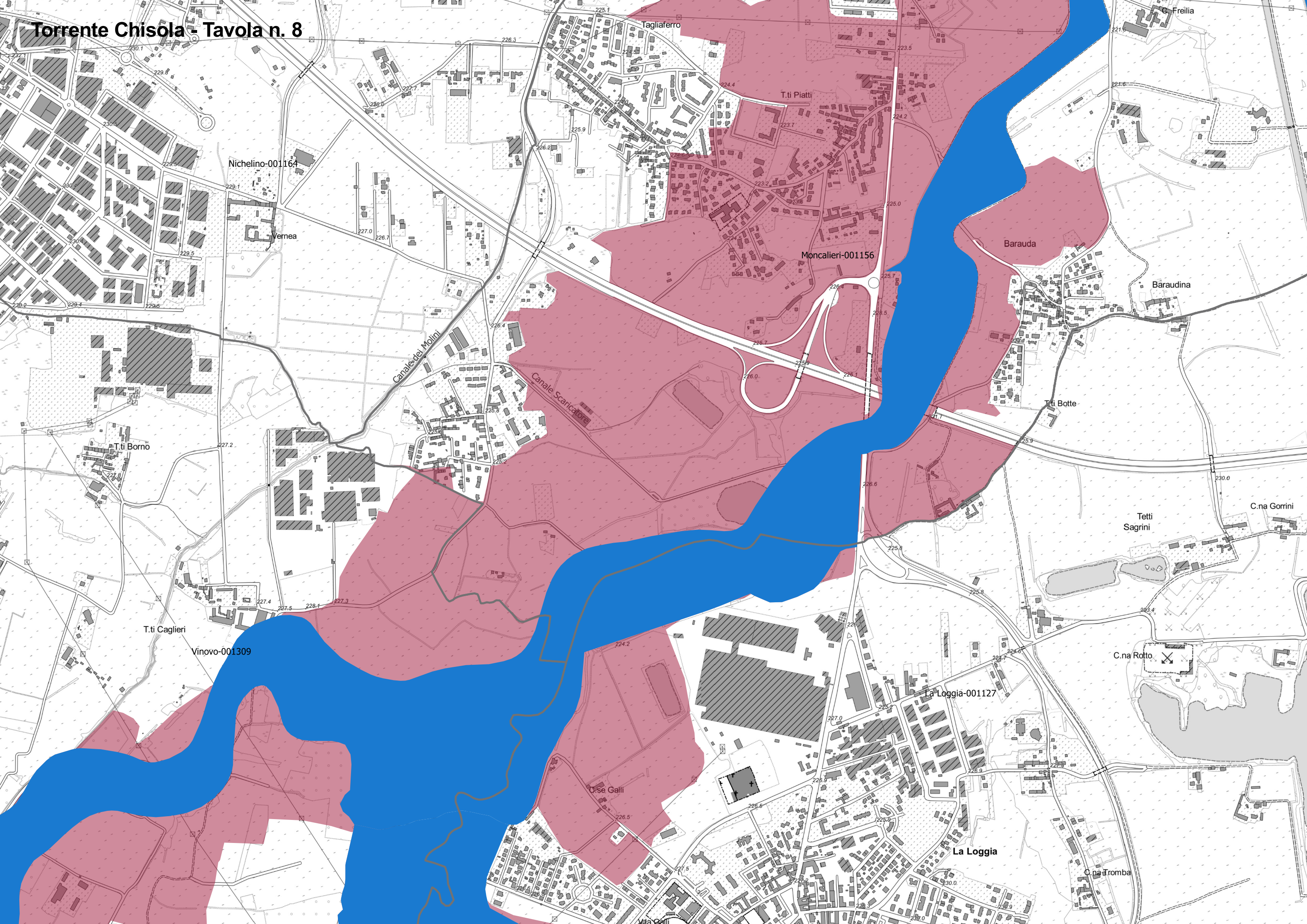
Vinovo-001309

La Loggia-001127

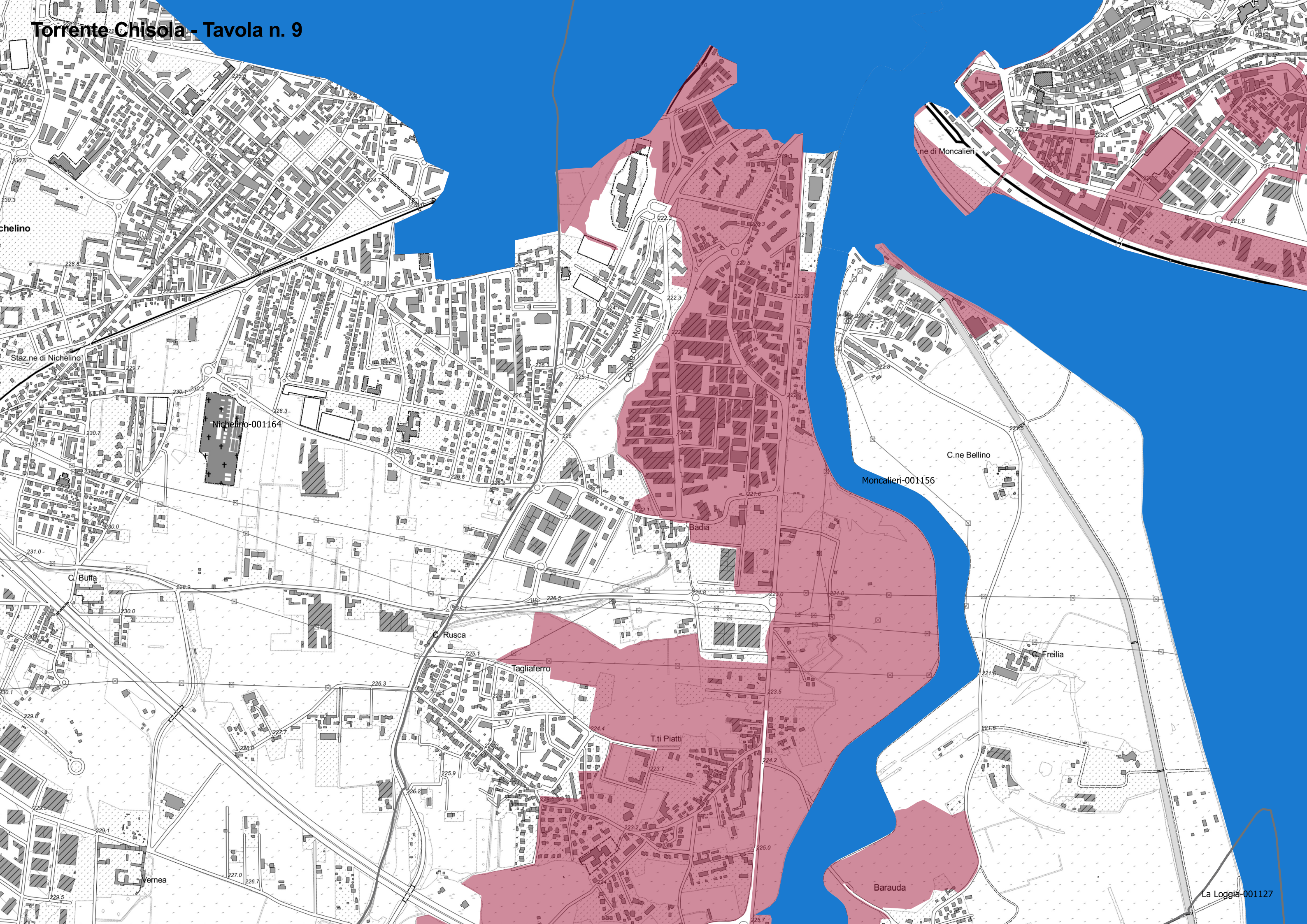
Piobesi Torinese-001193

Carignano-001058

Torrente Chisola - Tavola n. 8



Torrente Chisola - Tavola n. 9



Nichelino

Staz. ne di Nichelino

Nichelino-001164

C. Buffa

C. Rusca

Tagliaferro

T. ti Piatti

Vernea

Barauda

La Loggia-001127

ne di Moncalieri

Moncalieri-001156

C. ne Bellino

C. Freilia