

Connessioni

Il fiume Po possibile corridoio ecologico della Pianura padana

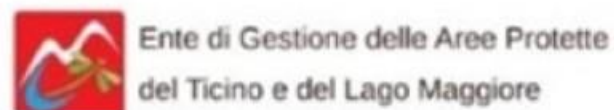
Torino, Palazzo Madama, 16 ottobre 2024

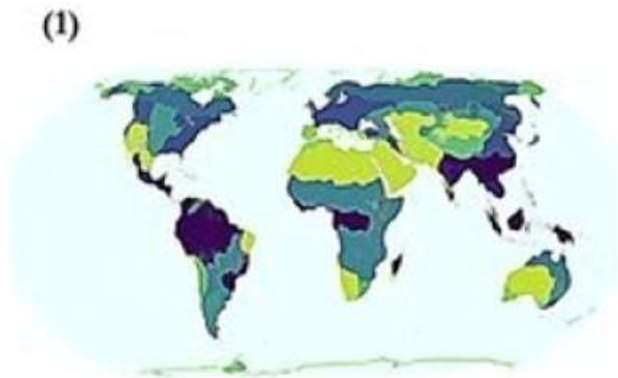
Il Fiume Po come elemento di connessione della Pianura Padana

Giuseppe Bogliani, Università di Pavia

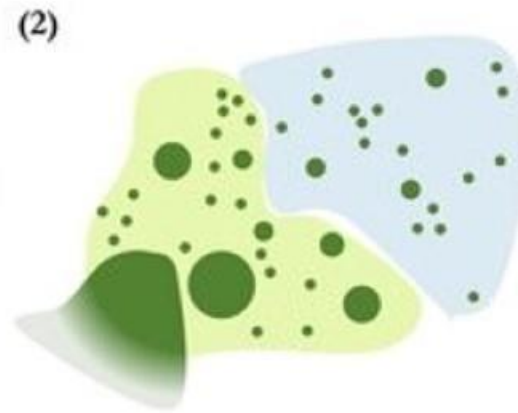


In collaborazione con

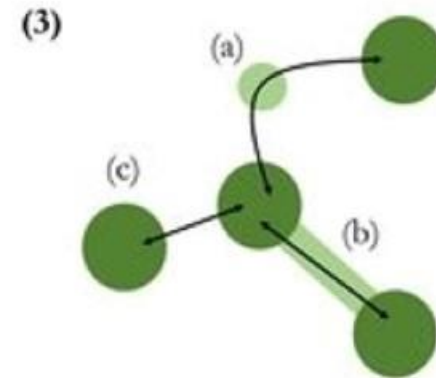




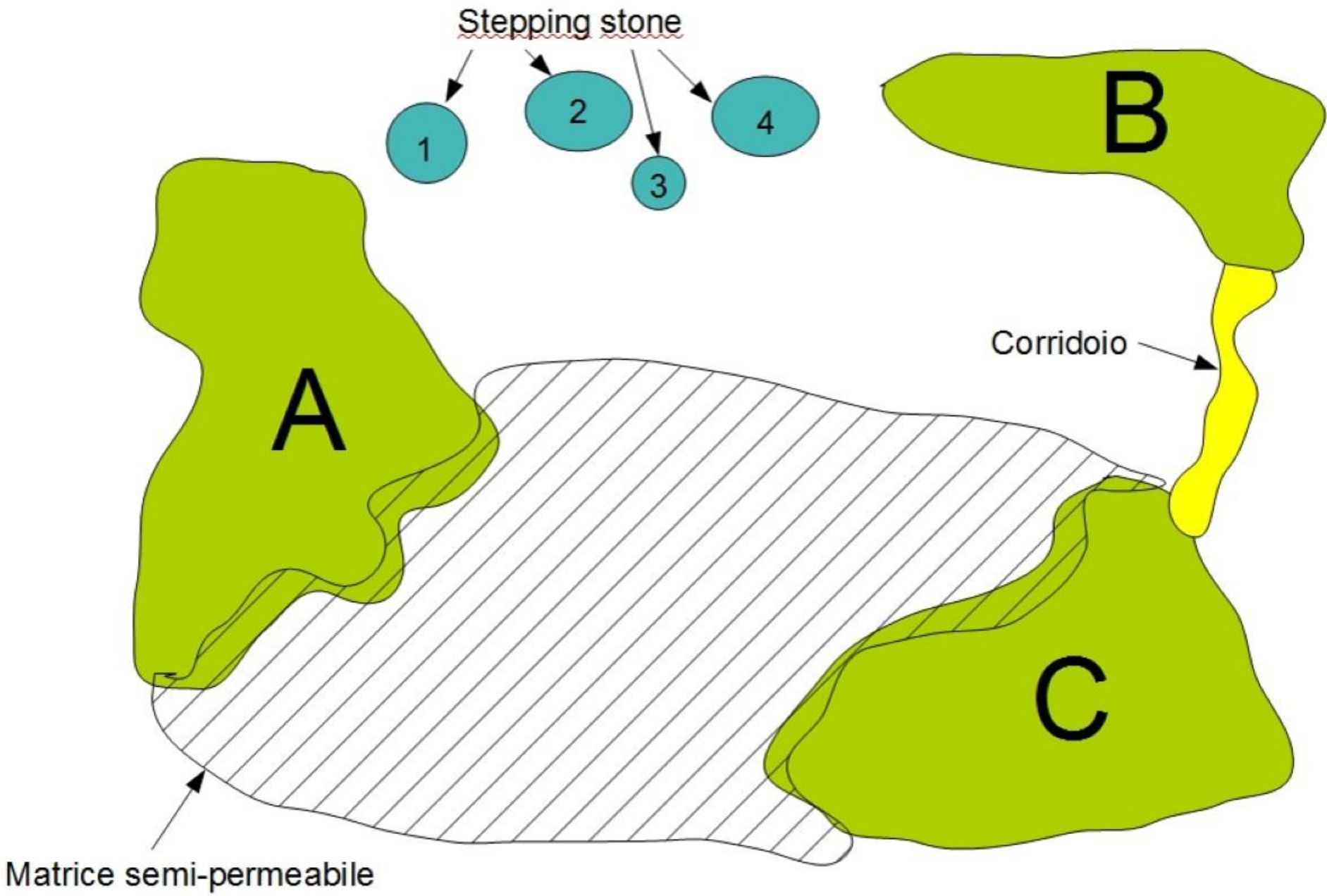
Proteggere gli habitat
in ogni bioma o
ecoregione



Proteggere quanto più
habitat è possibile, in
aree sia grandi sia
piccole



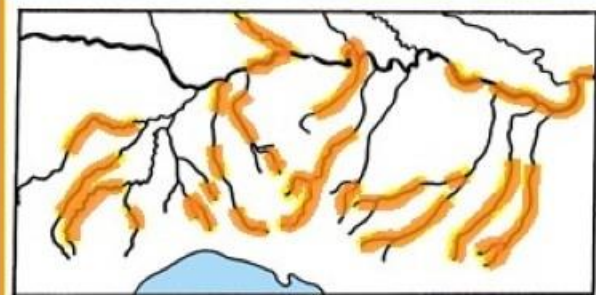
Proteggere gli habitat che
consentono la connettività



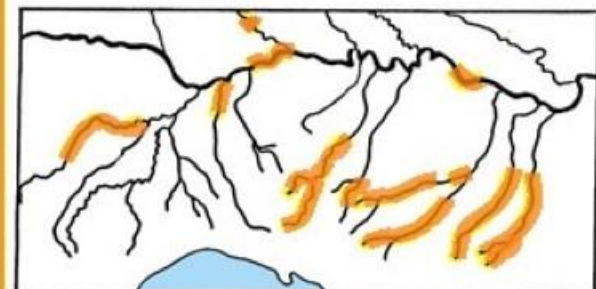
L'estinzione della lontra in Italia settentrionale

Cagnolaro et al. 1971-1973; Panzacchi et al. 1985

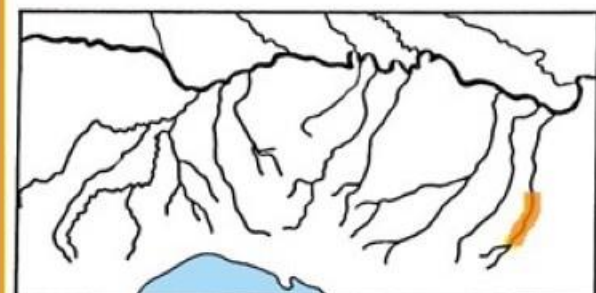




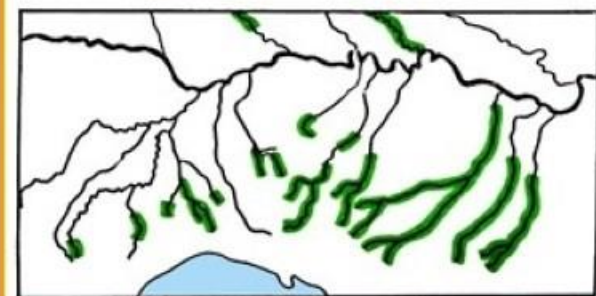
1900 - 1967



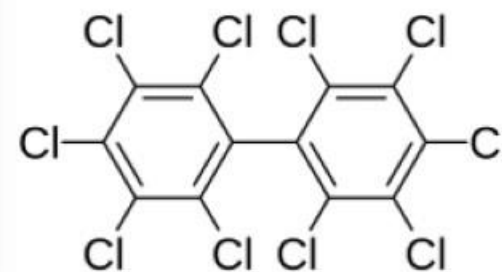
1968 - 1972



1985 - 1987



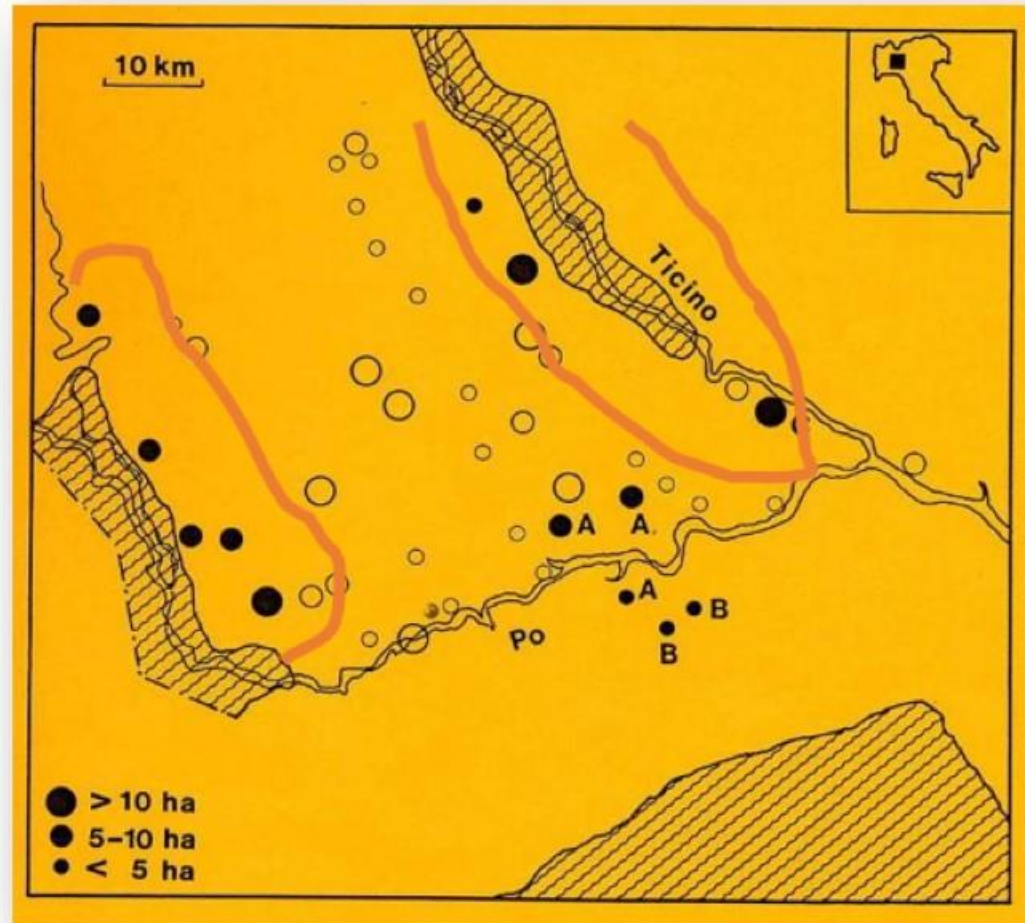
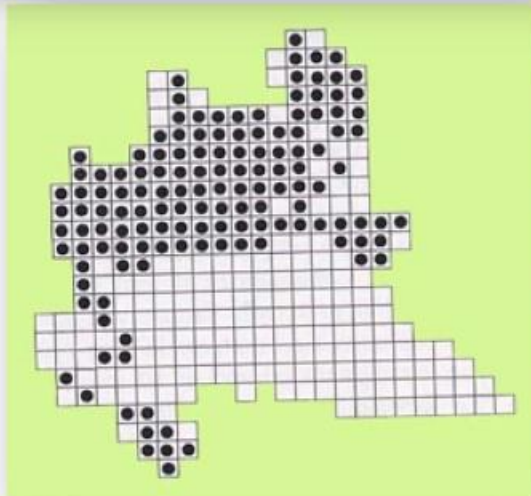
qualità
dell'acqua
e.b.i.

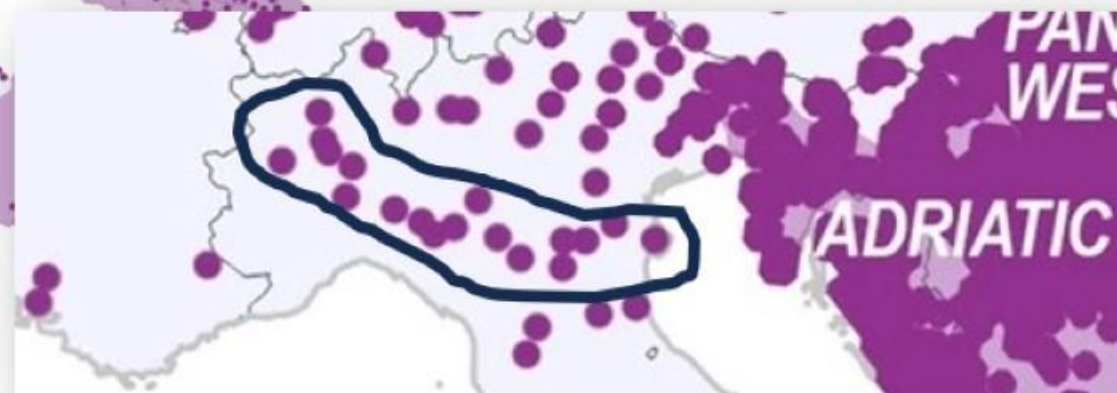
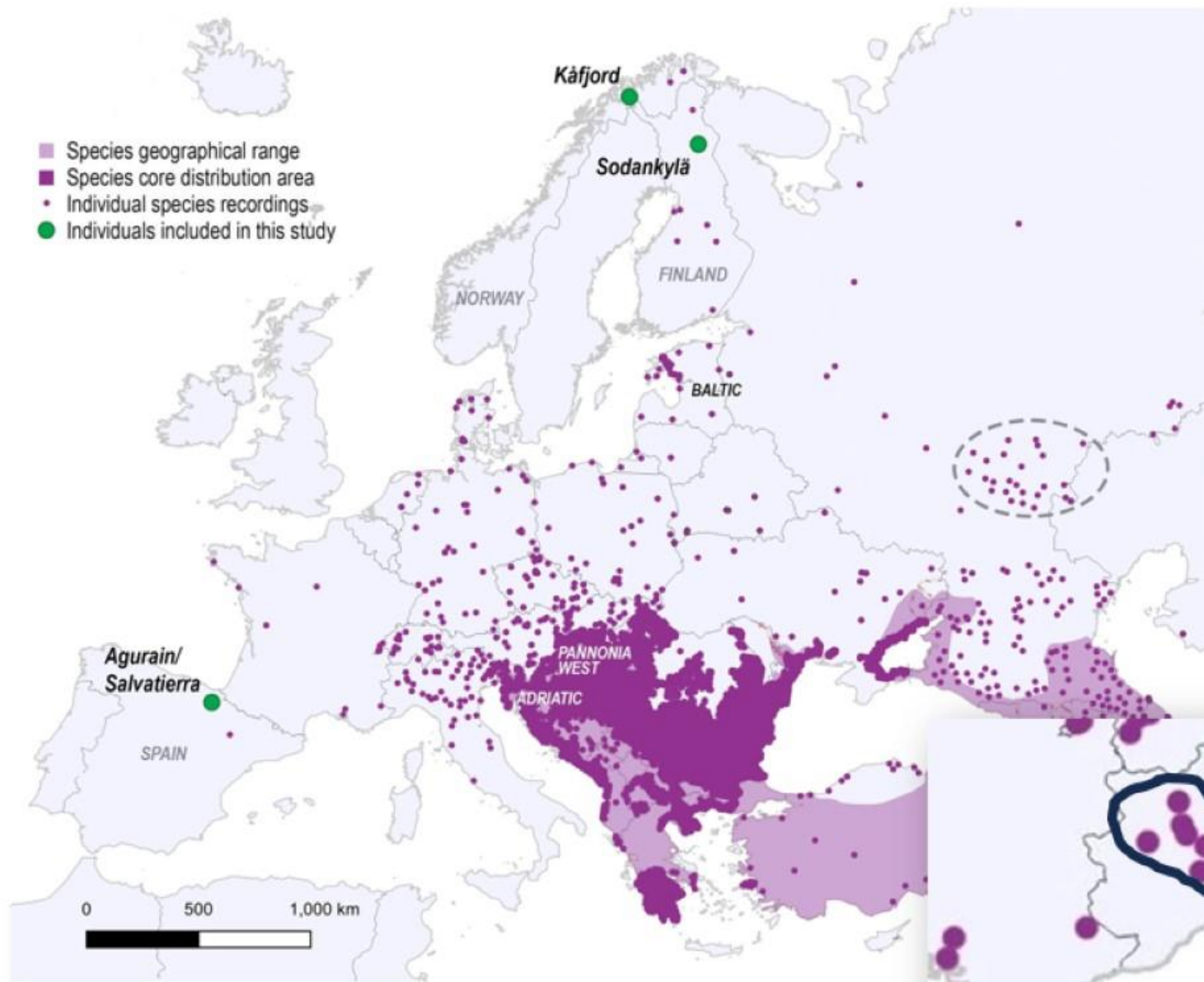




Una fonte per le popolazioni frammentate della pianura:
il caso dello Scoiattolo rosso

Celada et al. 1994















Corvino San Quirico – Oltrepo Pavese



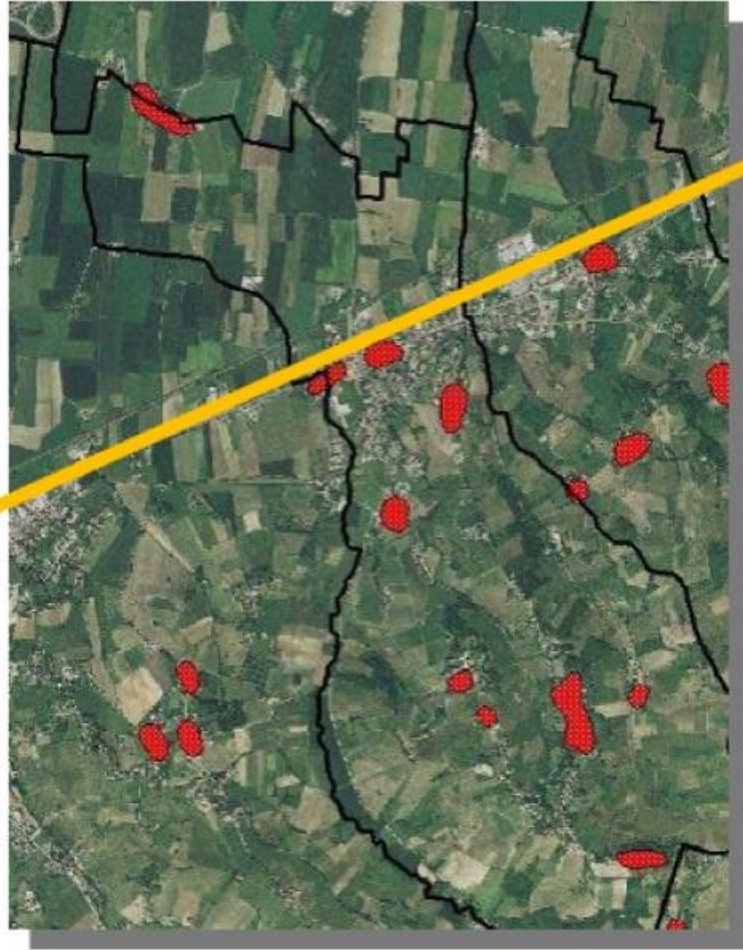
Esempi di consumo del suolo e di frammentazione della matrice agricola

Da Legambiente Pavia – Arch. Renato Bertoglio

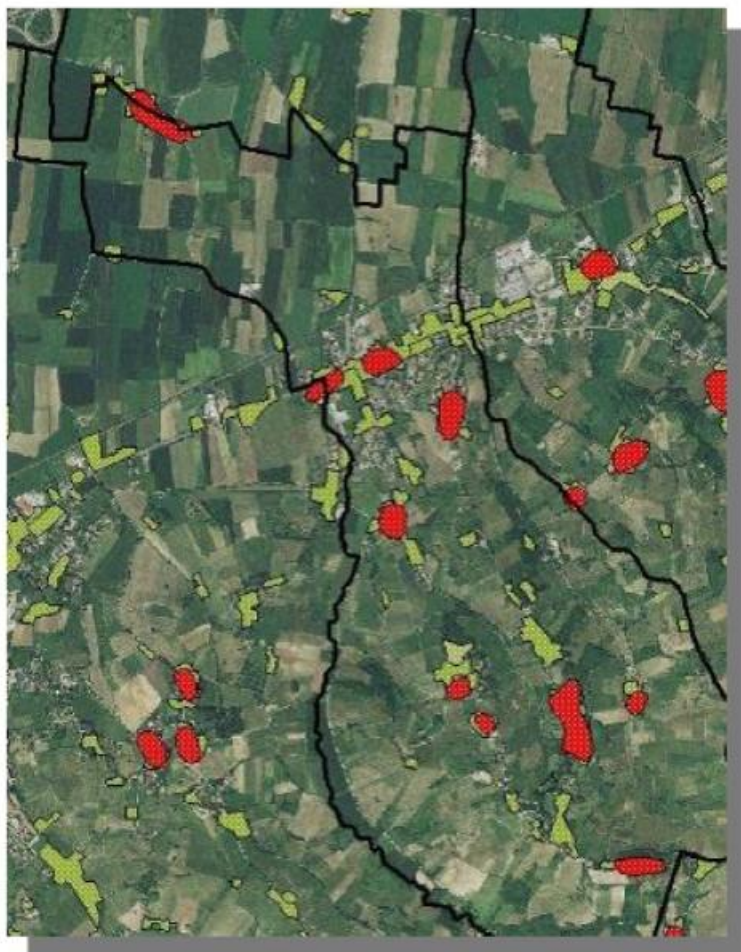
Il comune di Corvino San Quirico in provincia di Pavia

| | | |
|------------------------------------|--|--|
| immagine 1: il retino rosso |  | indica le dimensioni al 1890 |
| immagine 2: il retino giallo-verde |  | indica le dimensioni al 1954 |
| immagine 3: il retino azzurro |  | indica le dimensioni al 1980 |
| immagine 4: il retino lilla |  | indica le dimensioni al 1999 |
| immagine 5: il retino marrone |  | indica le dimensioni al 2012 |
| immagine 6: il retino giallo |  | indica le ulteriori previsioni del PGT al 2012 (in alcuni casi vi sono state delle modifiche successive con ulteriori espansioni). In queste immagini troverete anche altri colori, sono sempre previsioni (in genere di “servizi”) dei PGT. |

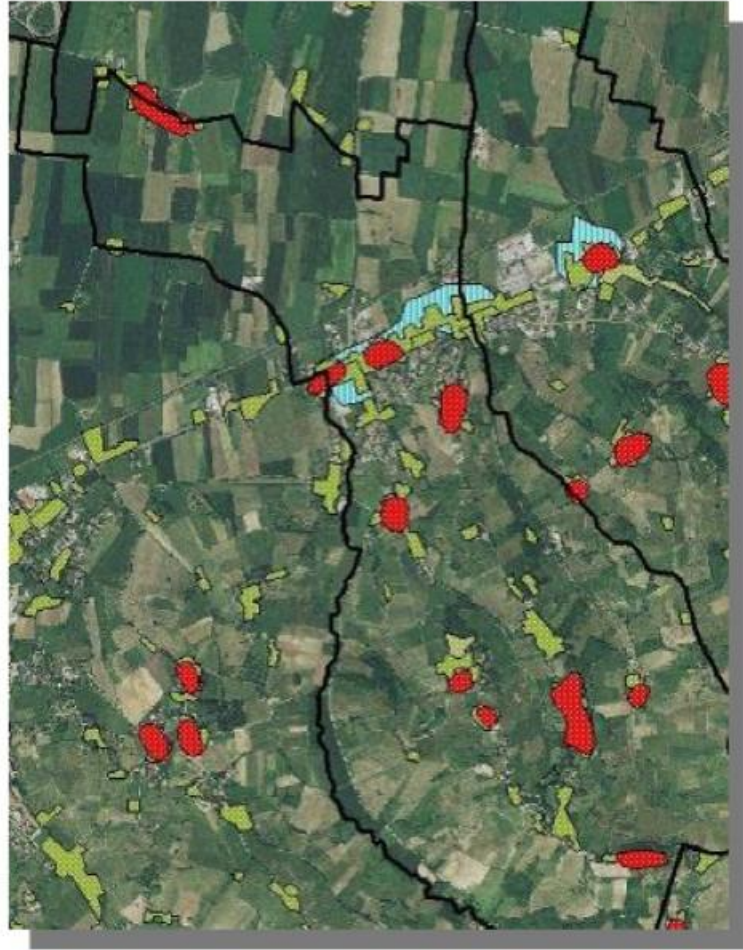
Via Emilia



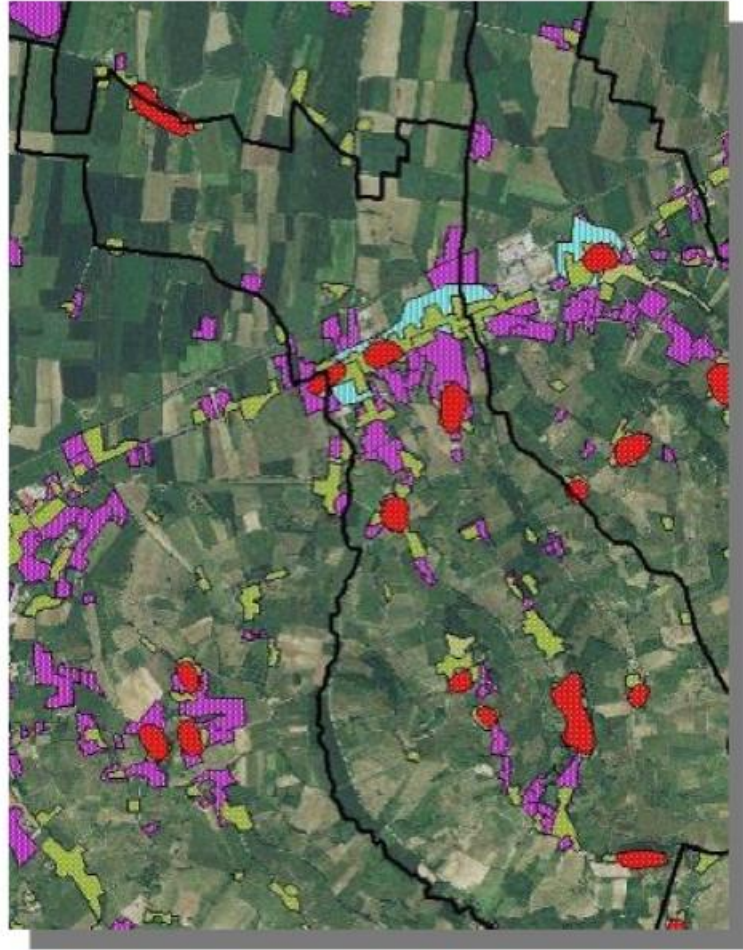
1890



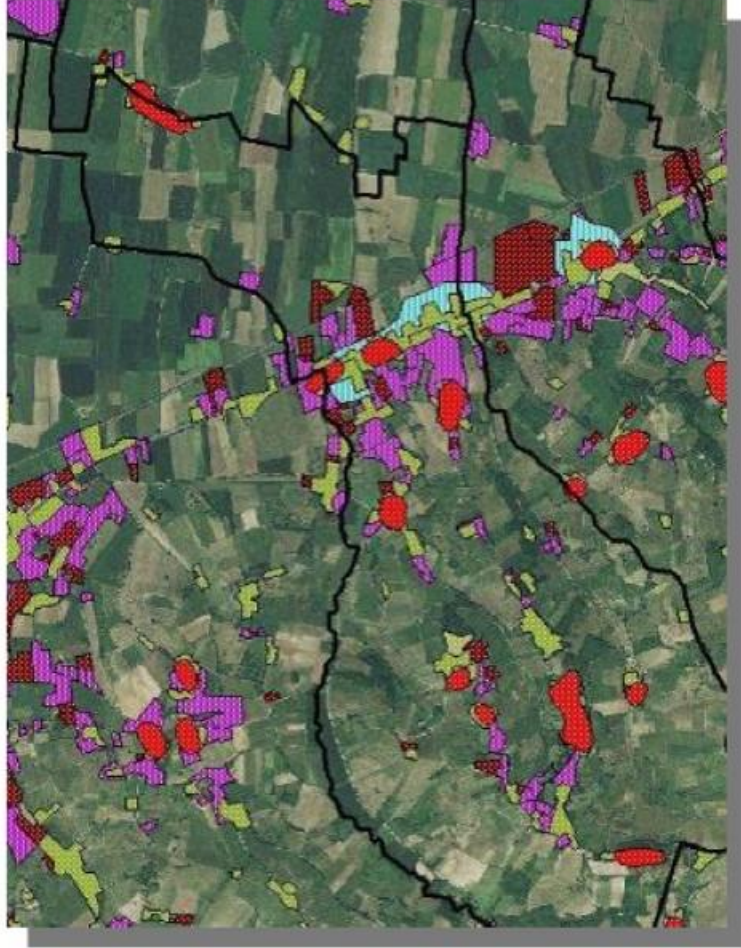
1954



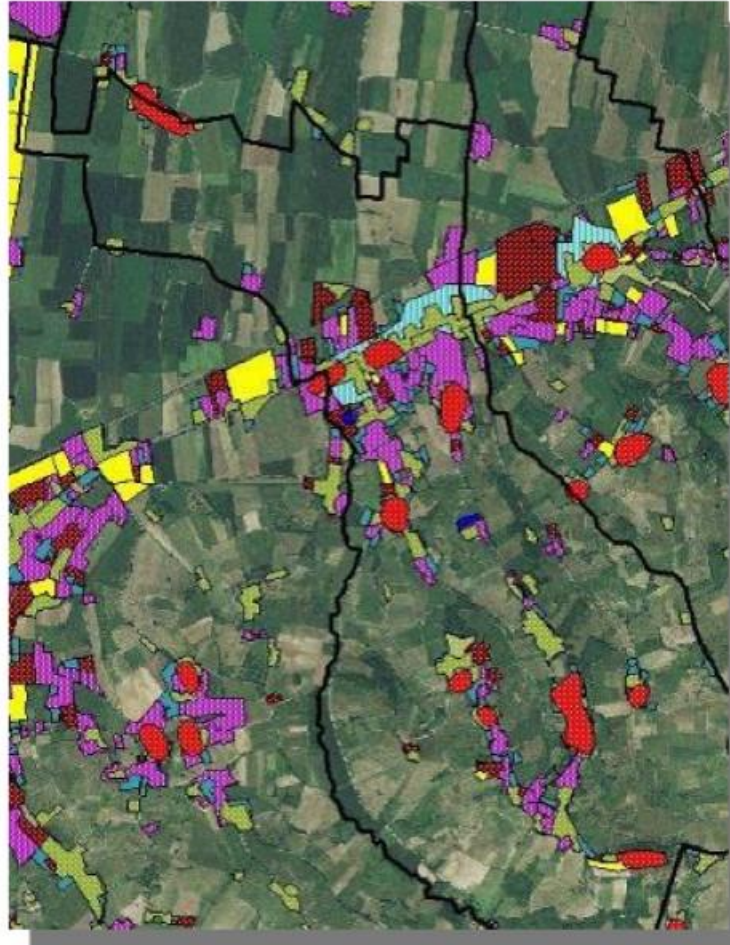
1980



1999



2012



Previsioni PGT



Grazie per
l'attenzione