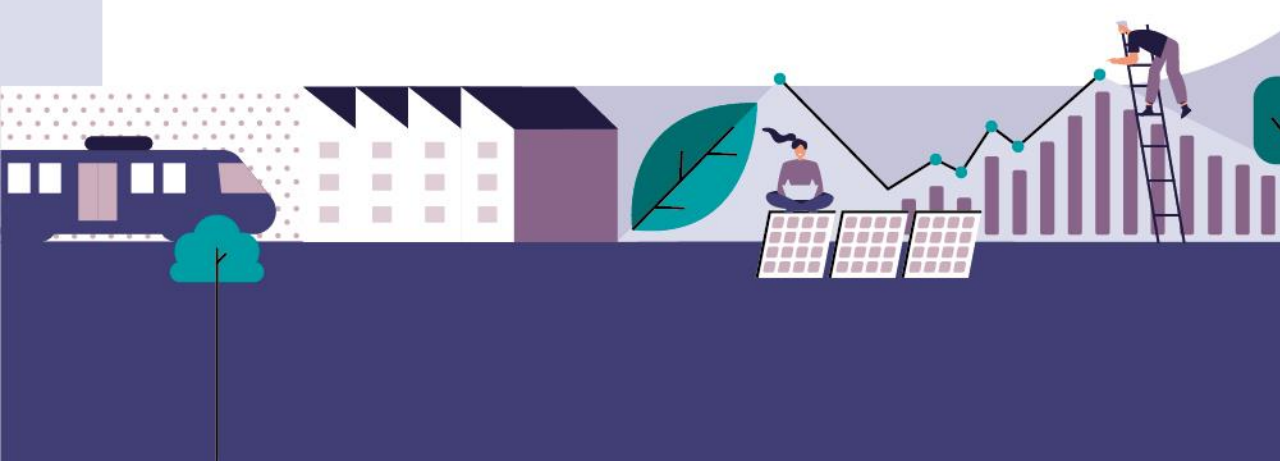


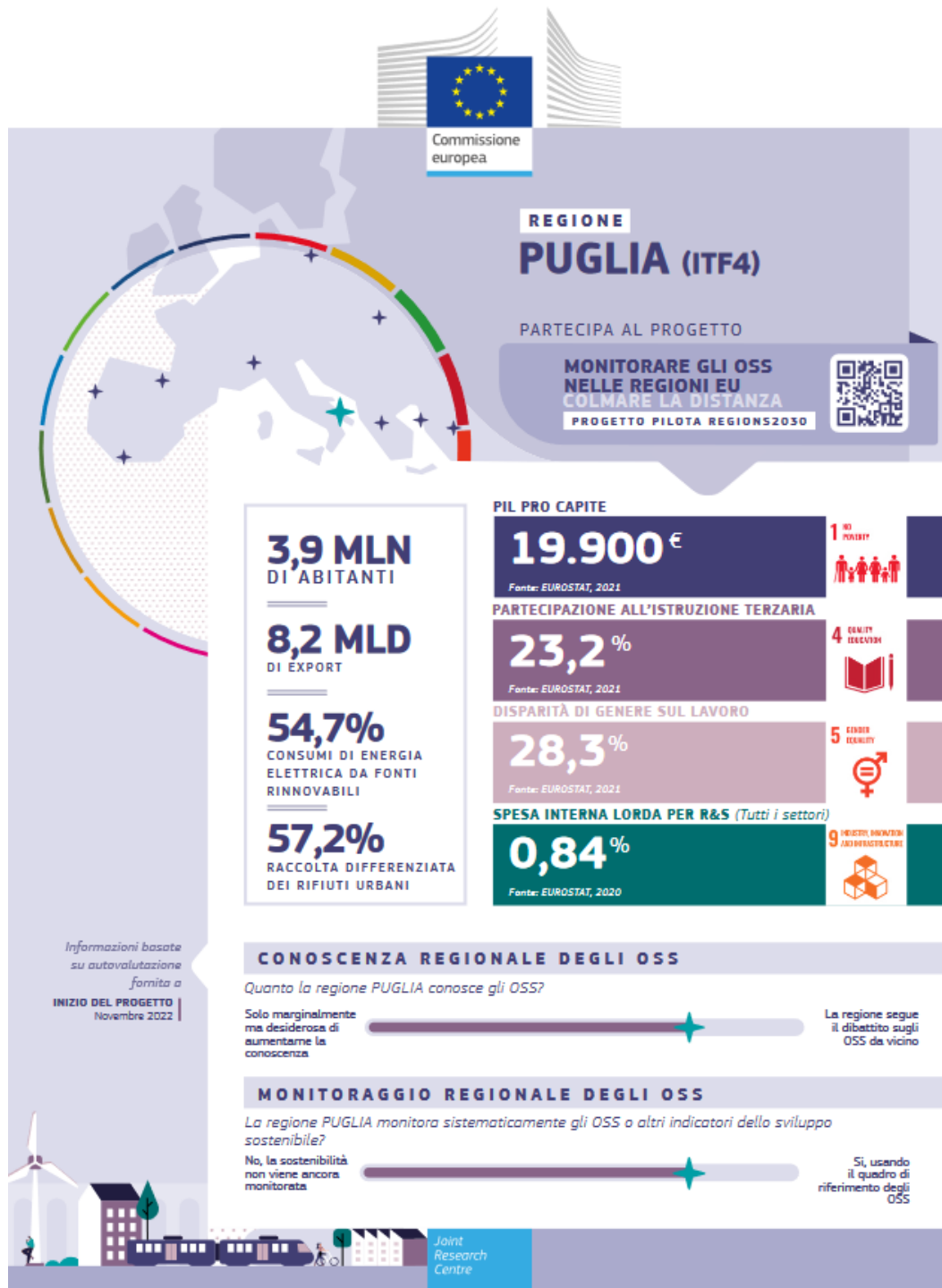
LA REGIONE PUGLIA NEL PROGETTO REGIONS2030

REGIONS2030: IL PIEMONTE
VERSO GLI OBIETTIVI DI SVILUPPO
SOSTENIBILE DI AGENDA 2030

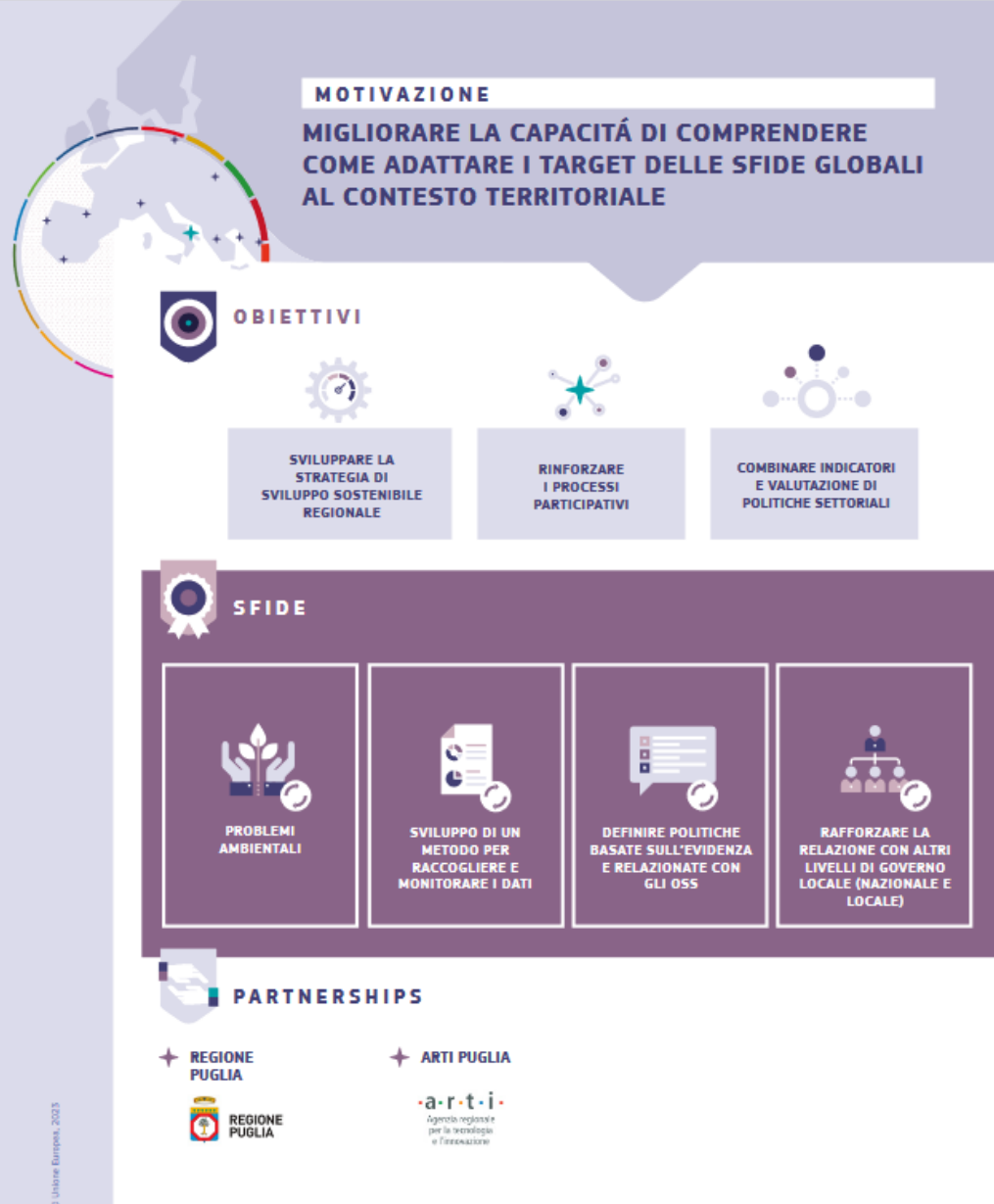
02/10/2023



La Puglia: un quadro di sintesi



La Puglia: motivazioni, obiettivi, sfide



© Unione Europea, 2023

Science for policy
Joint Research Centre
joint-research-centre.ec.europa.eu

IL JRC fornisce competenze e conoscenze scientifiche indipendenti e basate su dati concreti, sostenendo le politiche dell'UE per avere un impatto positivo sulla società.

@EU_ScienceHub
 @EU_ScienceHub
 @EU_Science

EU Science, Research and Innovation
 EU Science Hub - Joint Research Centre

KJ-07-23-233-IT-N, ISBN 978-92-68-04845-0, doi:10.2760/138923

Indicatori proposti dal JRC: caso Puglia

Indicatori proposti dal JRC per SDG e disponibilità per la Puglia

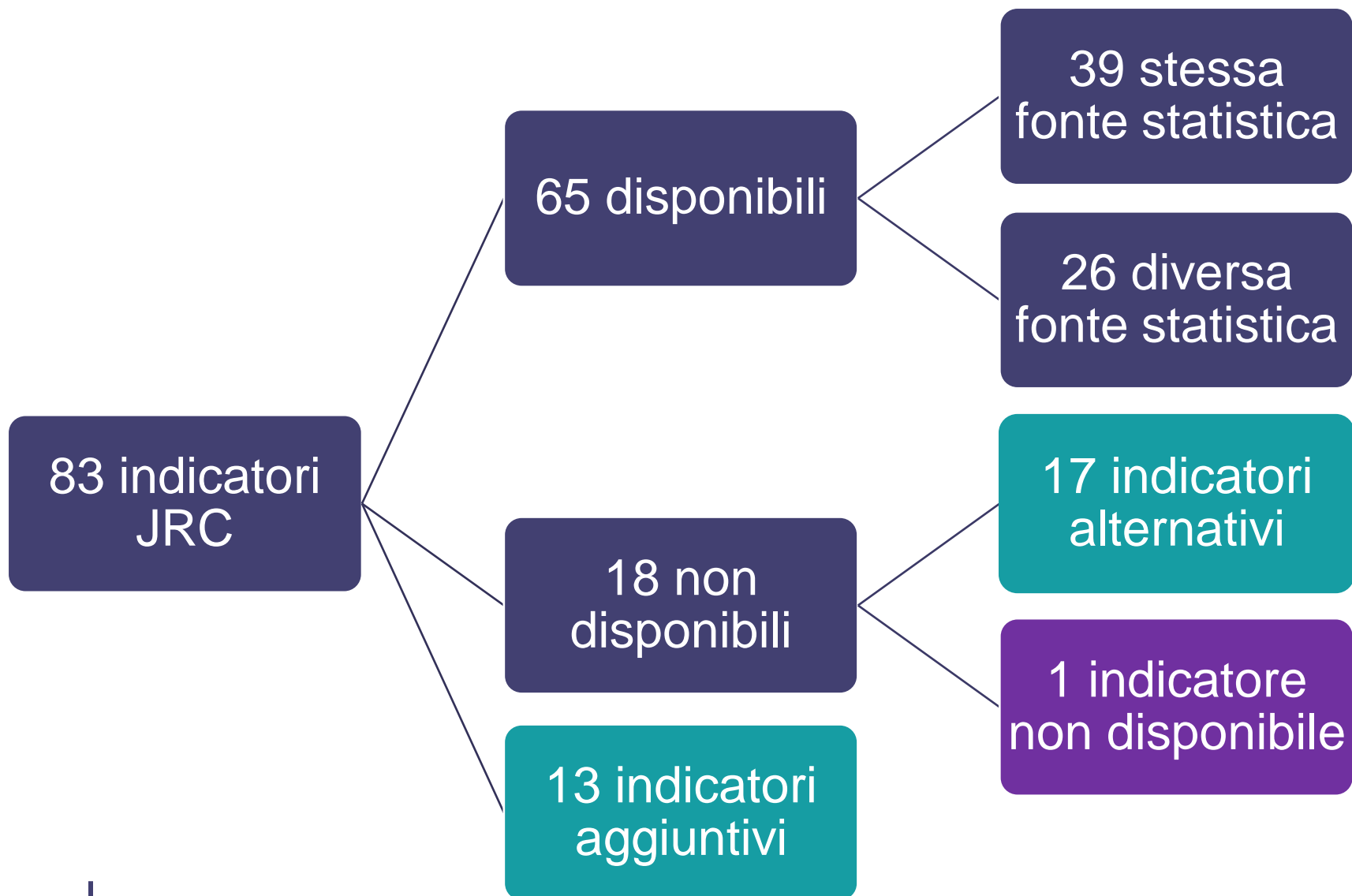
SDGs	Data indicators available	Data indicators Not available	Number indicators
SDG 1	2	2	4
SDG 2	4	0	4
SDG 3	4	1	5
SDG 4	7	0	7
SDG 5	6	1	7
SDG 6	2	2	4
SDG 7	2	2	4
SDG 8	10	0	10
SDG 9	5	0	5
SDG 10	1	1	2
SDG 11	7	2	9
SDG 12	1	2	3
SDG 13	4	0	4
SDG 14	0	3	3
SDG 15	4	0	4
SDG 16	3	1	4
SDG 17	3	1	4
TOTAL	65	18	83

Indicatori disponibili per la Puglia per SDG e fonte

Goal	Number of indicators with data available and collected	Identical source JRC	Not identical source JRC
SDG 1	2	2	0
SDG 2	4	1	3
SDG 3	4	3	1
SDG 4	7	6	1
SDG 5	6	3	3
SDG 6	2	0	2
SDG 7	2	0	2
SDG 8	10	8	2
SDG 9	5	3	2
SDG 10	1	1	0
SDG 11	7	4	3
SDG 12	1	0	1
SDG 13	4	3	1
SDG 15	4	1	3
SDG 16	3	2	1
SDG 17	3	2	1
TOTAL	65	39	26



Dagli 83 indicatori JRC ai 95 del caso Puglia



- ❖ Livello di disaggregazione (5)
- ❖ Non adeguati al contesto regionale (2)
- ❖ Indicatori sperimentali (6)
- ❖ Necessità ulteriori analisi (5)

26 indicatori con diversa fonte statistica

SDG	Indicator Name	SDG Target(s)	Original JRC Source	Source
2	Gross Value Added (GVA) of agriculture, livestock and fishing	2.3 (agricultural productivity)	Eustat (Istituto Vasco de Estadistica)	ISTAT
2	Organic farming: areas with different crops	2.4 (sustainable food production)	Eurostat, Regional Statistics	Ministry of Agricultural, Food and Forestry Policies National information system on organic agriculture (Sinab)
2	Overweight rate	2.2 (end malnutrition)	Public Health Agency of Sweden	ISTAT
3	Deaths due to Covid-19	3.3 (epidemics and diseases)	CNE (National Centre of Epidemiology)	Eurostat, Regional Statistics
4	Women 30-34 years old with higher education level	4.5 (gender and other disparities in education), 4.6 (youth and adult literacy)	Eustat (Istituto Vasco de Estadistica)	Eurostat, Regional Statistics
5	Fatal victims of gender-based violence at the hands of their partners or ex partners	5.2 (gender violence)	INE (National Statistics Institute)	Istat
5	Victims of violence against women	5.2 (gender violence)	Ministry of Equality	Istat
5	Women in parliament and government	5.5 (women participation and leadership)	INE (National Statistics Institute)	ISTAT
6	Water bodies that exceed a standardized quality rating	6.3 (water quality)	NILSA (Navarra de Infraestructuras Locales)	Istituto Protezione Ambiente (ISPRA)
6	Groundwater that exceed a standardized quality rating	6.3 (water quality)	NILSA (Navarra de Infraestructuras Locales)	Istituto Protezione Ambiente (ISPRA)
7	Electricity production that comes from renewable sources	7.2 (share of renewable energy)	Organisation for Economic Cooperation and Development (OECD)	ISTAT
7	Energy intensity	7.3 (energy efficiency)	Euskadi Energia	ISTAT
8	Occupational accidents	8.8 (labour rights)	National Institute for Occupational Safety and Health (SPAIN)	ISTAT
8	Firm creation	8.3 (job creation)	Organisation for Economic Cooperation and Development (OECD)	Eurostat, Regional Statistics
9	GVA of the industry with respect to the GVA of the total sectors (current price)	9.2 (sustainable industrialization)	INE (National Statistics Institute)	OECD
9	Employment in high-technology manufacturing as a percentage of total manufacturing employment	9.5 (promote innovation)	Organisation for Economic Cooperation and Development (OECD)	Eurostat, Regional Statistics
11	Land use	11.3 (sustainable urbanization)	European Commission, Joint Research Centre	LUCAS – EUROSTAT
11	PM2.5 Emissions	11.6 (environmental impact)	European Commission, Joint Research Centre	Istat
11	Household and commercial waste generation per inhabitant	11.6 (environmental impact)	Statistics Portugal	Istat
12	Hazardous Waste	12.4 (chemical management)	INE (National Statistics Institute)	Istat
13	Greenhouse Gas Emissions	13.2 (climate change measures into policy)	Department of Tourism/Economics of the Regional Government	OECD
15	Terrestrial protected areas as a percentage of total area	15.5 (degradation of habitats)	Organisation for Economic Cooperation and Development (OECD)	Istituto Protezione Ambiente (ISPRA)
15	Land Abandonment	15.1 (restoration of ecosystems)	European Commission, Joint Research Centre	LUCAS – EUROSTAT
15	Forest area over total surface area	15.1 (restoration of ecosystems)	Ministry for the Ecological Transition and the Demographic Challenge	FAO-INFC Global Forest Resources Assessment
16	Participation in the last elections	16.6 (effective institutions)	INE (National Statistics Institute)	OECD
17	Imports from developing countries	17.12 (imports from least developed countries)	Own elaboration (regional government)	ISTAT



I 18 indicatori non disponibili

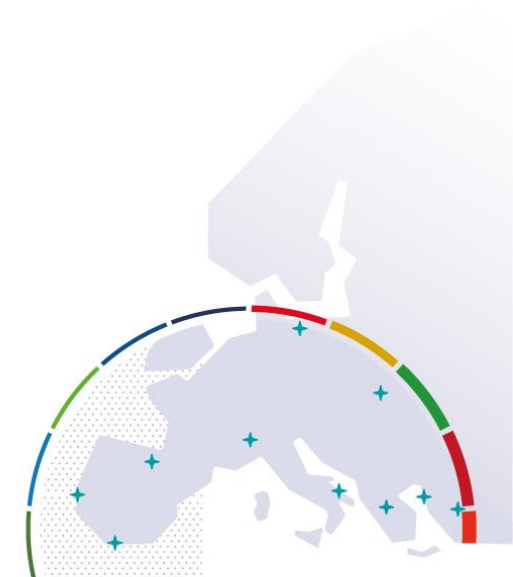
I 18 indicatori per i quali non è stato possibile reperire dati sono stati sostituiti da indicatori in grado di:

- ❖ rispettare lo stesso obiettivo
 - ❖ utilizzare dati ufficiali provenienti da fonti statistiche nazionali: riproducibili per tutte le regioni italiane
 - ❖ **riflettere le strategie regionali e le peculiarità regionali**
- Solo per uno dei 18 indicatori non sono state trovate alternative valide (Official Development Assistance)



I 2 indicatori non adeguati al contesto regionale

- ❖ “Electricity production that comes from nuclear power” (SDG 7) → come per tutte le altre regioni italiane
- ❖ “Estuarine with high water quality” (SDG 14) – caso specifico per la regione – blue economy



17 indicatori alternativi

SDG	Indicator Name	SDG Target(s)	Non-fit for purpose	Fit - No data	Alternative indicator
1	Affected people due to disasters	1.5 (exposure to vulnerability)		X	Population exposed to water floods
1	Material and social deprivation	1.1 (extreme poverty)		X	Severe material deprivation rate
3	Self reported unmet needs for medical examination	3.c (health financing and recruitment)		X	Unmet needs for medical examination
5	Inactive population rate due to caregiving responsibilities	5.4 (unpaid work)		X	Ratio of employment rate for women aged 25-49 with at least one child aged 0-5 to the employment rate of women 25-49 years without children, multiplied by 100
6	Population served by safely managed drinking water supply services	6.3 (water quality)		X	Percentage of households who report irregularities in water supply
6	Population connected to wastewater with at least secondary treatment	6.3 (water quality)		X	Urban water treatment plants in operation by type of secondary/advanced treatment
7	Electricity production that comes from nuclear power	7.1 (access to energy)	X		Consumption of electricity from renewable resources in for transports (share of the final gross energy consumption)
7	People affected by energy poverty	7.2 (share of renewable energy)		X	Consumers' satisfaction about the Electricity providers' services
10	Unemployment of people with disabilities	10.2 (inclusion irrespective of status)		X	Net Entry rate in the job market of people with disabilities
11	Transport performance	11.2 (access to transport systems)		X	Seats/ km offered by the local public transport service
11	Difference between built-up area growth rate and population growth rate	11.3 (sustainable urbanization)		X	Marginal land consumption
12	Carbon footprint	12.2		X	Domestic material consumption
12	Food waste	12.3 (reduce food waste)		X	Regional Food Waste
14	Estuarine with high/very high water quality	14.1 (reduce marine pollution)	X		Beached marine waste
14	Protected coastal area as a percentage of total coastal area	14.5 (coastal and marine areas)		X	Protected Marine Areas
14	Coastal areas with good/very good water quality	14.5 (coastal and marine areas)		X	Coastal bathing waters
16	Transparency index	16.6 (effective institutions)		X	Composite index of service accessibility



17 indicatori alternativi

SDG	Indicator Name	SDG Target(s)	Non-fit for purpose	Fit - No data	Alternative indicator
1	Affected people due to disasters	1.5 (exposure to vulnerability)		X	Population exposed to water floods
1	Material and social deprivation	1.1 (extreme poverty)		X	Severe material deprivation rate
3	Self reported unmet needs for medical examination	3.c (health financing and recruitment)		X	Unmet needs for medical examination
5	Inactive population rate due to caregiving responsibilities	5.4 (unpaid work)		X	Ratio of employment rate for women aged 25-49 with at least one child aged 0-5 to the employment rate of women 25-49 years without children, multiplied by 100
6	Population served by safely managed drinking water supply services	6.3 (water quality)		X	Percentage of households who report irregularities in water supply
6	Population connected to wastewater with at least secondary treatment	6.3 (water quality)		X	Urban water treatment plants in operation by type of secondary/advanced treatment
7	Electricity production that comes from nuclear power	7.1 (access to energy)	X		Consumption of electricity from renewable resources in for transports (share of the final gross energy consumption)
7	People affected by energy poverty	7.2 (share of renewable energy)		X	Consumers' satisfaction about the Electricity providers' services
10	Unemployment of people with disabilities	10.2 (inclusion irrespective of status)		X	Net Entry rate in the job market of people with disabilities
11	Transport performance	11.2 (access to transport systems)		X	Seats/ km offered by the local public transport service
11	Difference between built-up area growth rate and population growth rate	11.3 (sustainable urbanization)		X	Marginal land consumption
12	Carbon footprint	12.2		X	Domestic material consumption
12	Food waste	12.3 (reduce food waste)		X	Regional Food Waste
14	Estuarine with high/very high water quality	14.1 (reduce marine pollution)	X		Beached marine waste
14	Protected coastal area as a percentage of total coastal area	14.5 (coastal and marine areas)		X	Protected Marine Areas
14	Coastal areas with good/very good water quality	14.5 (coastal and marine areas)		X	Coastal bathing waters
16	Transparency index	16.6 (effective institutions)		X	Composite index of service accessibility



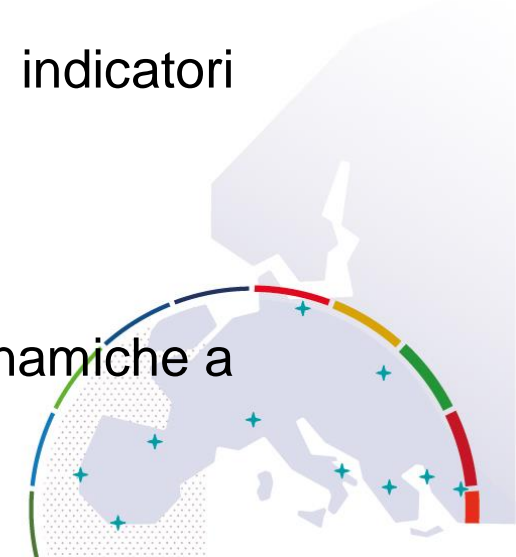
13 indicatori aggiuntivi specifici per il contesto

SDG	Indicator Name	SDG Target(s)	Strategia regionale di riferimento
4	Percentage of seats authorized in socio-educational services for early childhood on children aged 0-2	4.4	Strategia regionale Povertà educativa
4	Individual who have basic or above basic overall digital skills	4.2	Puglia Digitale 2030
6	Urban water supply network efficiency	6.4.1 - Change in water-use efficiency over time	Blue Economy
8	Share of person not in regular occupation	8.3	Agenda per il Lavoro
9	Share of manufacturing value added of small-scale manufacturing enterprises on the total manufacturing v.a.	9.3	S3
12	Tourism intensity index	12.b tourism sustainability	Puglia3x6x5 - Strategie di Turismo e Cultura
12	Impact of tourism on waste	12.b tourism sustainability	Puglia3x6x5 - Strategie di Turismo e Cultura
12	Cultural demand index	12.b tourism sustainability	PiiiL CULTURA IN PUGLIA - Piano Strategico della Cultura della Regione Puglia
12	Share of employment in cultural and creative sectors	12.b tourism sustainability	PiiiL CULTURA IN PUGLIA - Piano Strategico della Cultura della Regione Puglia
13	Concern for climate change	13.3	Strategia Regionale di Adattamento ai Cambiamenti Climatici -
15	Fragmentation of natural and agricultural land	15.3	Strategia sulla Biodiversità e PAF per Rete Natura 2000
16	Perception of safety walking alone in the dark	16.1	Agenda di genere
17	Foreign workers' remittances	17.3	#mareAsinistra



Considerazioni generali

- ❖ Il set di indicatori fornito dal JRC per monitorare gli obiettivi di sviluppo sostenibile a livello regionale sembra **offrire una panoramica adeguata del raggiungimento degli obiettivi regionali**
- ❖ È stato possibile raccogliere e analizzare i dati per 65 indicatori sugli 83 individuati:
 - 39 sono perfettamente in linea con la fonte di dati suggerita
 - per i restanti 26 è stato necessario utilizzare fonti di dati alternative, ma sempre basate su statistiche ufficiali
- ❖ **Tutti gli obiettivi sono stati coperti dai dati raccolti**, mediante anche indicatori sostitutivi e/o aggiuntivi (caso dell'SDG 14)
- ❖ L'80% dei dati raccolti proviene da fonti statistiche ufficiali
- ❖ Le serie storiche sono sufficientemente ampie da consentire l'analisi delle dinamiche a breve e lungo termine



Considerazioni finali

- ❖ Il Progetto ha sapientemente **calibrato un approccio top-down** (set di indicatori del JRC) **con quello bottom-up** (proposte integrative delle Regioni pilota)
- ❖ Nel monitoraggio del raggiungimento degli SDGs è infatti importante considerare le **specifiche variabilità territoriali**
- ❖ Complessivamente, il caso studio della Puglia ha restituito la fotografia su **95 indicatori di monitoraggio**



Evento regionale in Puglia: 5 ottobre

❖ SESSIONE 1:

SEMINARIO

“Regional Sustainable Development Strategy: its implementation and monitoring of the SDGs”

❖ SESSIONE 2:

CAPACITY-BUILDING

“Data supporting policies in regional strategies”

REGIONS2030: Monitoring the SDGs in Puglia
PUGLIA REGION

Thursday
05/10/ 2023
9:30-14:30 (CET)

#REGIONS2030 #GlobalGoals

European Commission

REGIONAL EVENT

Grazie per l'attenzione

Annamaria Fiore, PhD

Responsabile Area strategica «Ricerca economica e informazione statistica»
ARTI – Agenzia Regionale per la Tecnologia e l'Innovazione
Regione Puglia
a.fiore@arti.puglia.it

in collaborazione con **Massimo Armenise**, Istat, esperto JRC



