

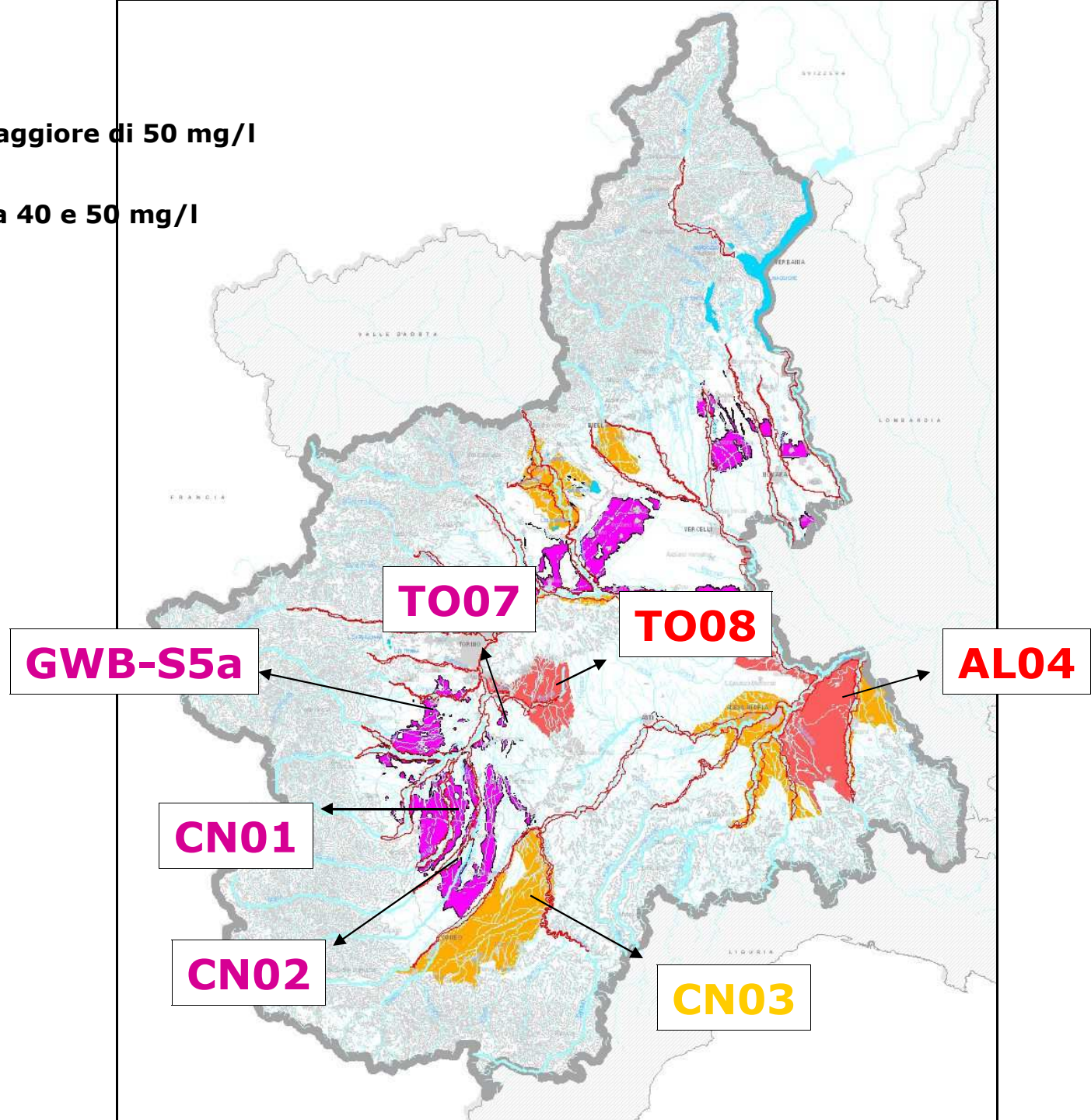
**R.R. 9R/2002**

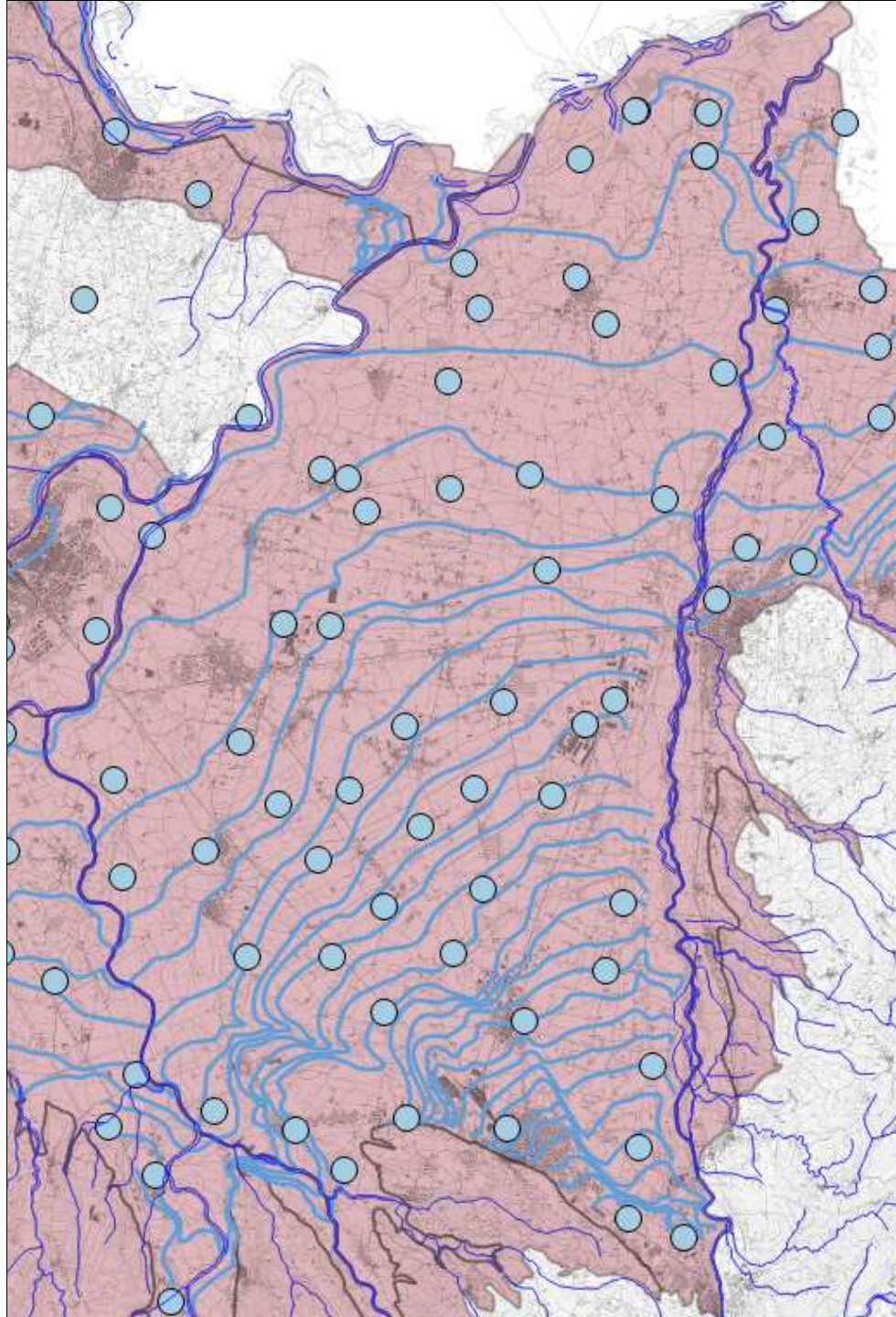
**Red square** Zone vulnerate  
LV1 – media Nitrati maggiore di 50 mg/l

**Yellow square** Zone vulnerate  
LV2 – media Nitrati tra 40 e 50 mg/l

**R.R. 12R/2007**

**Purple square** Zone vulnerabili

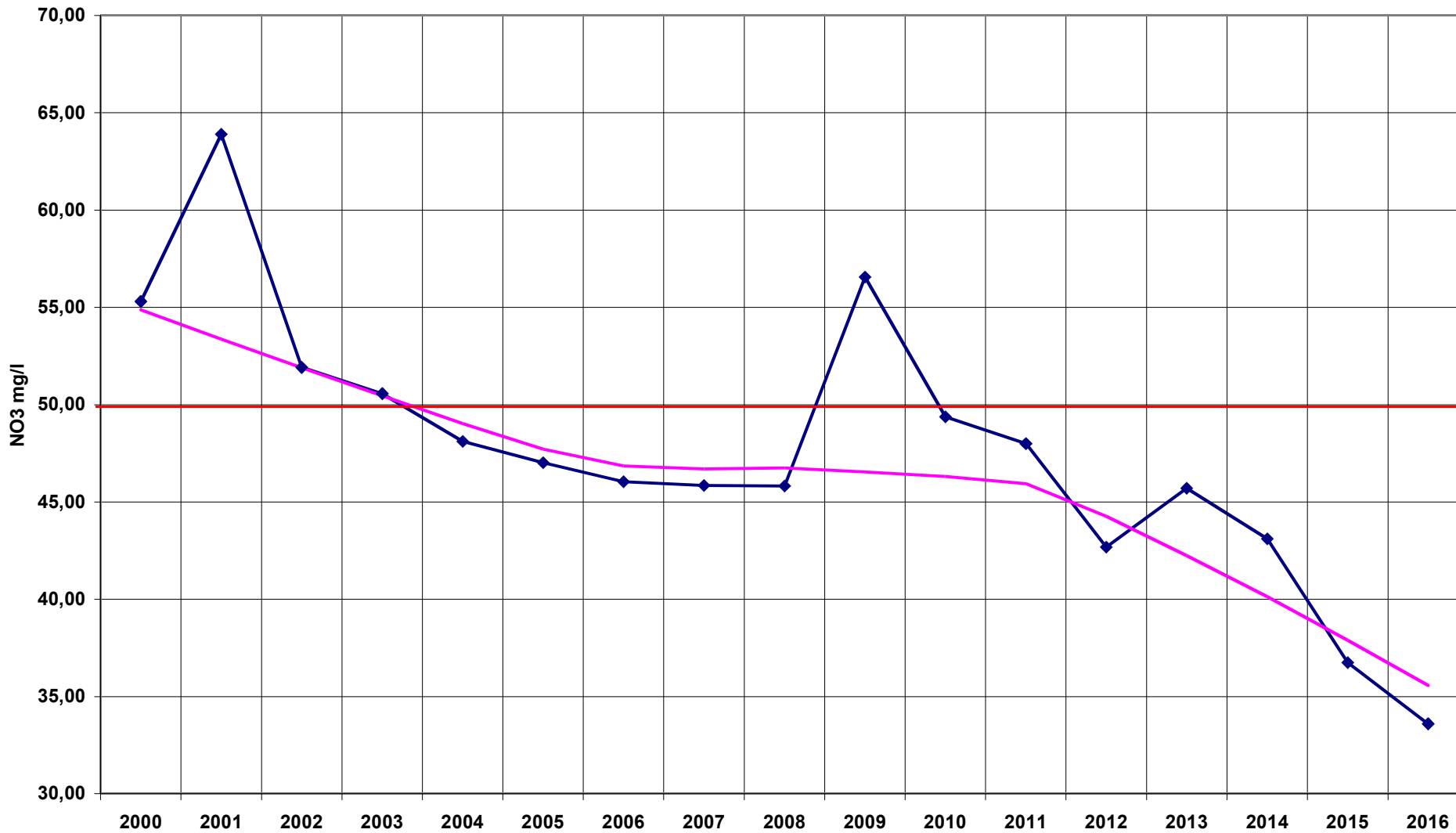


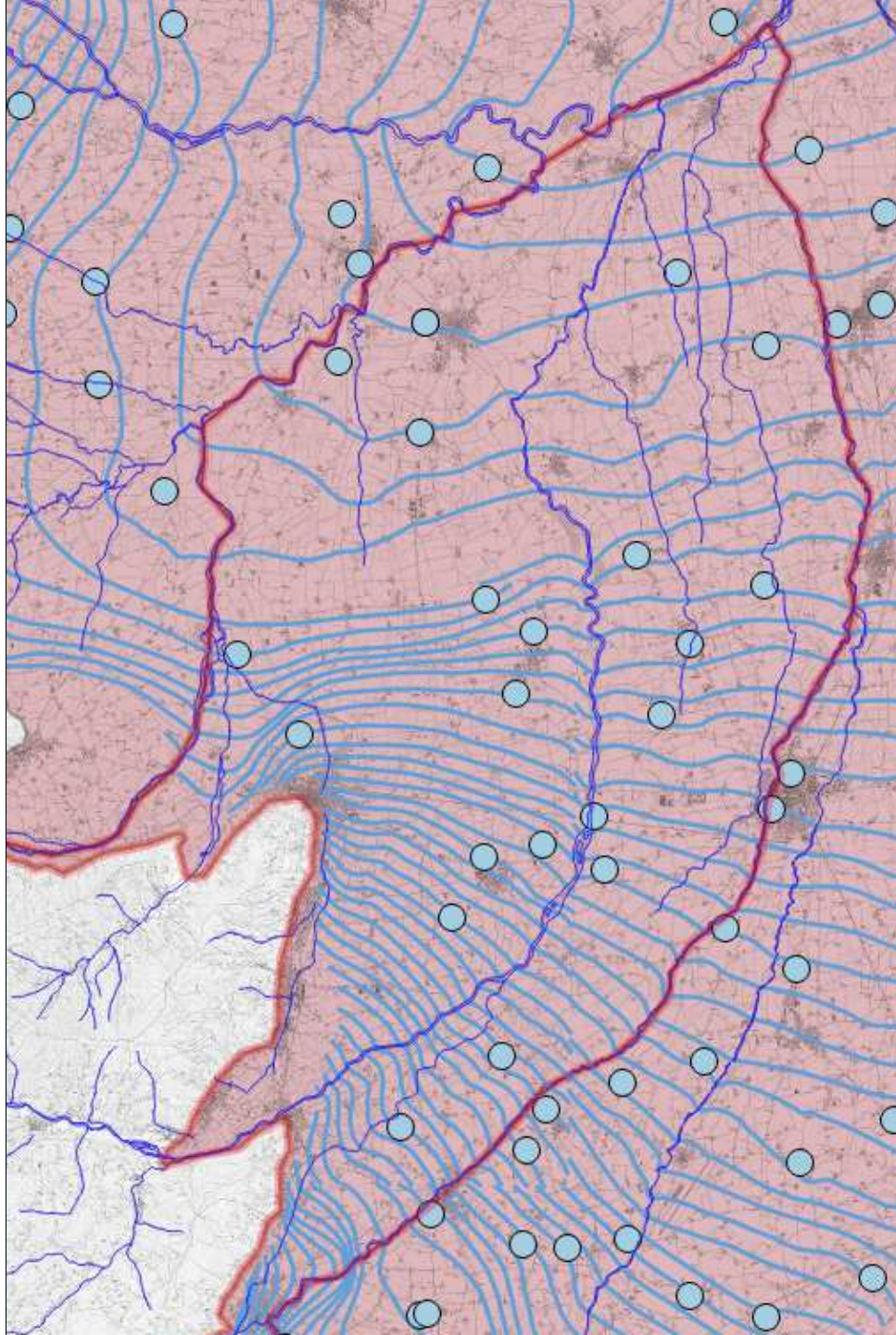


**AL04  
Pianura  
alessandrina  
tra Orba e  
Scrivia**

# AL04 - Pianura alessandrina

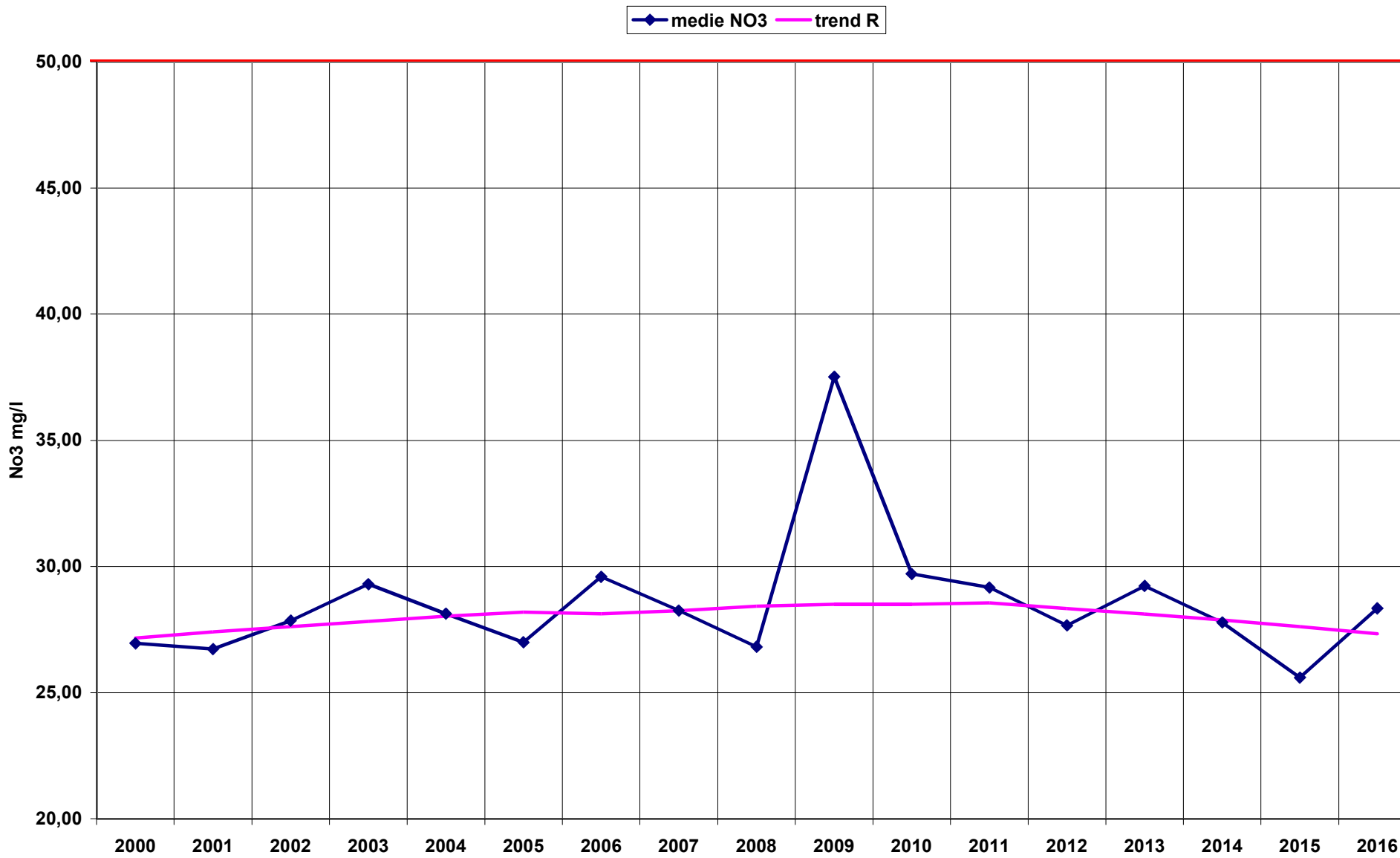
◆ medie NO3    — Trend R

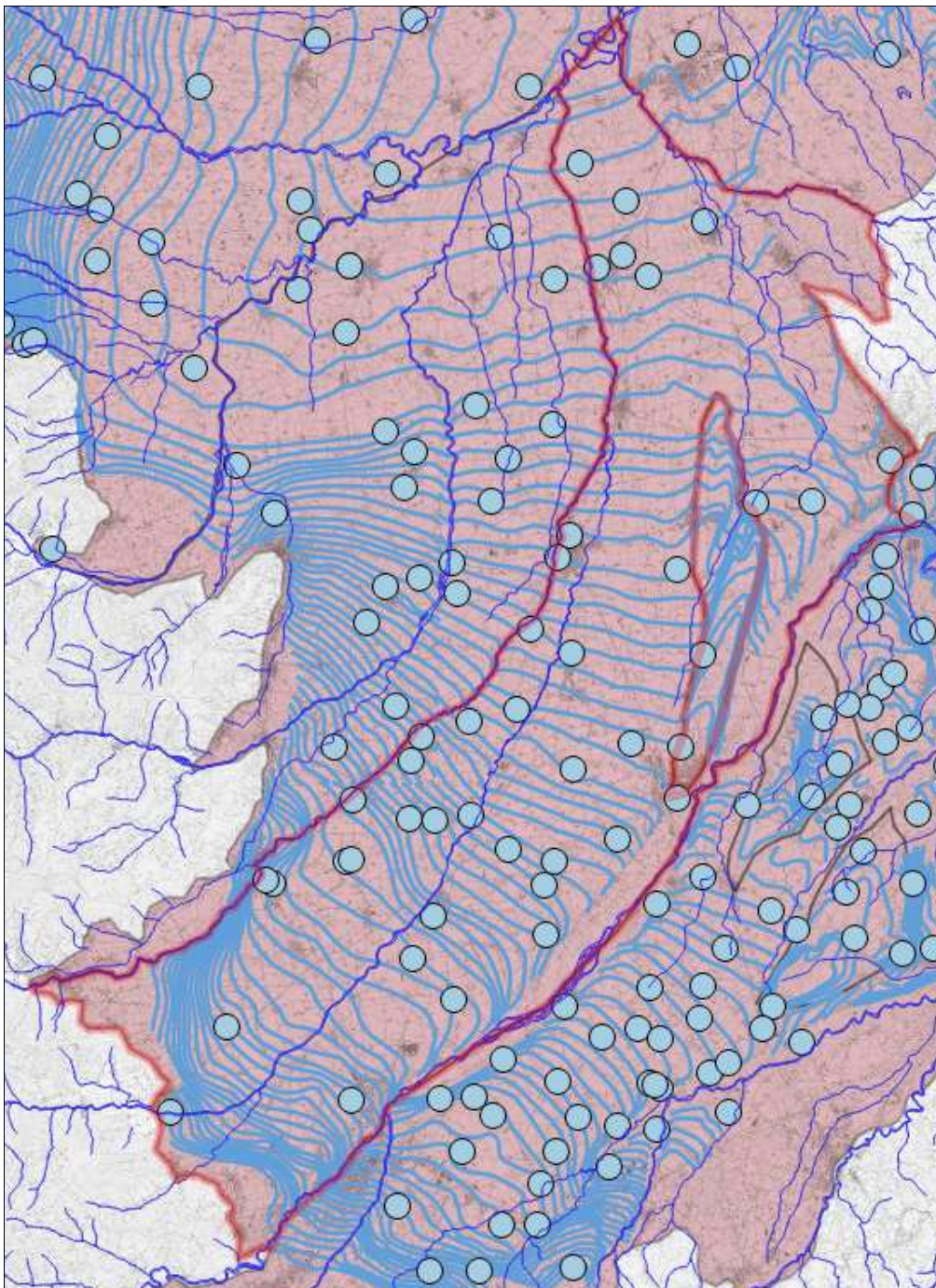




**CN01**  
**Pianura cuneese**  
**tra Po e Maira**

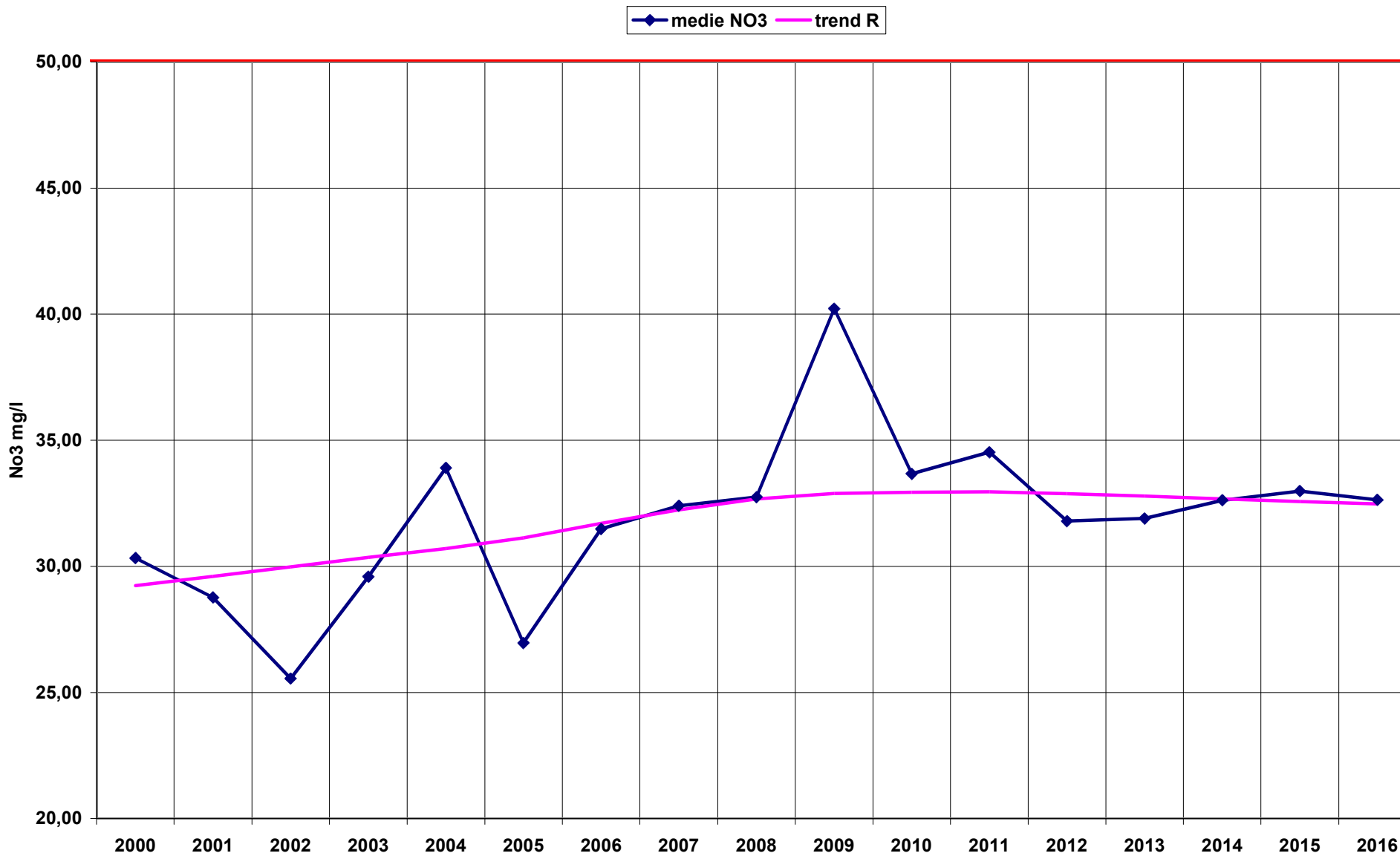
### CN01 - Pianura cuneese tra Po e Maira

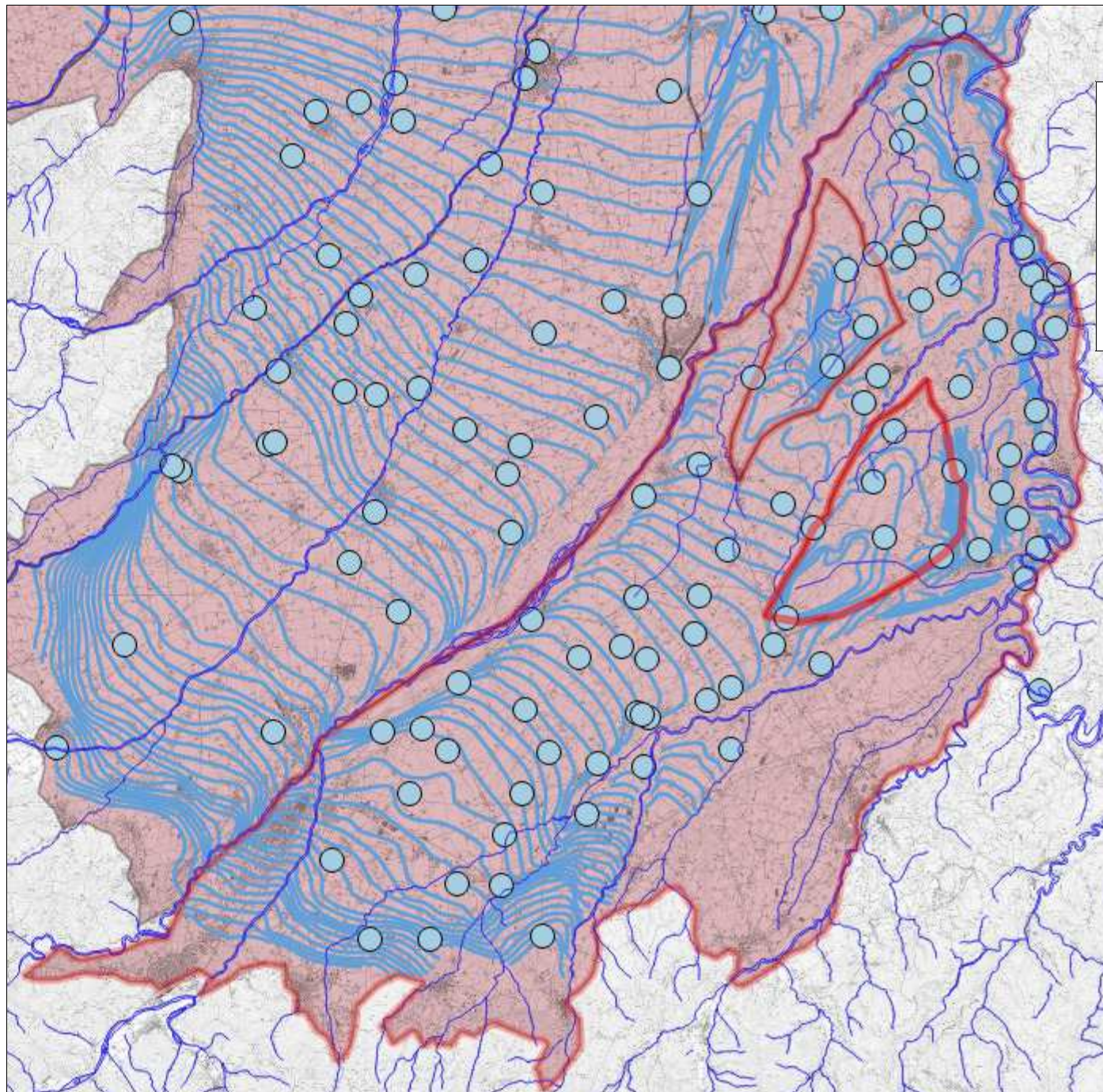




**CN02**  
**Pianura cuneese tra**  
**Maira e Stura di**  
**Demonte**

# CN02 - Pianura cuneese tra Maira e Stura di Demonte

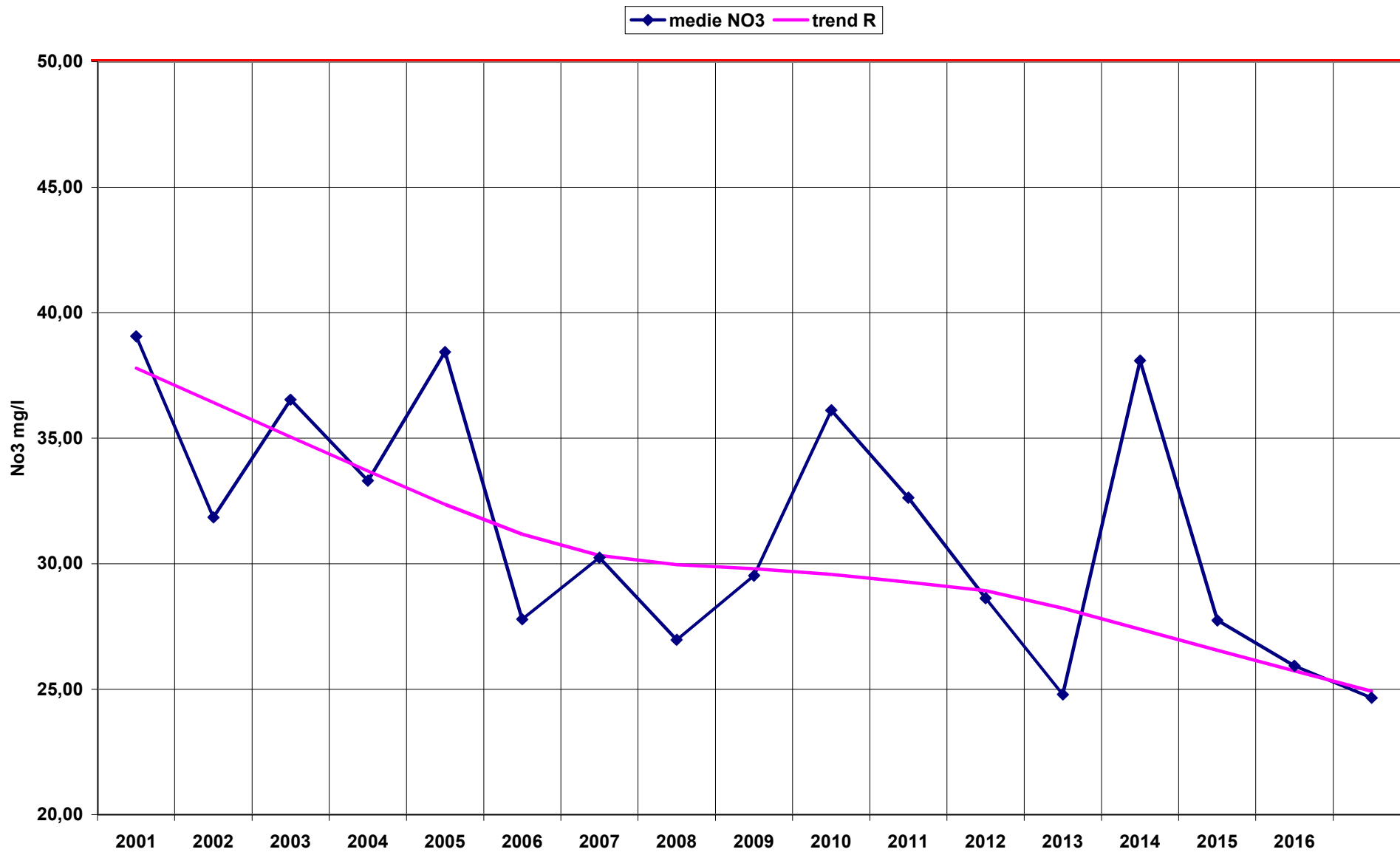


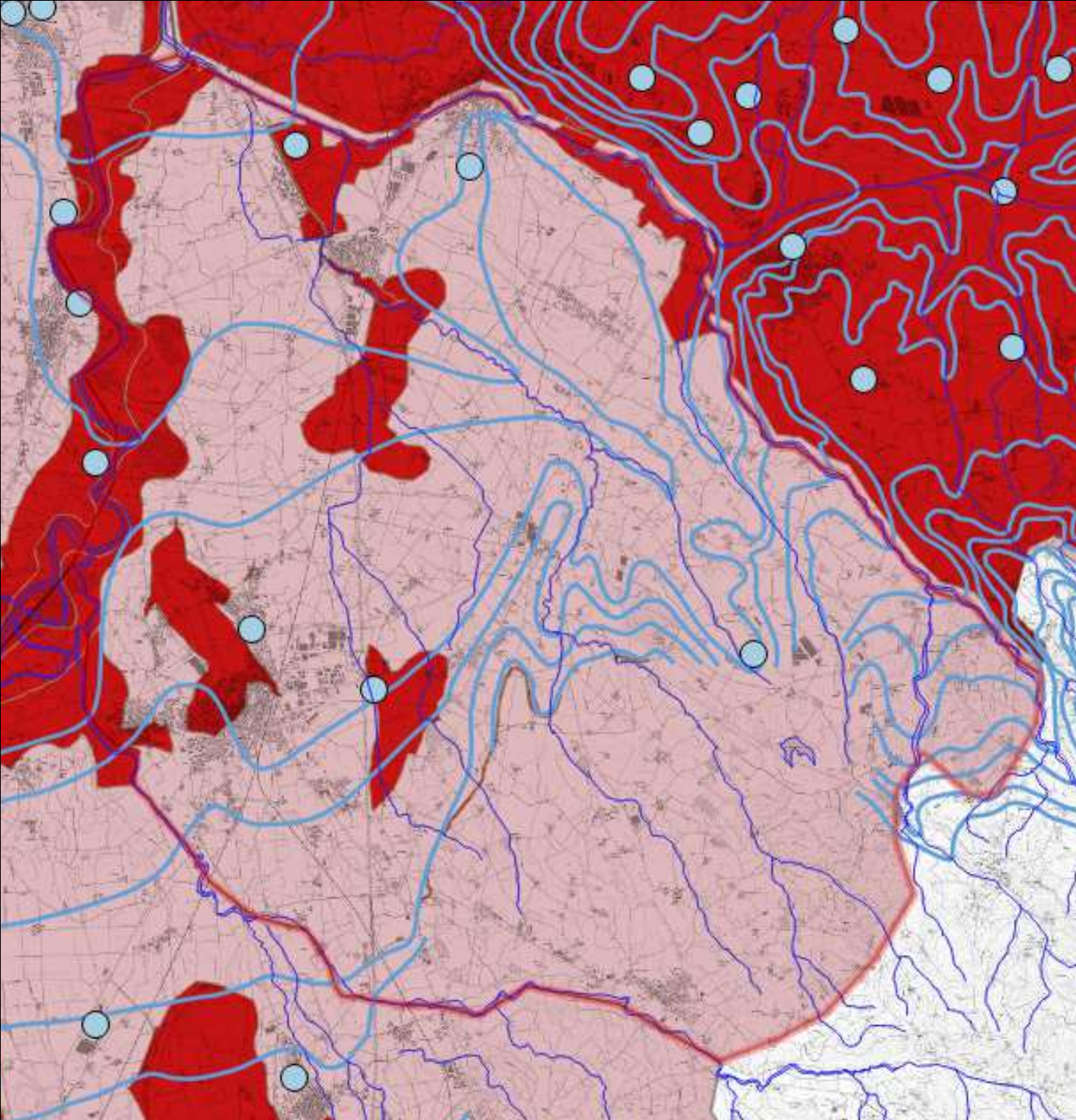


**CN03**  
**Pianura**  
**cuneese in ds**  
**Stura di**  
**Demonte**



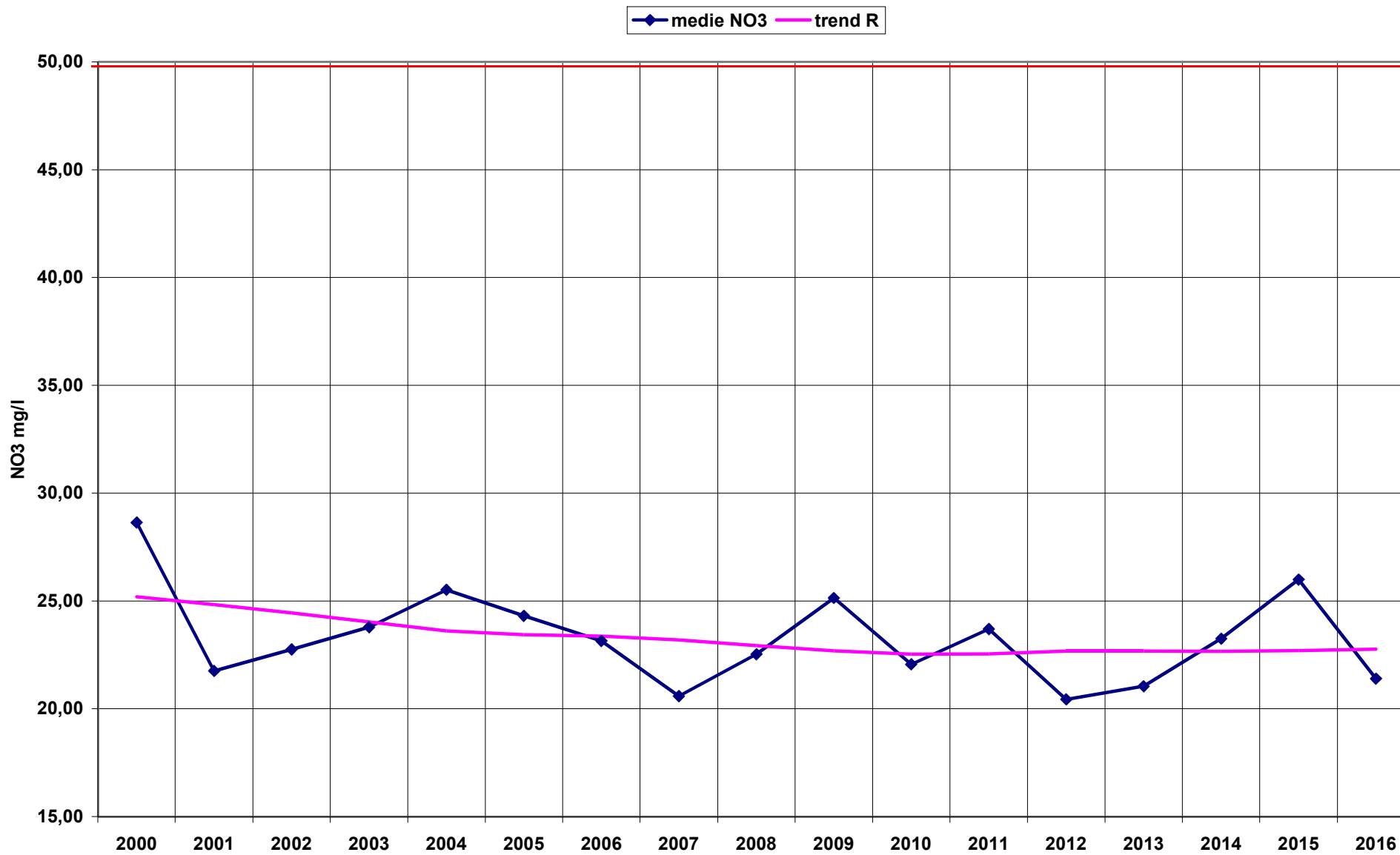
### CN03 - Pianura cuneese in destra Stura di Demonte



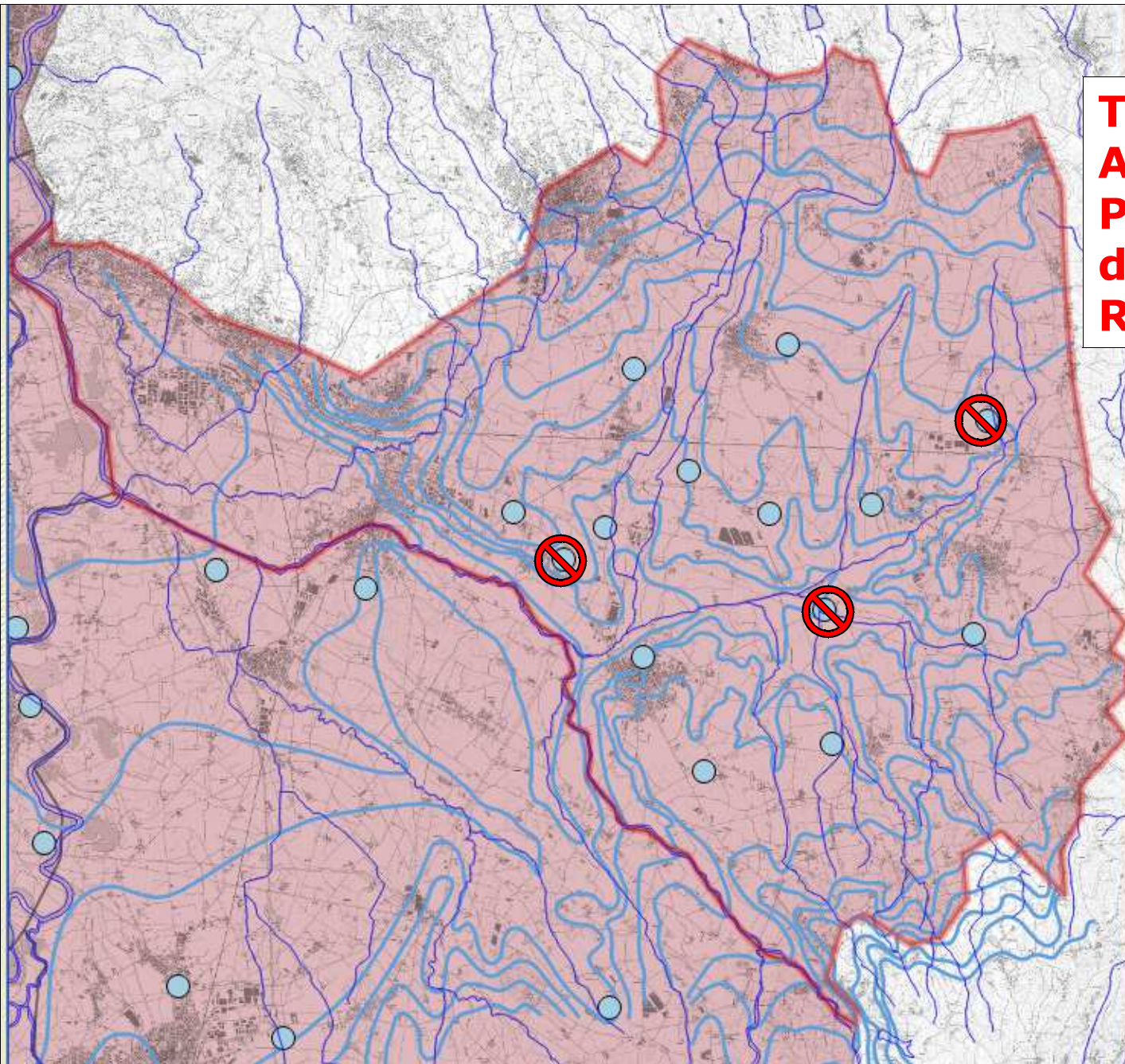


**T007**  
**Pianura**  
**torinese tra**  
**Chisola e Po**

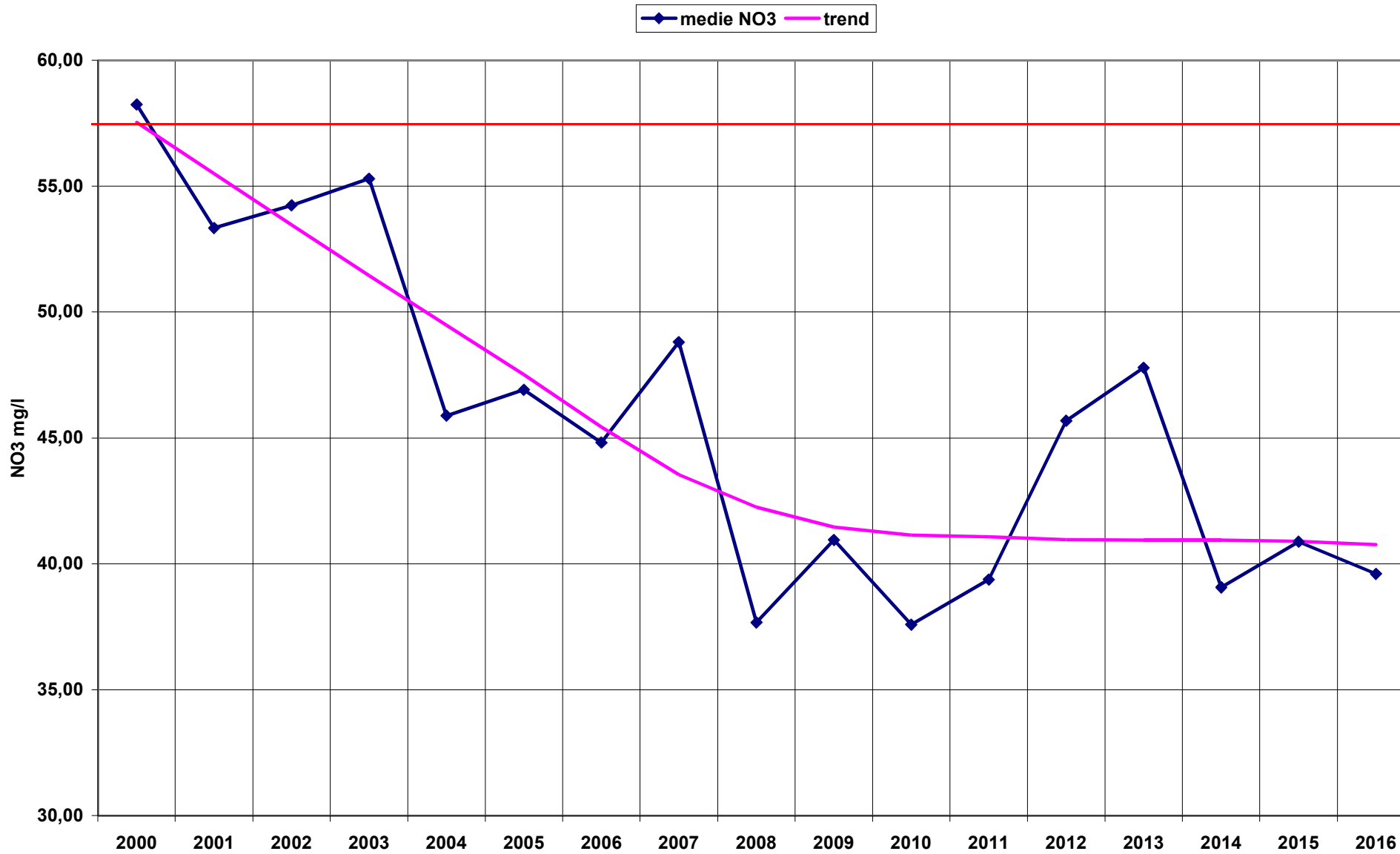
# TO07 - Pianura torinese tra Chisola e Po

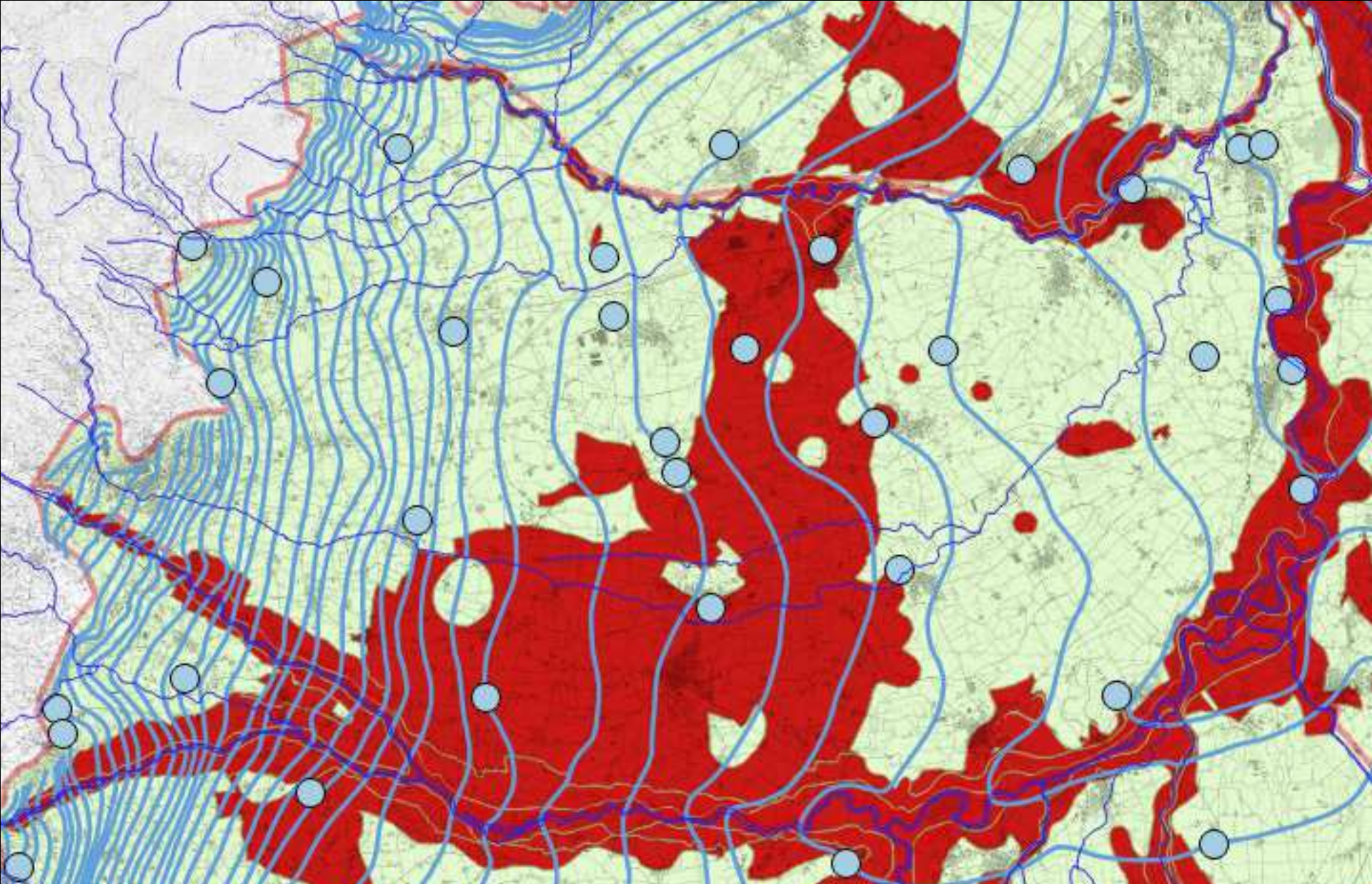


**T008**  
**Altipiano di**  
**Poirino in**  
**destra Banna-**  
**Rio Verde**



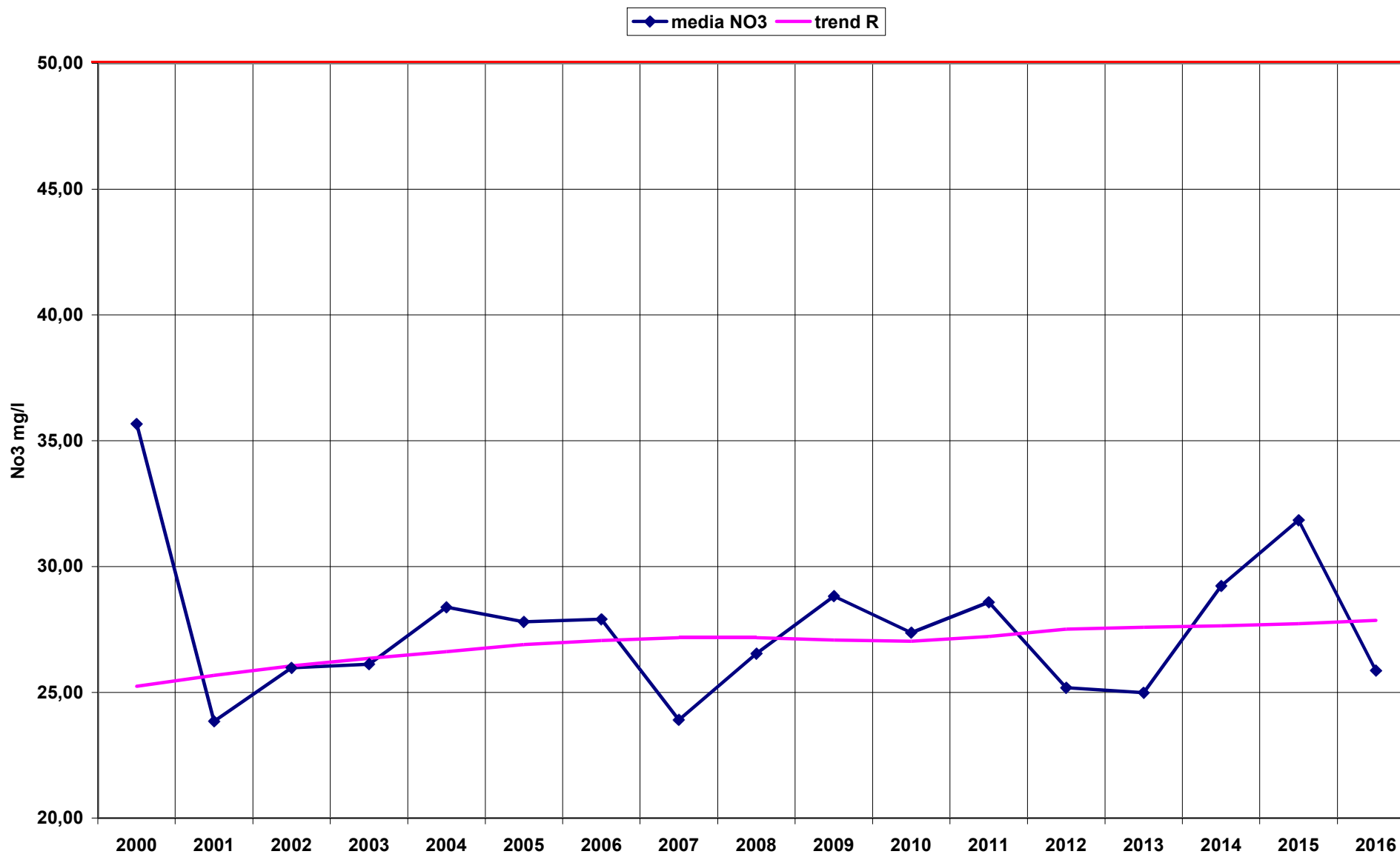
# TO8 - Altopiano di Poirino in destra Banna - Rivoerde





**GWB-S5a – Pianura pinerolese tra Chisola e Chisone-Pellice**

# GWB-S5a -Pianura Pinerolese tra Chisola Chisone-Pellice

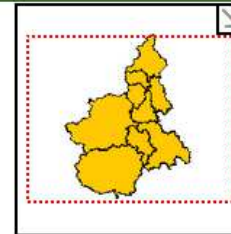
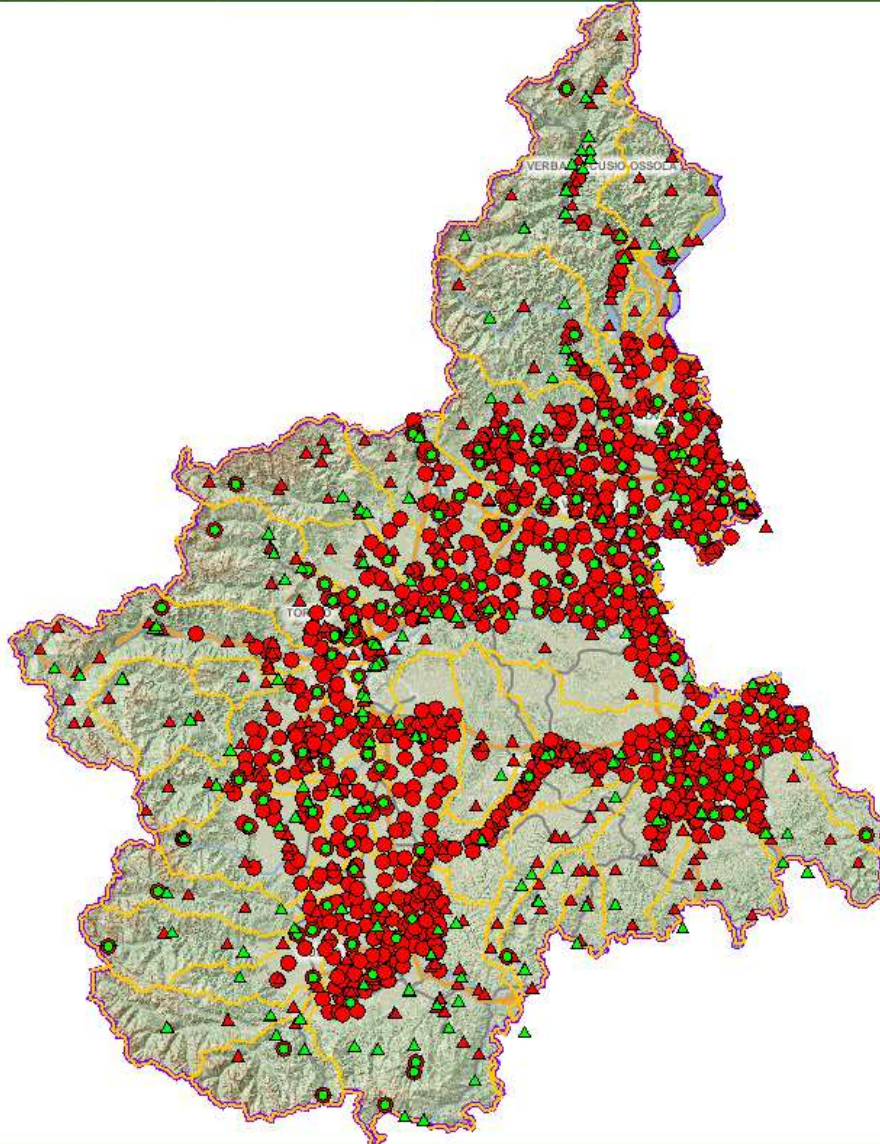
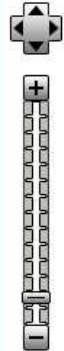


# Il monitoraggio delle acque



ricerca sulla mappa

ricerca alfanumerica



## Tavola dei contenuti

Livelli Proprieta Legenda

Tematismi Risorse Idriche

- Area idrografica
- Corpi idrici Dir. 2000.60.CE - WFD
  - Fiumi
  - Laghi
  - Acque sotterranee Superficiali
  - Acque sotterranee Profonde
- Stazione di monitoraggio
  - automatica superficiale
  - automatica sotterranea
  - manuale superficiale
  - manuale sotterranea
- Derivazioni
  - Presa da corpo idrico superficiale naturale
  - Presa da corpo idrico superficiale artificiale
  - Pozzo
  - Sorgente
  - Fontanile
  - Trincea drenante
  - Restituzione
- Scarico da insediamento produttivo
  - in corpo idrico superficiale
  - in sottosuolo o in corpo idrico sotterraneo
  - su suolo

20 km