


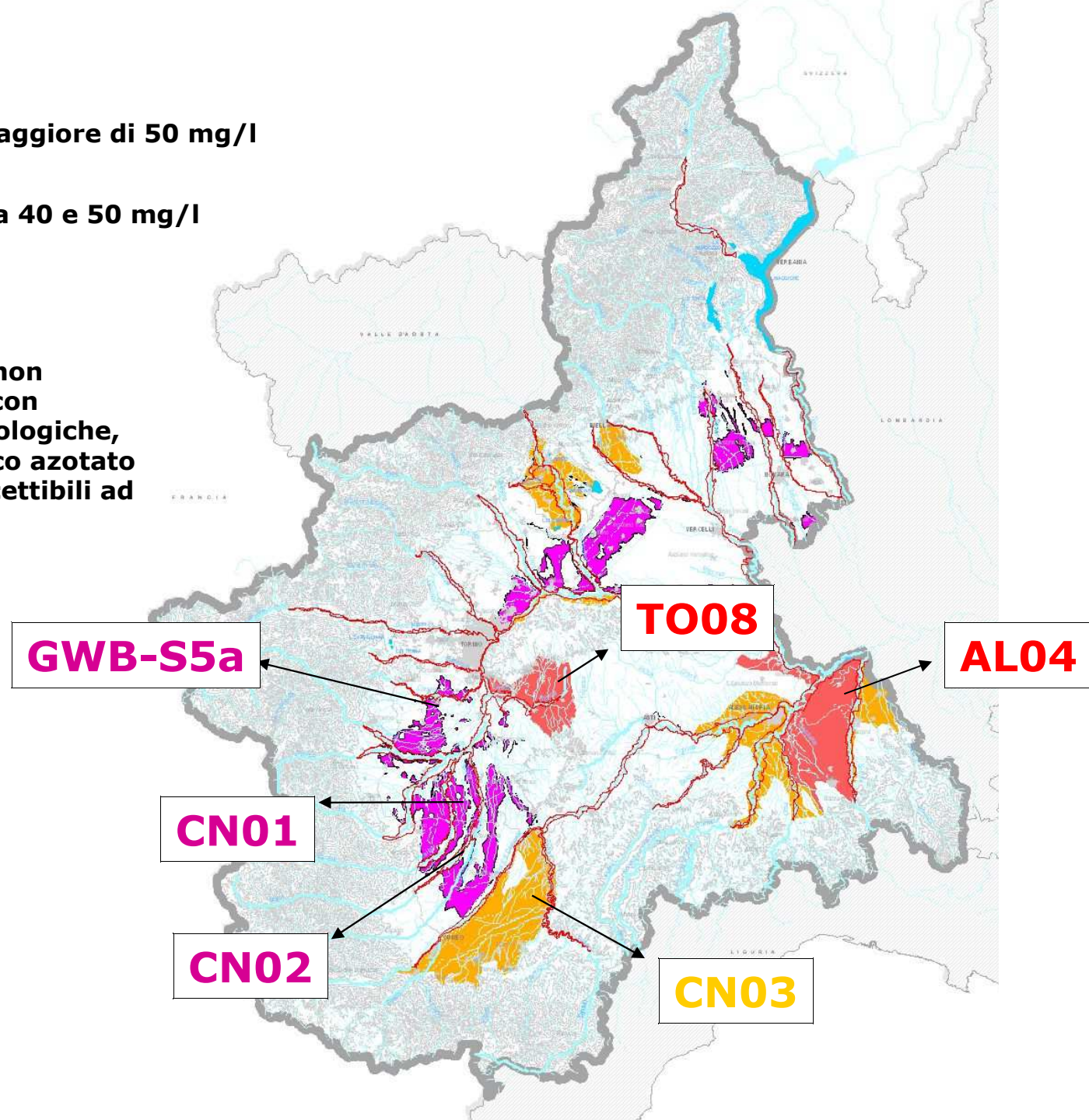
R.R. 9R/2002

 Zone vulnerate
LV1 – media Nitrati maggiore di 50 mg/l

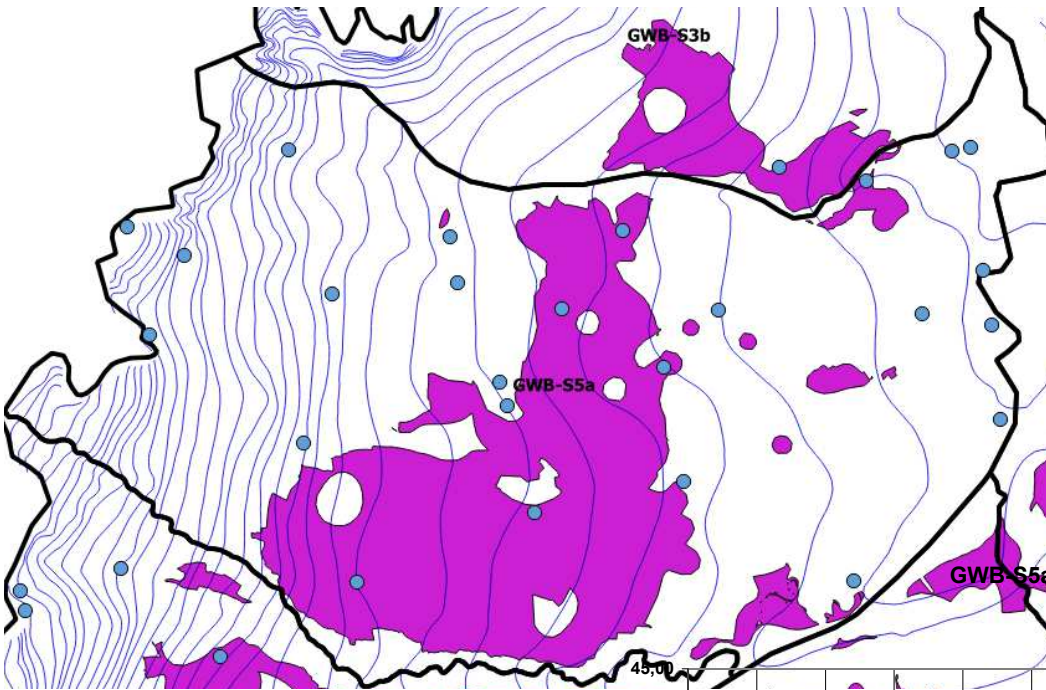
 Zone vulnerate
LV2 – media Nitrati tra 40 e 50 mg/l

R.R. 12R/2007

 Zone vulnerabili cioè non ancora vulnerate ma con caratteristiche idrogeologiche, pedologiche o di carico azotato tali da essere più suscettibili ad essere vulnerate

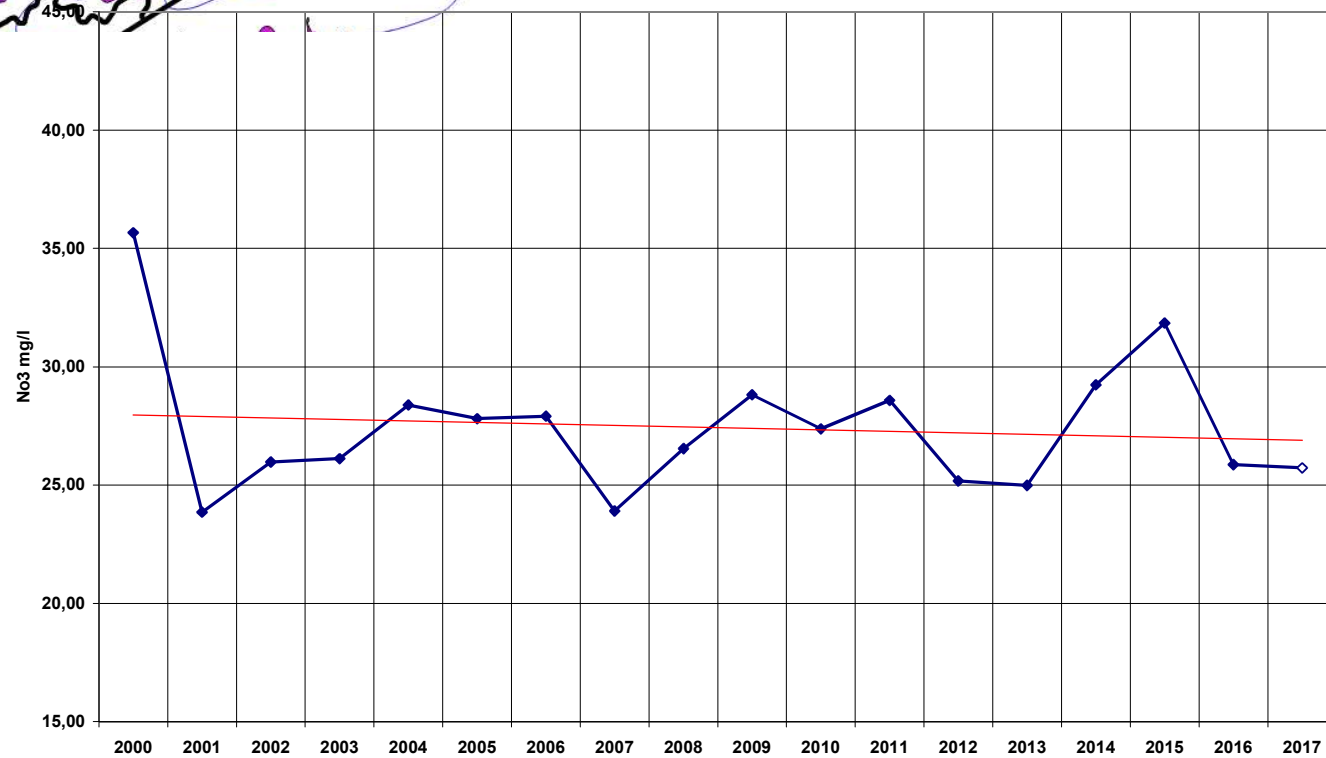


GWB-S5a – Pianura pinerolese tra Chisola e Chisone-Pellice
























GWB-S5a - Pianura Pinerolese tra Chisola Chisone-Pellice

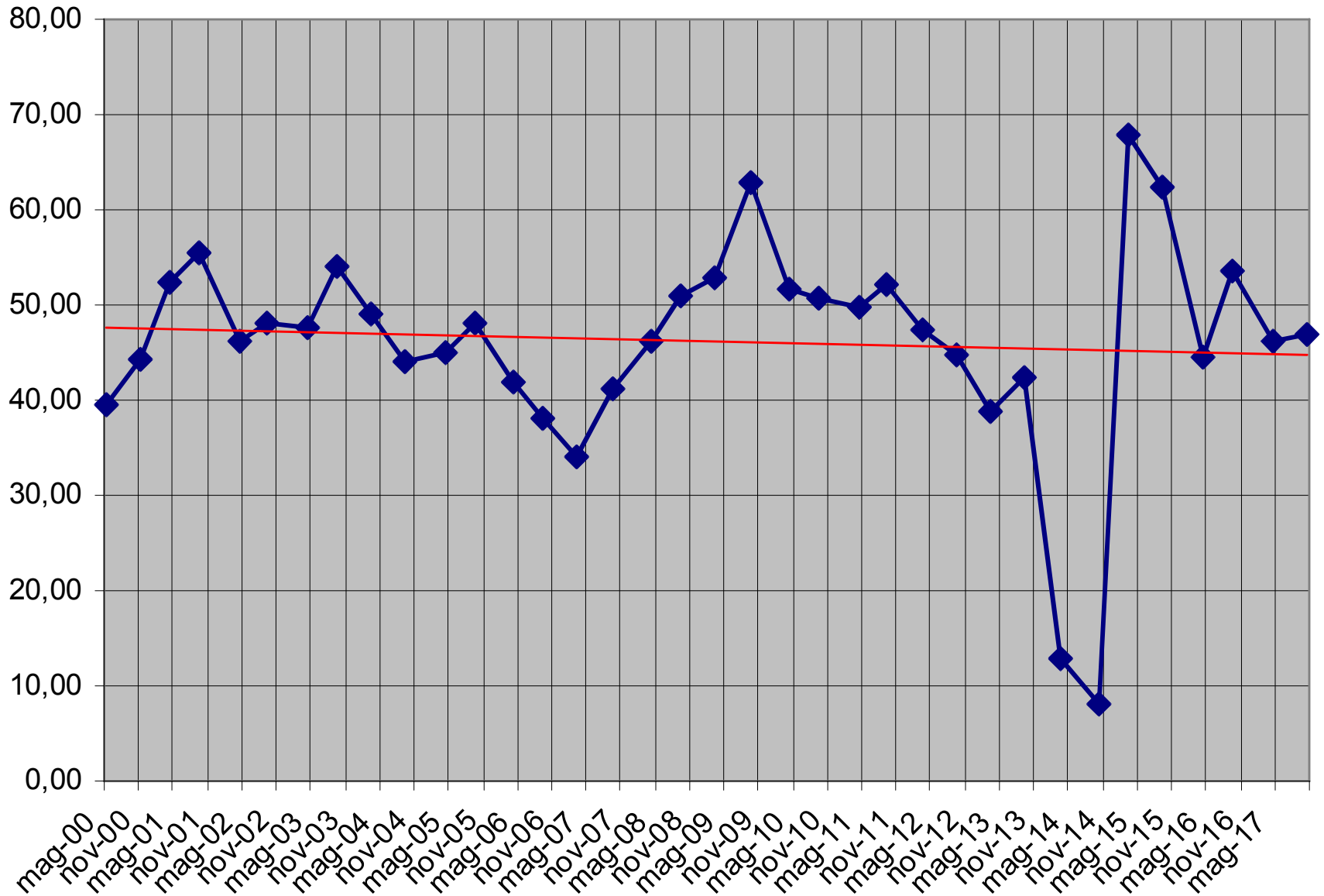
—●— media NO3 — Lineare (media NO3)



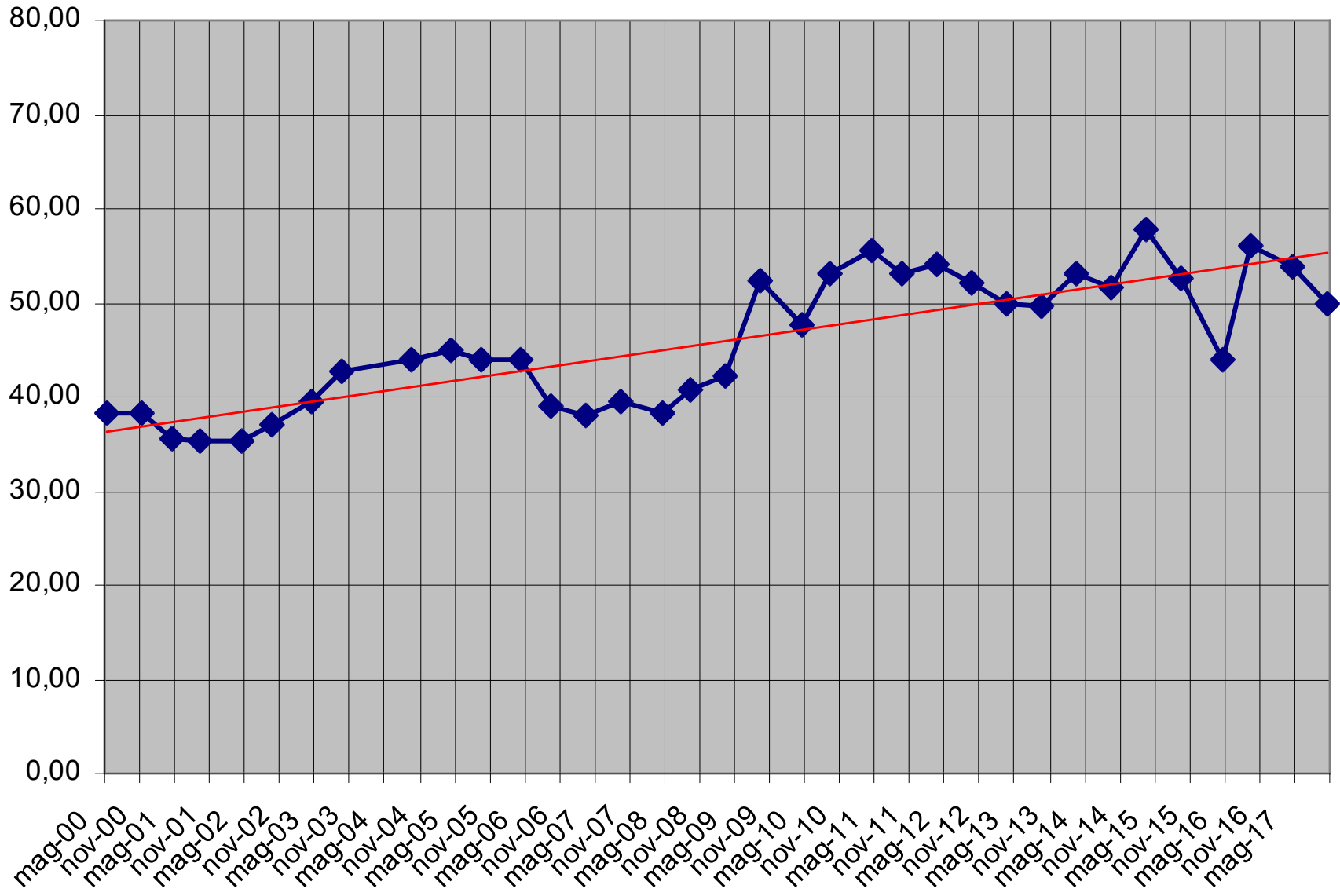
Corso di laurea in Scienze Agrarie
Esercitazioni interdisciplinari 2° livello anno accademico 2015-2016

POZZO	Caratteristiche del pozzo	Gestione delle strutture zootecniche dell'intorno del pozzo	Gestione del buffer di 200 m dal pozzo
Airasca 3			
Airasca 4			
Pinerolo 3			
Osasco 1			
Scalenghe P17			
Frossasco 2			
Piscina 1			

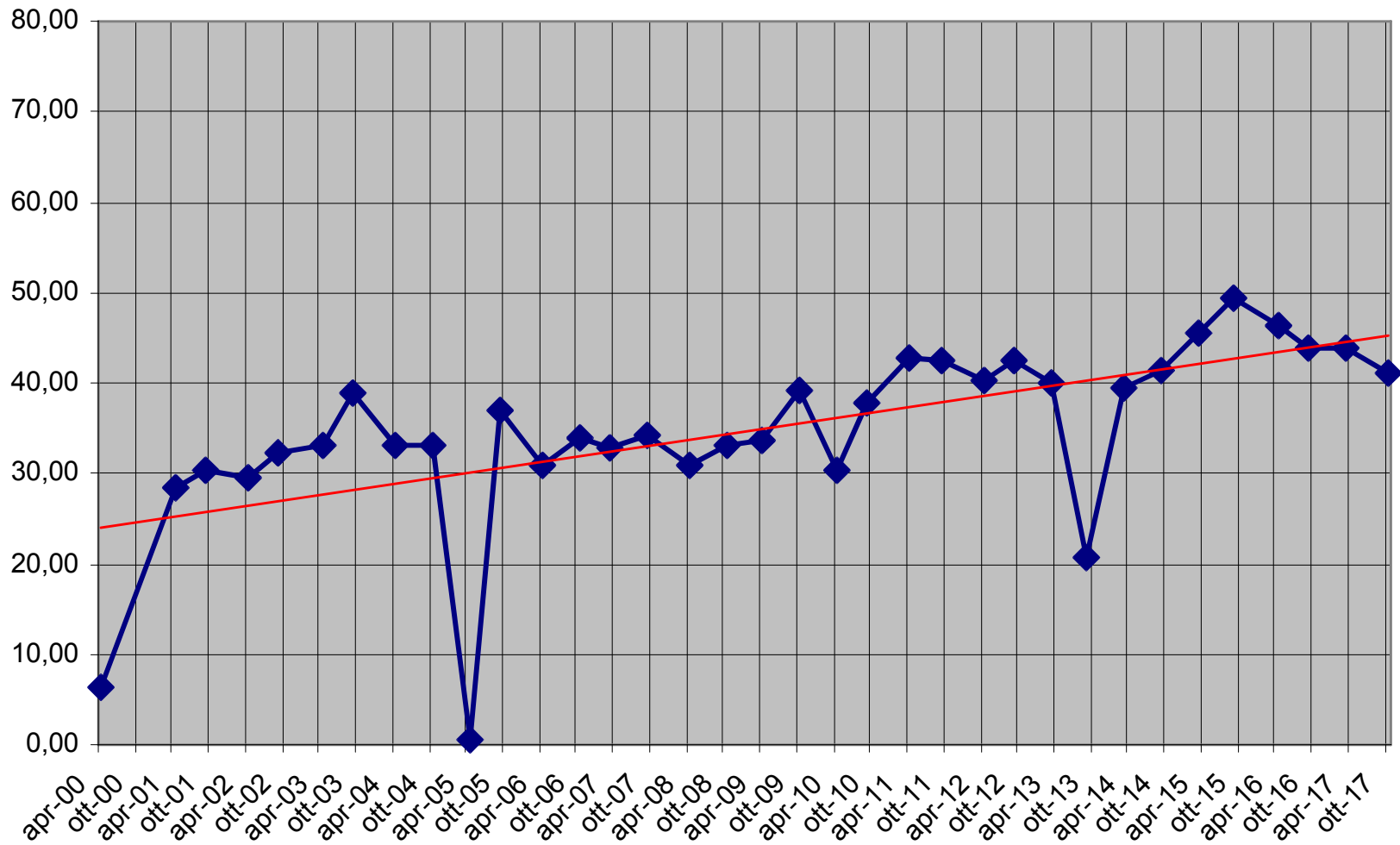
Airasca 3 - andamento Nitrati (media periodo 46,15 mg/l)



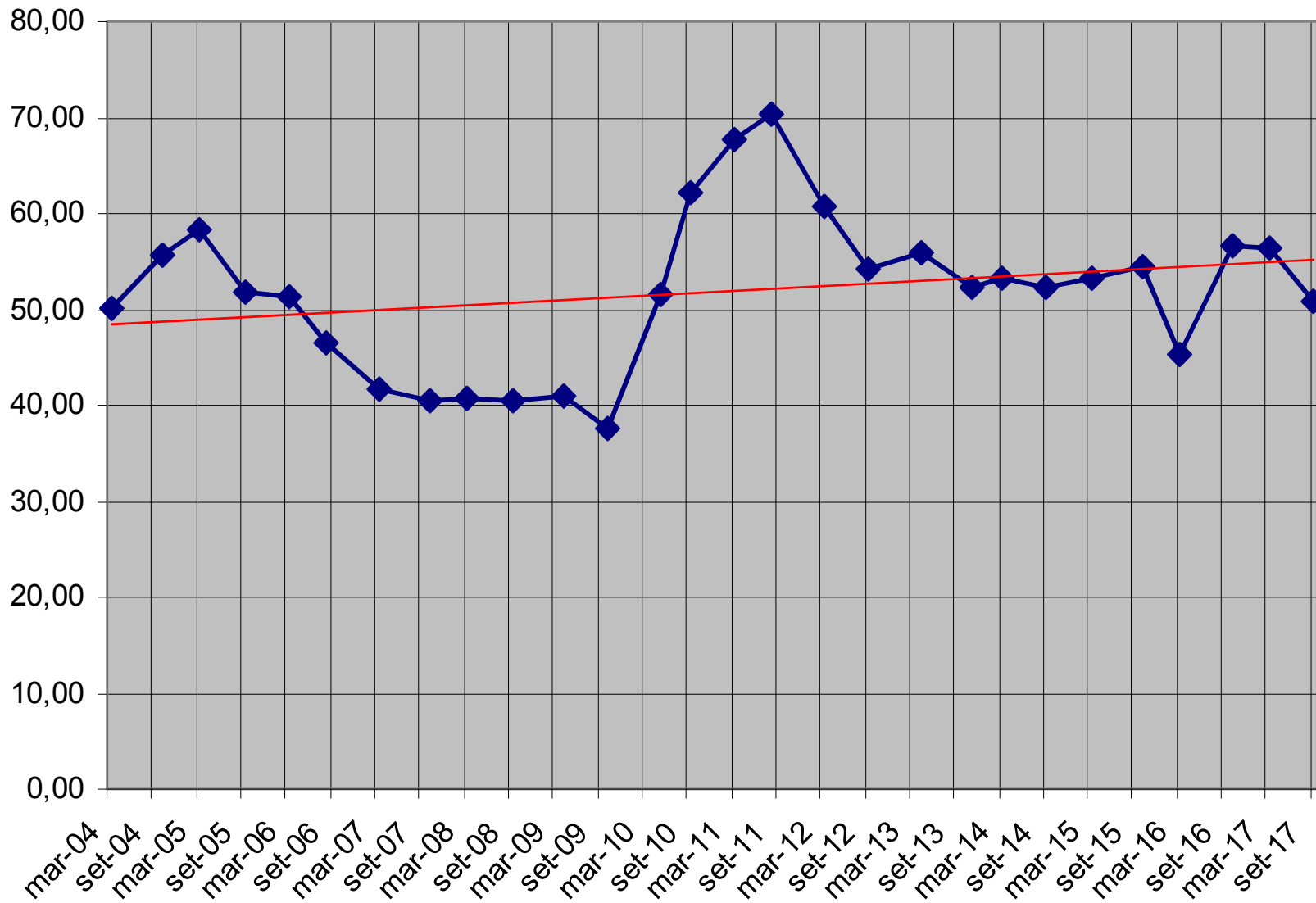
Airasca 4 - andamento Nitrati (media periodo 45,78 mg/l)



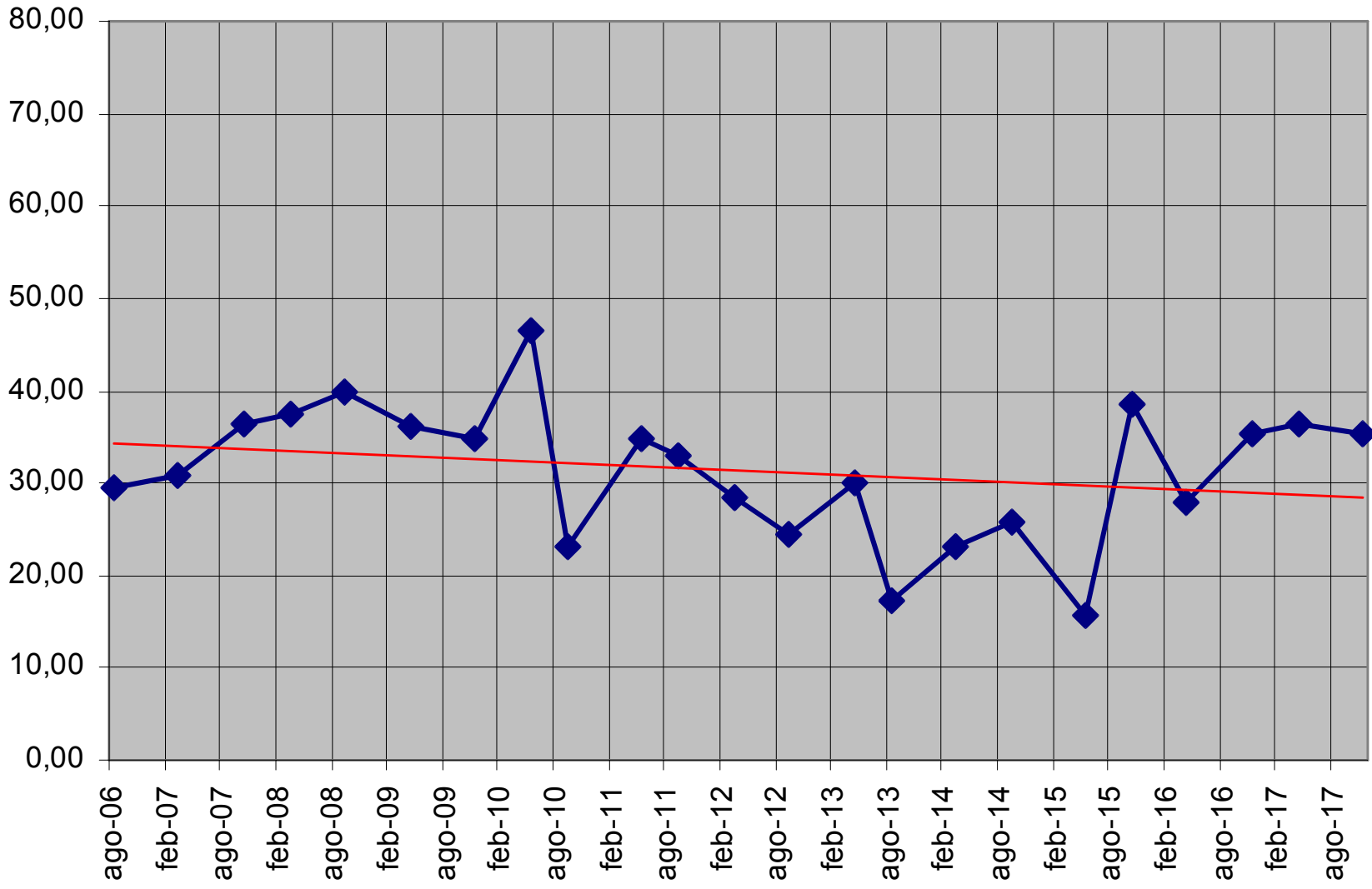
Scalenghe 5 - andamento Nitrati (media periodo 34,83 mg/l)



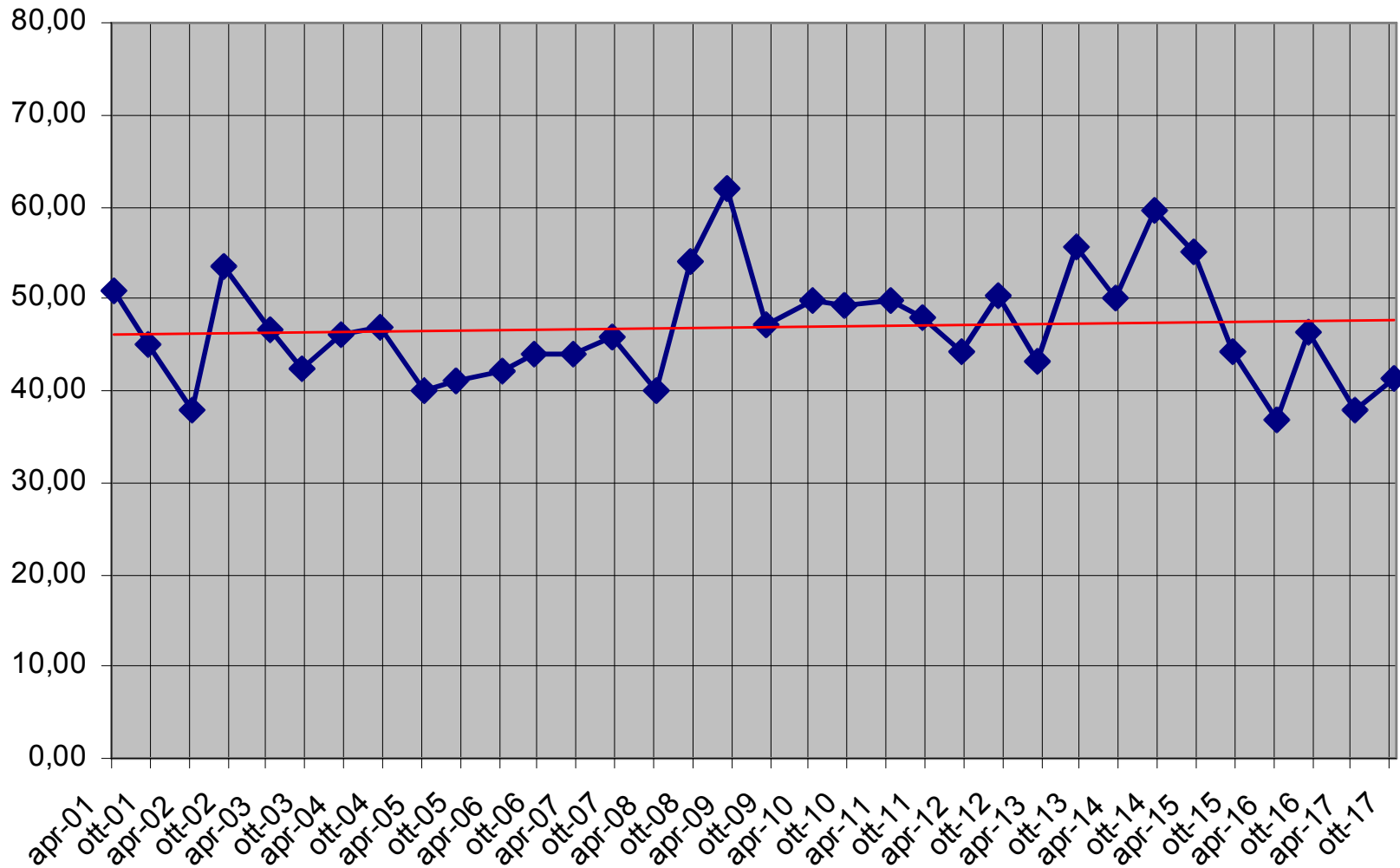
Scalenghe P17 - andamento Nitrati (media periodo 51,88 mg/l)



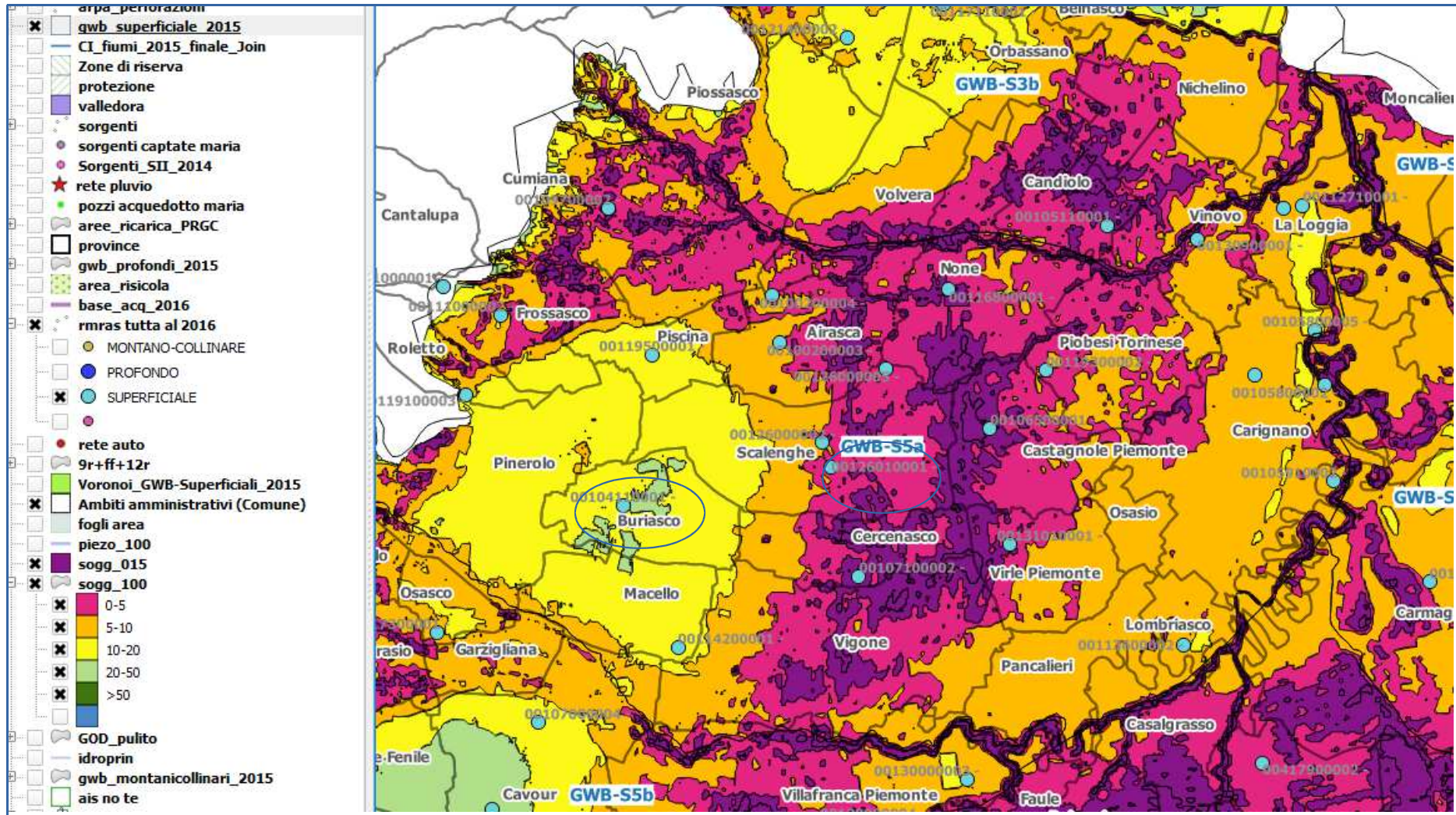
Buriasco P24 - andamento Nitrati (media periodo 31,33 mg/l)



Piscina 1 - andamento Nitrati (media periodo 46,78 mg/l)



Carta della soggiacenza della falda superficiale- scala 1:100.000 (rilievo di luglio 2002)



Dettaglio area oggetto di approfondimento

