

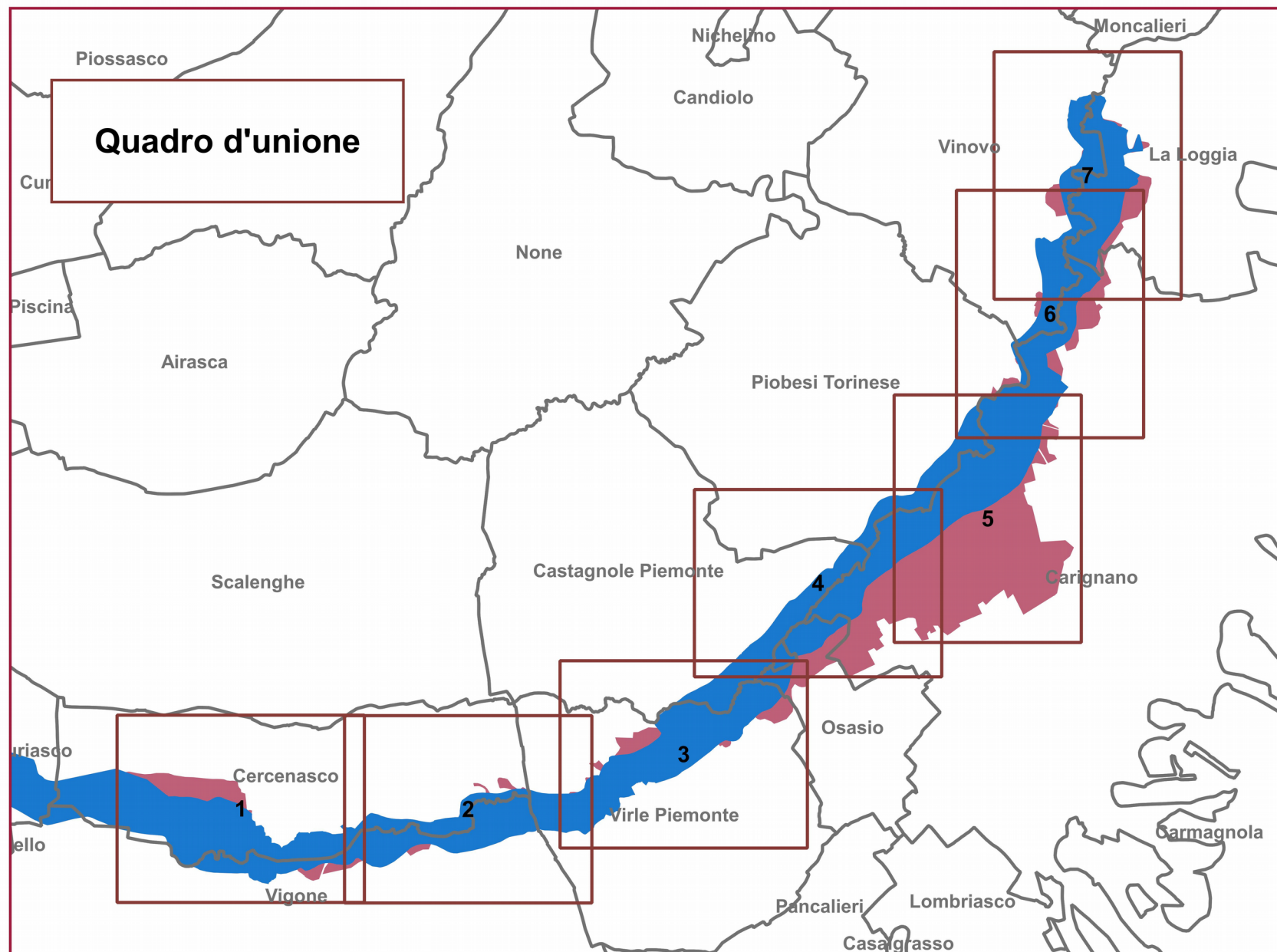


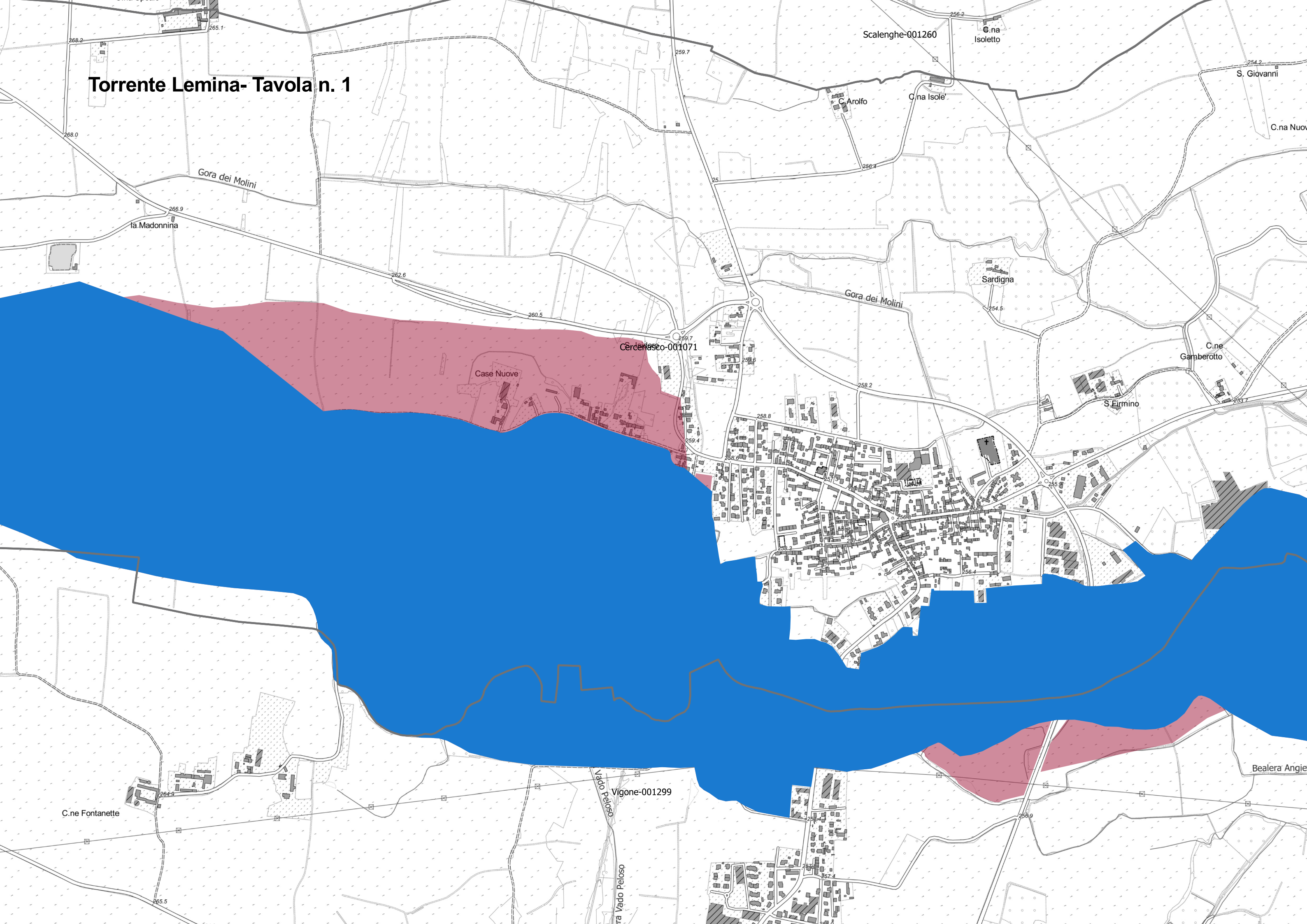
## Torrente Lemina - Confronto tra gli scenari di piena 'M' del PGRA e gli ampliamenti proposti a seguito dell'evento del 2016

### Legenda

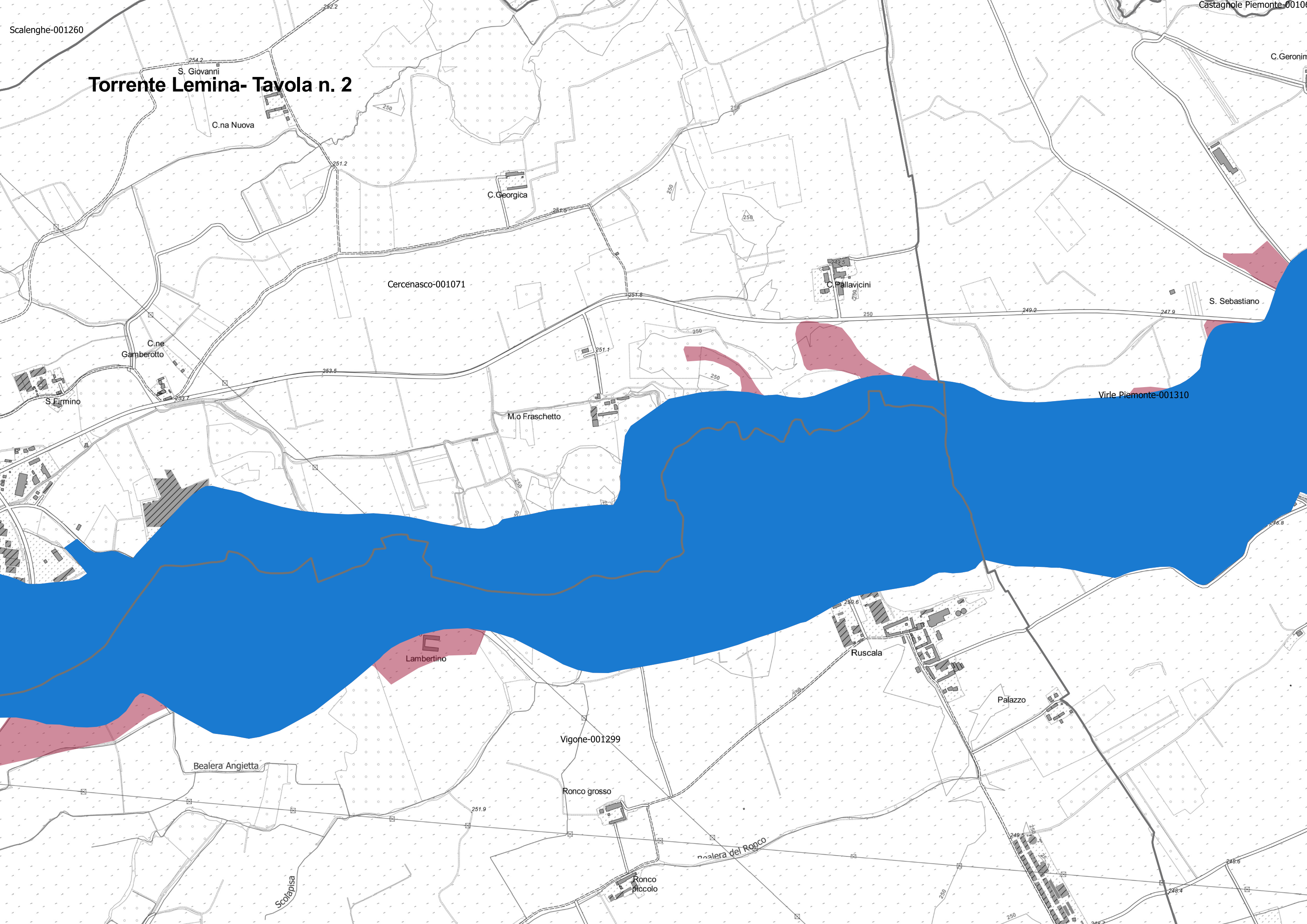
-  Scenario 'M' delle mappe di pericolosità del PGRA
-  Ampliamenti dello scenario 'M' in seguito all'evento del 2016



# Torrente Lemina- Tavola n. 1



# Torrente Lemina- Tavola n. 2



S. Giovanni

C.na Nuova

C.Georgica

Cercenasco-001071

C.Pallavicini

S. Sebastiano

Virle Piemonte-001310

M.o Fraschetto

Lambertino

Ruscala

Palazzo

Vigone-001299

Ronco grosso

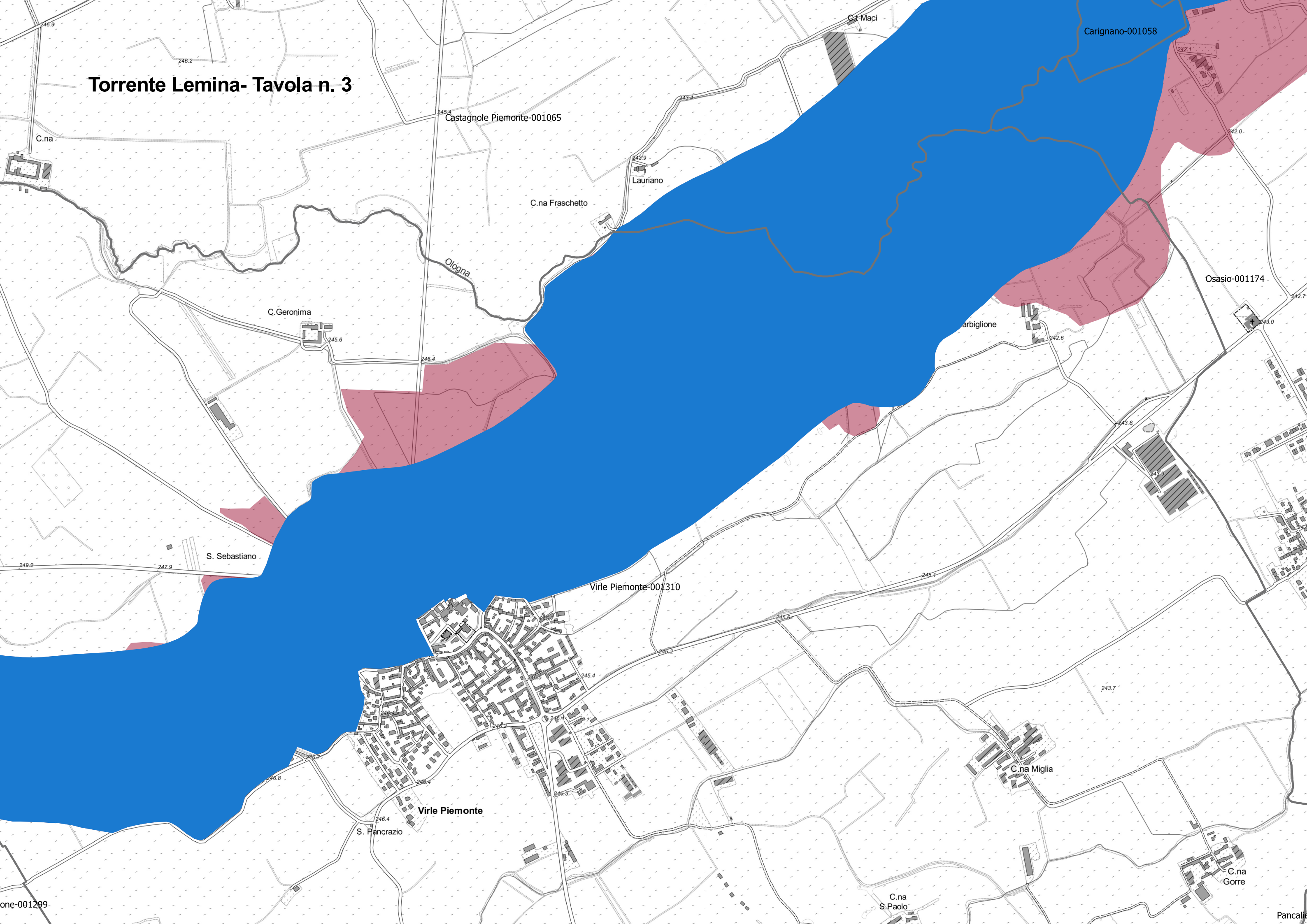
Ronco piccolo

Bealera Angietta

Bealera del Ronco

Scotapisa

# Torrente Lemina- Tavola n. 3



Castagnole Piemonte-001065

C.na Frascetto

Lauriano

Ologna

C. Geronima

Carbiglione

Osasio-001174

S. Sebastiano

Virle Piemonte-001310

Virle Piemonte

S. Pancrazio

C.na Miglia

C.na S. Paolo

C.na Gorre

Carignano-001058

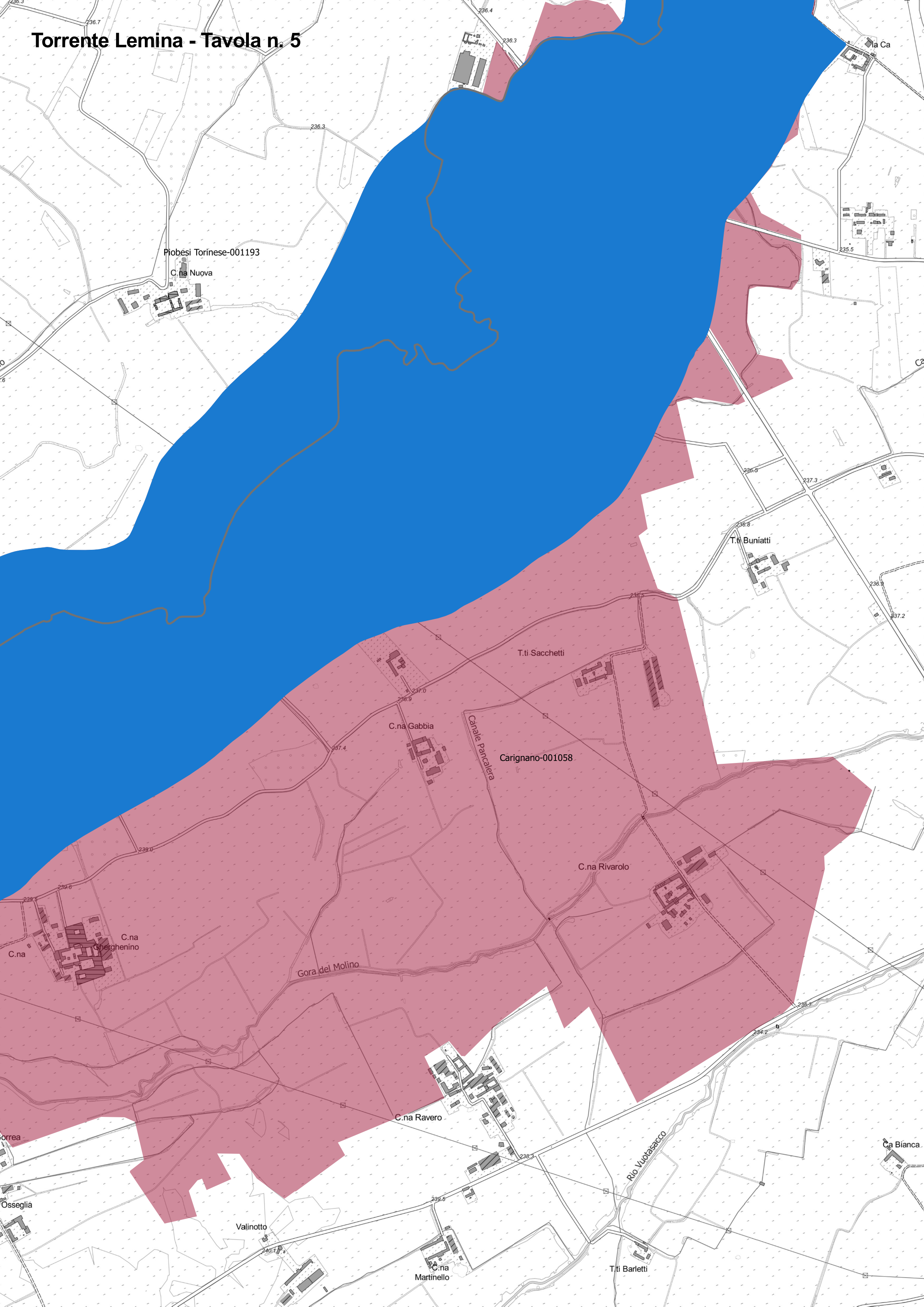
C.na

one-001299

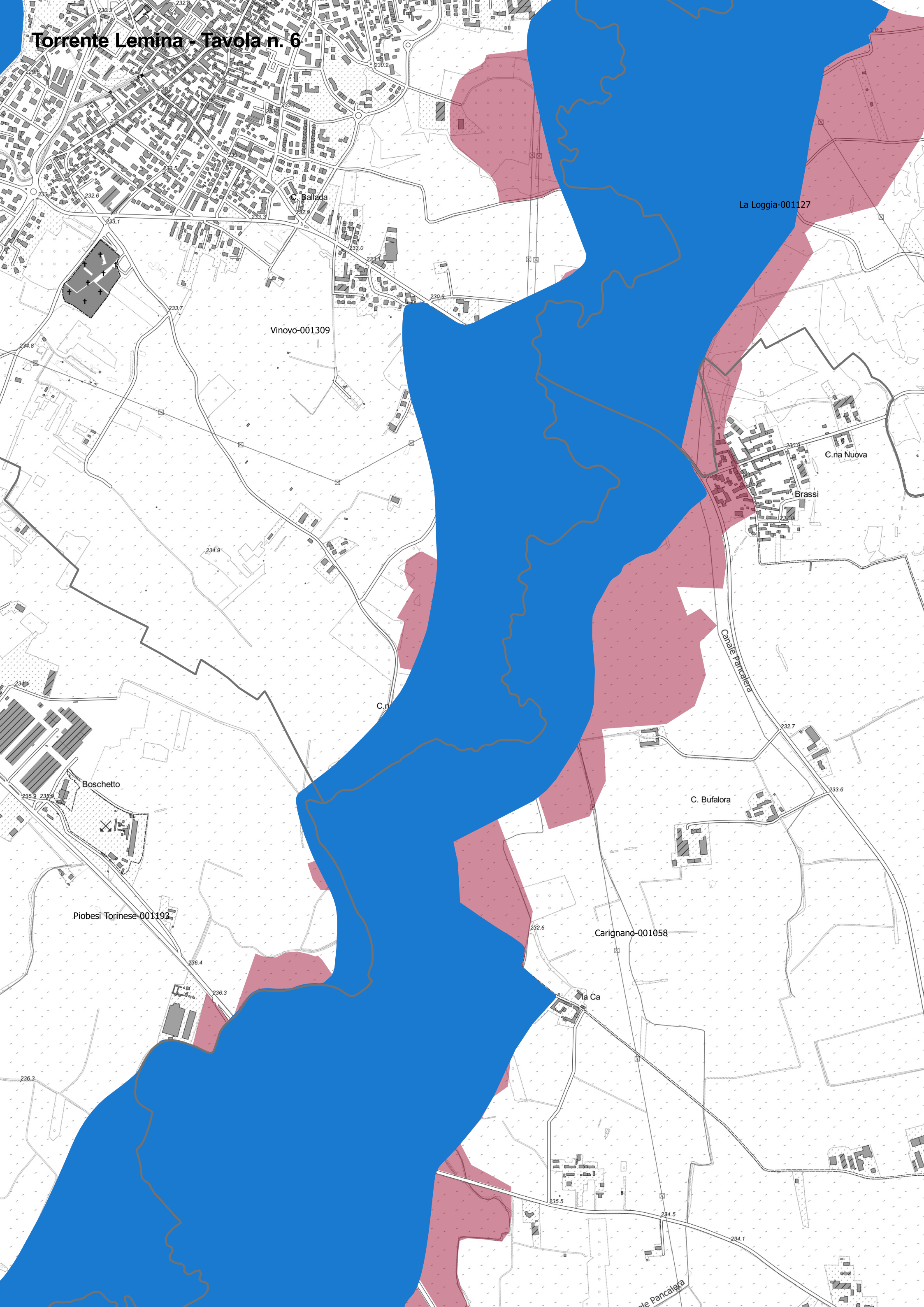
Pancal



# Torrente Lemina - Tavola n. 5



# Torrente Lemina - Tavola n. 6



Ballada

La Loggia-001127

Vinovo-001309

C.na Nuova

Brassi

C.n

C. Bufalora

Carignano-001058

la Ca

Boschetto

Piobesi Torinese-001192

le Pancalega

Canale Pancalega

230.3

232.5

230.2

233.5

232.6

232.6

233.1

233.3

232.1

233.0

233.7

230.9

234.8

233.7

234.9

234.5

235.9

235.9

236.4

236.3

236.3

232.6

232.7

233.6

235.5

234.5

234.1

# Torrente Lemina - Tavola n. 7

Moncalieri-001156

T.ti Cagliari

O.se Galli

Via Gall

Vinovo

Vinovo-001309

La Loggia-001127

C. Ballada

C.na Nuova

Brassi

Carignano-001058

Canale P

